



Notice of Project: Phillmore Bridge Deck Replacement

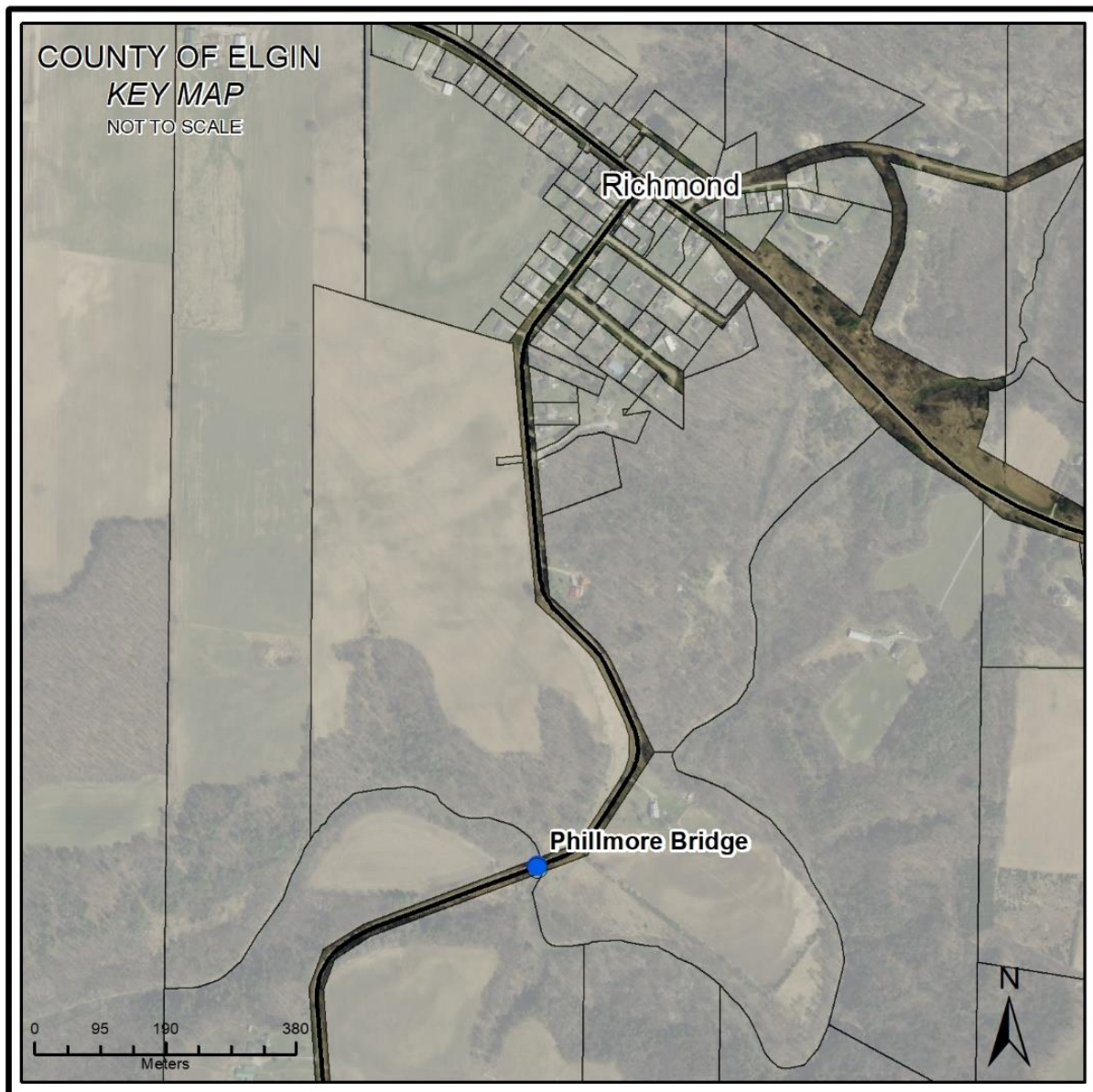
September 28th, 2021

Dear Property Owner/Resident/Merchant,

The County of Elgin is planning to replace the Phillmore Bridge deck located on Richmond Road (CR 43) south of the Hamlet of Richmond and approximately one kilometer south of Heritage Line (CR 38). This letter provides you with information about the project and includes a link to the project website (<https://www.elgincounty.ca/phillmore-bridge/>).

Project Location

The map below shows the project location.





Proposed Work Details

The existing Phillmore Bridge was constructed in 1992, is a single span half through steel truss (also known as a steel pony truss) bridge with a span of 40m and overall deck width of 9m. Originally, the steel pony truss bridge had a timber deck which was replaced with a steel bar grating deck in 2016. In order to improve the riding surface for all vehicles and road users, this project will entail replacing the existing steel bar grating deck with composite deck panels and surfaced with asphalt. The bridge truss's structural members may also require strengthening in order to accommodate the new deck. This design work is currently underway.

Proposed Project Timeline

- Pre-Construction Public Information Centre: Fall 2021*
- Design Finalization: December 2021*
- Construction Start: Early Spring 2022*
- Estimated Completion: Fall 2022*

* Please note that the timelines are approximate and will vary depending on weather and other factors.

Pre-Construction Survey

In the coming months, County staff and consultants will be at the bridge site to perform survey and investigation work to support the design of the new bridge deck. You may also see lines painted on the road; this is how we identify existing underground pipes and infrastructure.

Transportation Impacts

The Phillmore Bridge Deck Replacement Project will necessitate the bridge and Richmond Road in the vicinity of the bridge to be closed for approximately 12 weeks. During this time a construction detour will be established utilizing Heritage Line, Plank Road and Calton Line.

Contact Information

The Design Team is committed to keeping you informed during the project. Please reach out to the project Design Team at any time.

County Project Manager	Brian Lima, P.Eng. (519) 631-1460, ext. 117, blima@elgin.ca
General Inquiries	519-631-1460, engineering@elgin.ca
Website	https://www.elgincounty.ca/phillmore-bridge/

Project Updates

Visit the Project website (<https://www.elgincounty.ca/phillmore-bridge/>) to learn more about your construction project, find links to notices and other related content. More information will be uploaded to this website as the project progresses.

Thank you in advance for your cooperation. We look forward to completing this important infrastructure upgrade in your area as we work towards building a more sustainable community.

Sincerely,

Brian Lima, P.Eng.
Director of Engineering Services

- Cc: *Sent via email*
- Tom Marks – Warden, County of Elgin
 - Dave Mennill – Deputy Warden, County of Elgin
 - Ed Ketchabaw - Mayor, Municipality of Bayham
 - Susan Chilcott – Ward 3 Councillor, Municipality of Bayham
 - Julie Gonyou – CAO/Clerk, County of Elgin
 - Thomas Thayer – CAO/Clerk, Municipality of Bayham
 - Steve Adams – Manager of Public Works, Municipality of Bayham