

CSWB

AYLMER-ELGIN-ST.THOMAS



Advisory Committee Data Walk

October 7, 2020

Welcome and Introductions



Developing the CSWB Plan

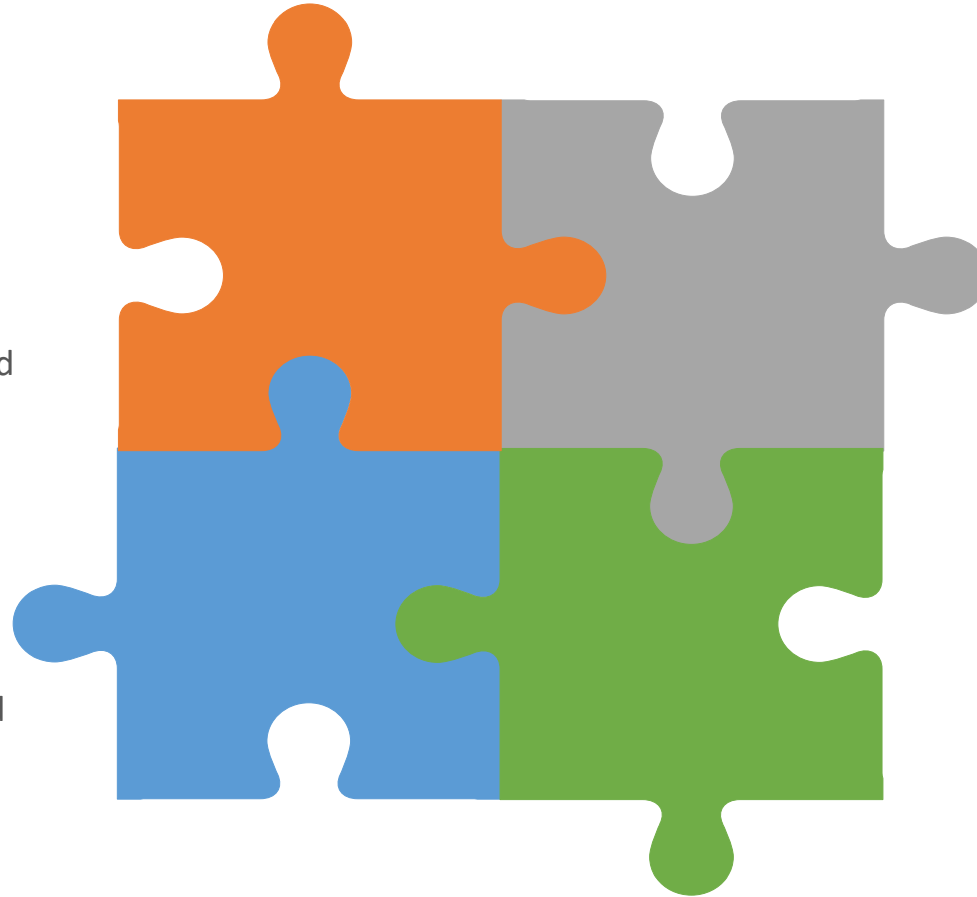
Data and Local Research

What does the data and local research tell us about our communities and our risk and protective factors?

What priorities have been identified and what strategies/initiatives are currently underway?

Local Asset Mapping

What priorities have been identified and what strategies/initiatives are currently underway?



Advisory Committee

What are the top issues/challenges and/or risks in our communities?

What strategies/initiatives are currently underway?

What else should we be doing?

General Public

What are the public's perceptions of community safety and well-being?

What are their top priorities?

Process to Date

- CSWB website (<http://www.elgincounty.ca/cswb/>)
- Online video introduction
- Data Package, July 2020
- Inventory of Existing Planning Tables (n=19)
- Advisory Committee Initial Survey (n=38, 18 sectors)
- Online Discussion Forum (36 members)
- General Public Survey (n=356)

Data Walk

- Review data in key areas
- Each of us brings a unique and valued perspective
- Fill in pieces of the puzzle that are missing with data alone



Focus of the Data Walk

Top 4 Issues from the Community Partner Survey

1. Housing and Homelessness (57.9% of respondents, 10 sectors)
2. Mental Health Services/Supports (55.3% of respondents, 11 sectors)
3. Substance Use, Addictions and Related Services/Supports (47.4% of respondents, 9 sectors)
4. Poverty and Income Security (31.6% of respondents, 8 sectors)

Data Walk Directions

- You will work with a small group in a breakout room
- A slide with the data will be shared with you. You can also review the data in the data package
- “Stations” of the 4 different areas will be rotated into your breakout room
- Your group will have 20 minutes at each station
- You will then have another station come into your breakout room
- While at each station you should look at the slide and handout in the data package and discuss them with your group
- You can also write down your thoughts on your handout if you'd like

Reflection and Discussion Questions

For each station reflect on and discuss the following questions:

1. What are you noticing? What surprises you about the information? Anything?
2. What else do we know about the issues in this area?
 - What are the main sub-issues/challenges in this area?
 - Are certain geographic areas more of a concern?
 - Certain population groups?
 - Other overlapping issues? (i.e. poverty, transportation, access, internet, etc.)
3. What's already being done in our community to address issues in this area?
4. What questions do we have? What else do we need to know?
5. What should be the specific focus of this area in the Community Safety and Well-Being Plan?

Housing and Homelessness

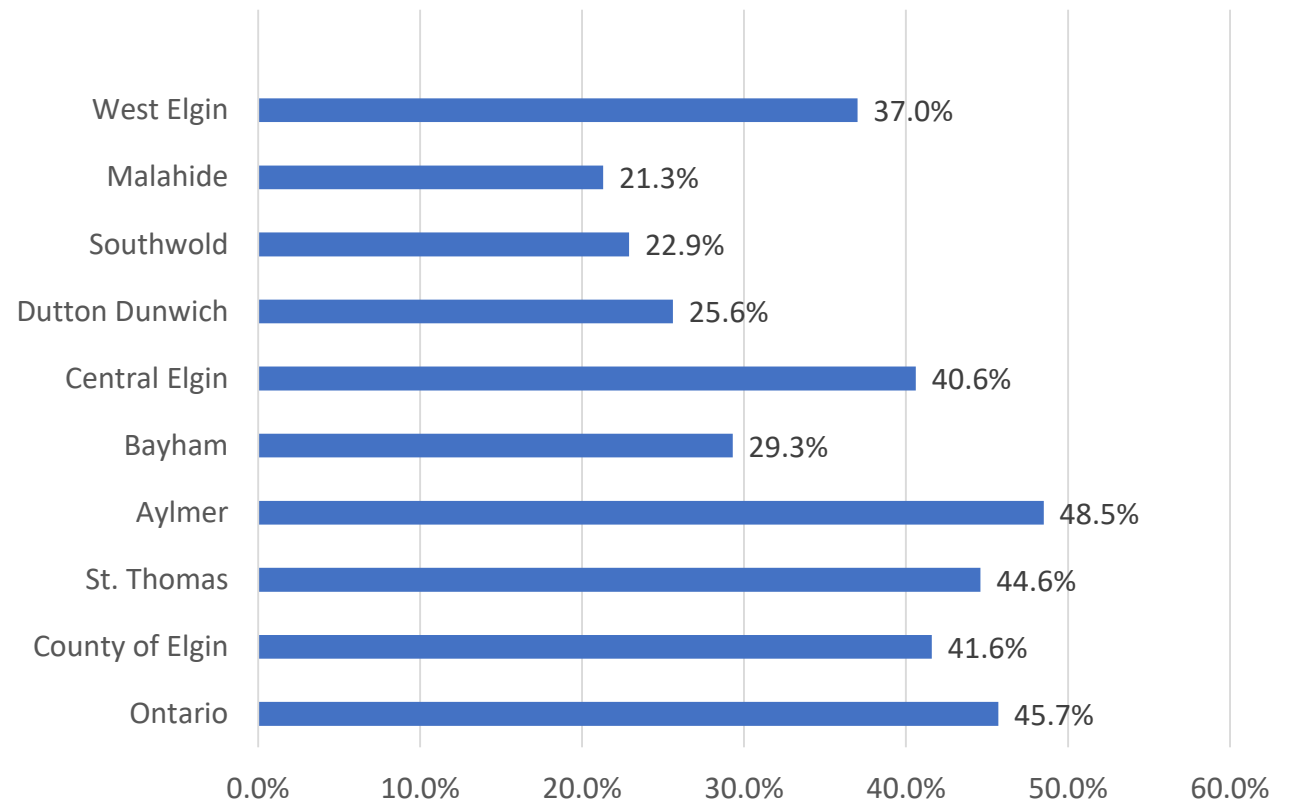
(Data Package – page 10 and pages 67-77)

159 people living with homelessness

776 people on the social housing waitlist

Average **5.5** years on the waitlist (range from 3 to 9 years)

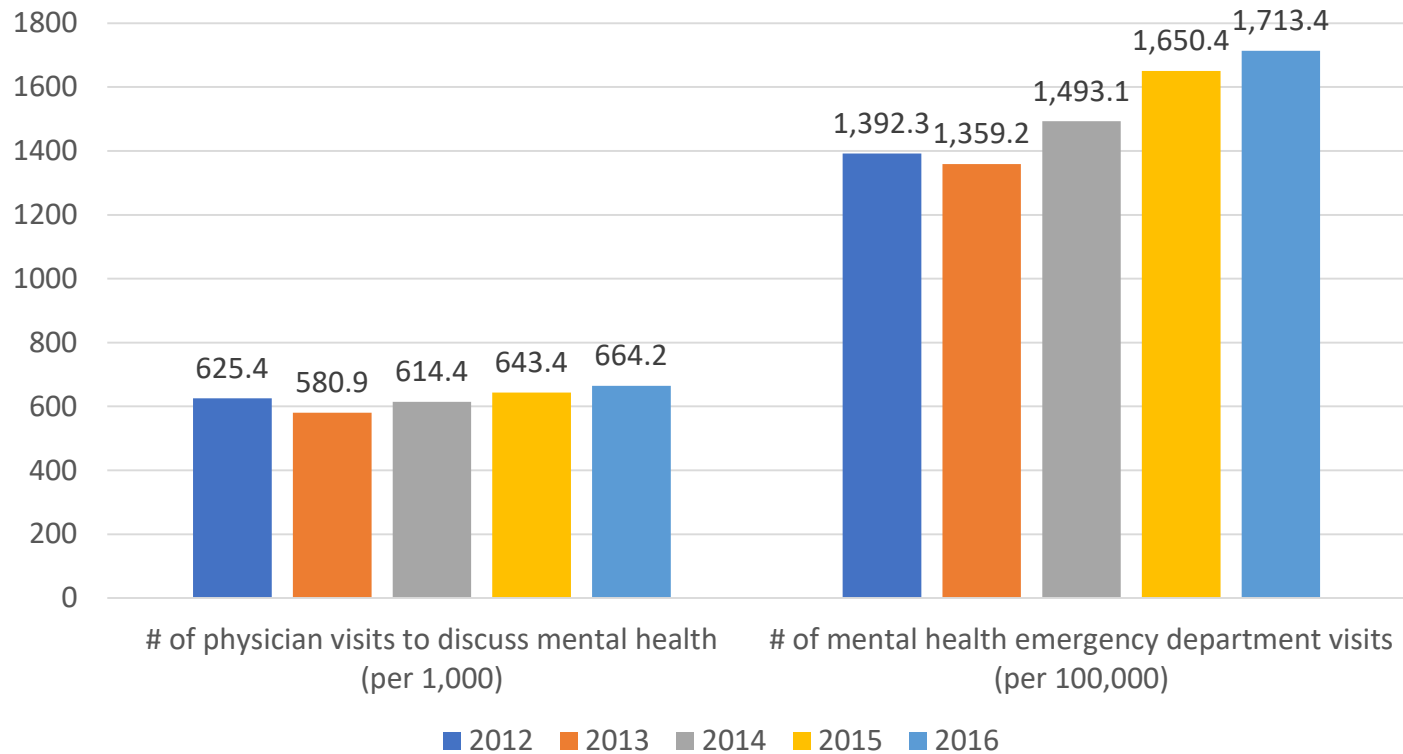
% of tenant households with unaffordable housing (2016)



Housing affordability is a top problem for renters, with almost 42% of renters with shelter costs totaling 30% or more of their income

Mental Health and Well-Being

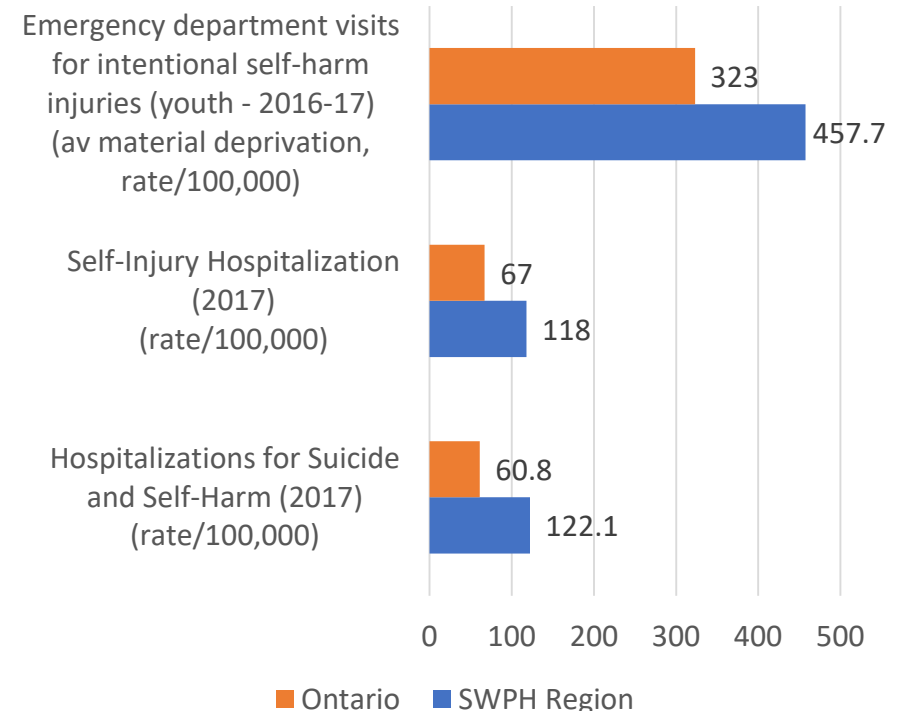
(Data Package – page 5 and pages 34-41)



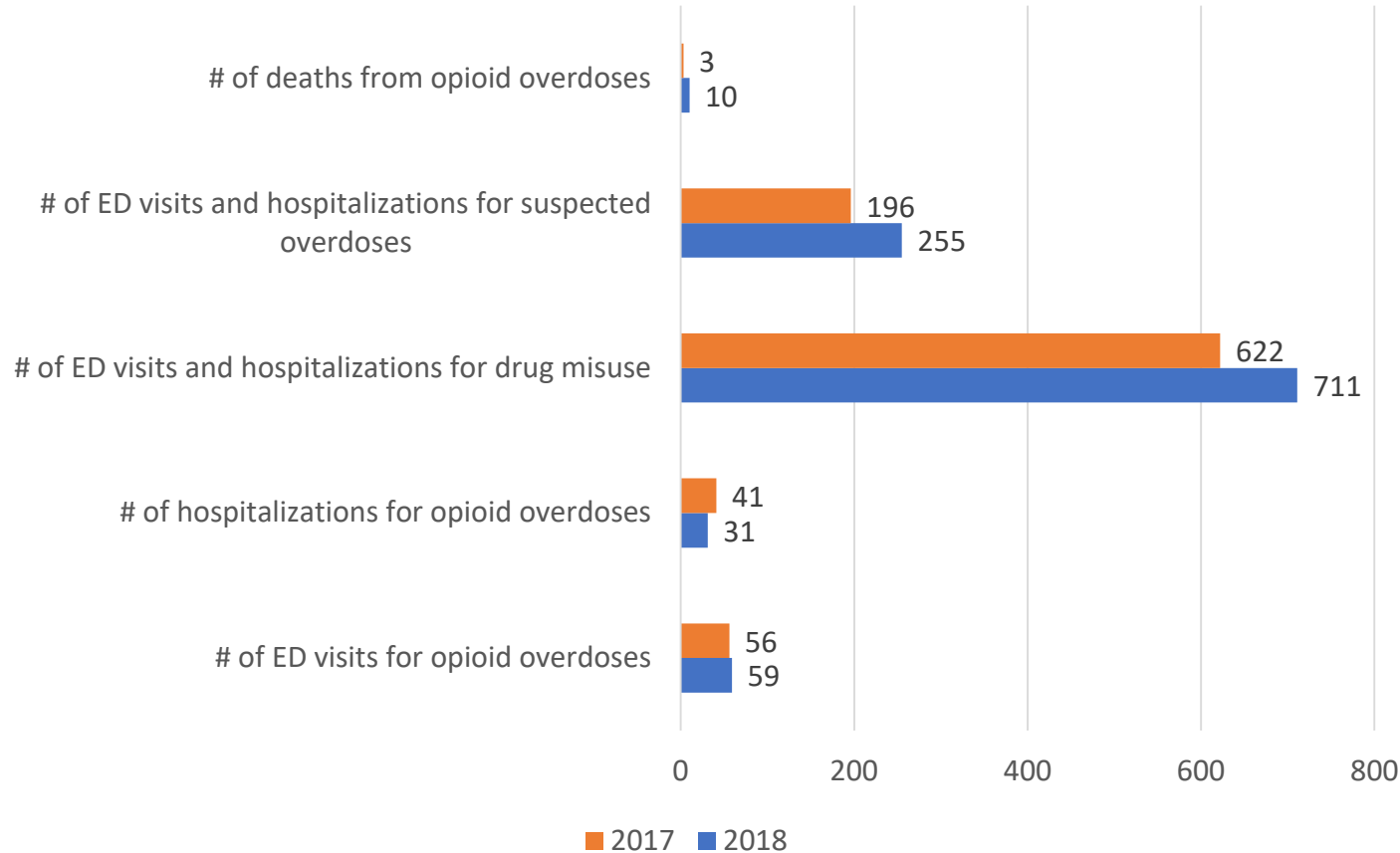
The number of mental health visits to physicians and emergency departments increased from 2012 to 2016

- St. Thomas, West Elgin, and Aylmer have the highest rates of mental health emergency department visits in the region
- St. Thomas, West Elgin, and Southwold have the highest rates of hospitalizations for mental health in the region

Suicide, self-harm, and self-injury rates are higher in the region compared to Ontario, and are higher in 2016/2017 compared to 2013/2014. Rates are high among youth



Addictions and Substance Use (Data Package – page 14 and pages 90-92)

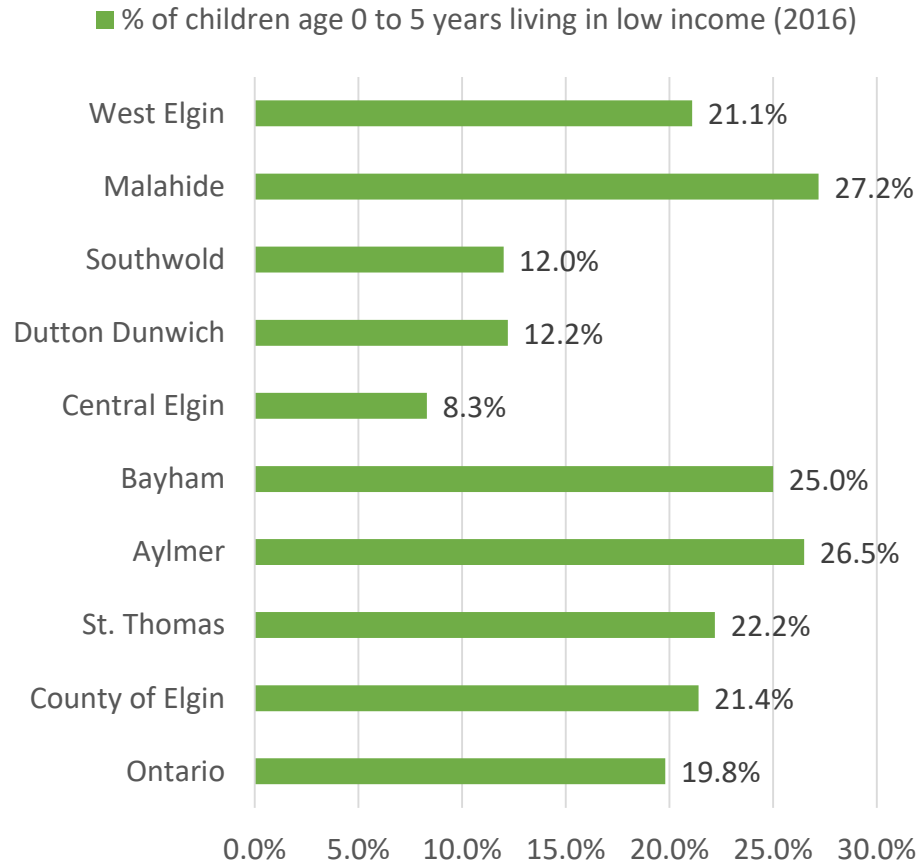


The # of naloxone kits distributed to individuals through pharmacies increased from **3,259** in 2018 to **12,821** in 2019

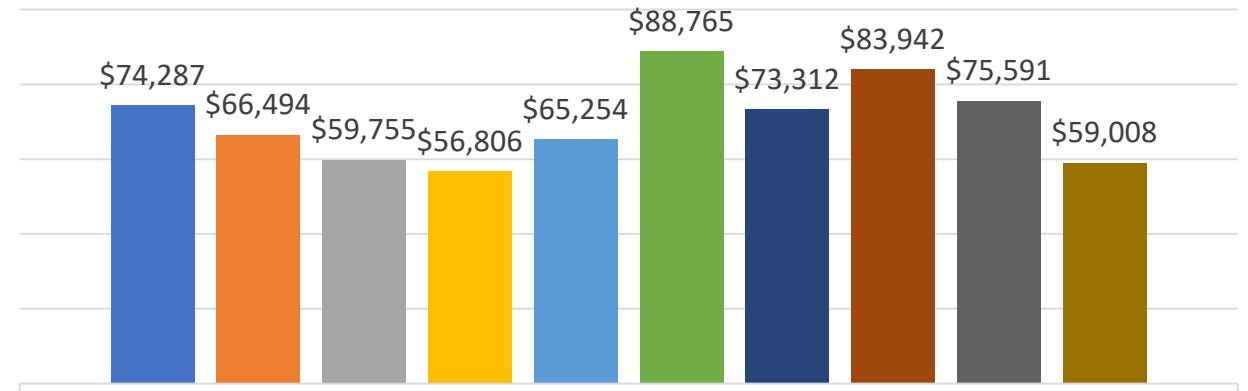
From 2017 to 2019, fentanyl consistently has been the top opioid directly contributing to deaths. In 2019, fentanyl and carfentanil were the number one opioids directly contributing to death. People who died were most likely to be male between the ages of 25 and 64, unemployed, to live in a private dwelling, and to be at home at the time of death.

Poverty

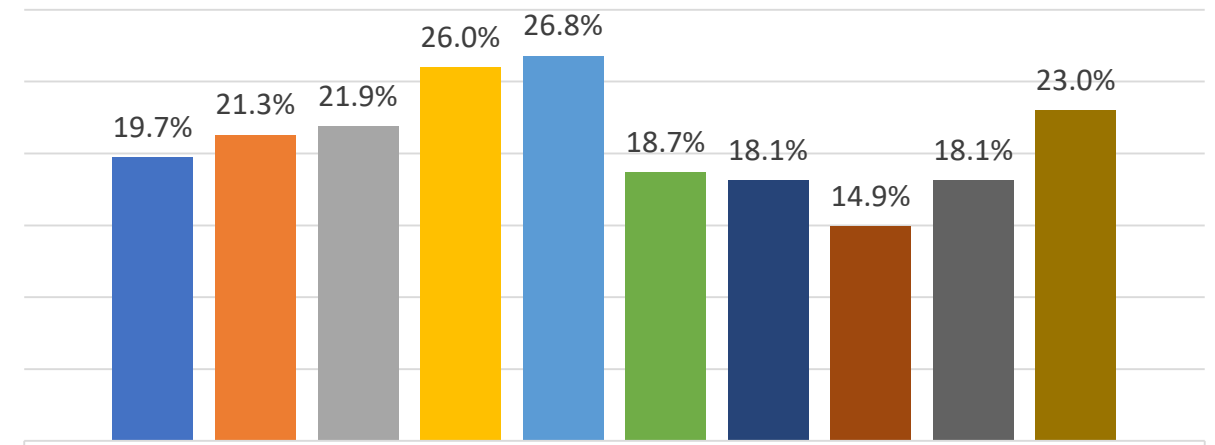
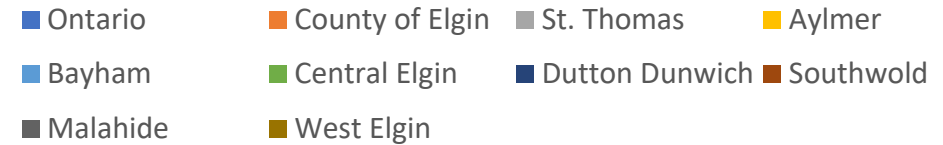
(Data Package – page 9 and pages 59-66)



Overall, low income rates in the region are comparable to Ontario, though this varies by age and by community. The highest poverty rate is seen among children age 0 to 5, with 21.4% living with low income



Median income (2016)



% not participating in the labour market (age 25 to 64)

The region's median household income is lower compared to Ontario, and more people between the ages of 25 and 64 are not participating in the labour market

Large Group Debrief

1. What are your overall reflections from the data walk?
2. What is one key takeaway?
3. What does this mean as we think about potential priority risks to include in the CSWB Plan?

Wrap Up and Next Steps

- Summary notes from this session
- Working session to review and interpret the responses to the general public survey
- Working session to draft the CSWB plan

