

1. Dr. E. W. Gustin's home and office, now 295 Talbot, c. 1890

The house was built c. 1870 and the bank building c. 1878. The bank is the site of the Art Centre today.

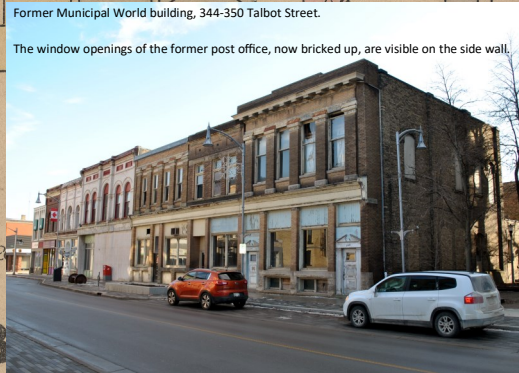


PEARL



Former Municipal World building, 344-350 Talbot Street.

The window openings of the former post office, now bricked up, are visible on the side wall.



Contemporary photographs are by Jan Row. Historic images are from the Elgin County Archives.

Red Numbers match the locations from which the historic photos were taken. The red arrow indicates the direction in which the camera was pointing.

EAST



St. Thomas Post Office, Talbot Street, and, to its right, the home of J. M. Green, c. 1875

These buildings were located approximately where the east end of Grand Central Place is today. In fact, the post office still there. It was incorporated into the block now at 344-350 Talbot around 1910 when a new facade joined it and two adjacent buildings together. This work was probably undertaken by the Municipal World Company. Owned by the Clerk of the County of Elgin, K. W. McKay, Municipal World printed forms used by municipalities such as assessment rolls and also published a periodical devoted to issues related to municipal administration and law. The magazine, still published, now occupies offices in Union.

John McNabb Green lived in the house on the right until the 1880s when it was relocated to 73 Metcalfe either by moving it intact or rebuilding it. Green, Kilpatrick's partner for about a year in 1877, was a contractor trained as an architect. He operated a large planning mill in later years and built many of the city's public buildings including city hall and Alma College, and a number of private homes. He built the Grand Central Hotel on the site of his former home.



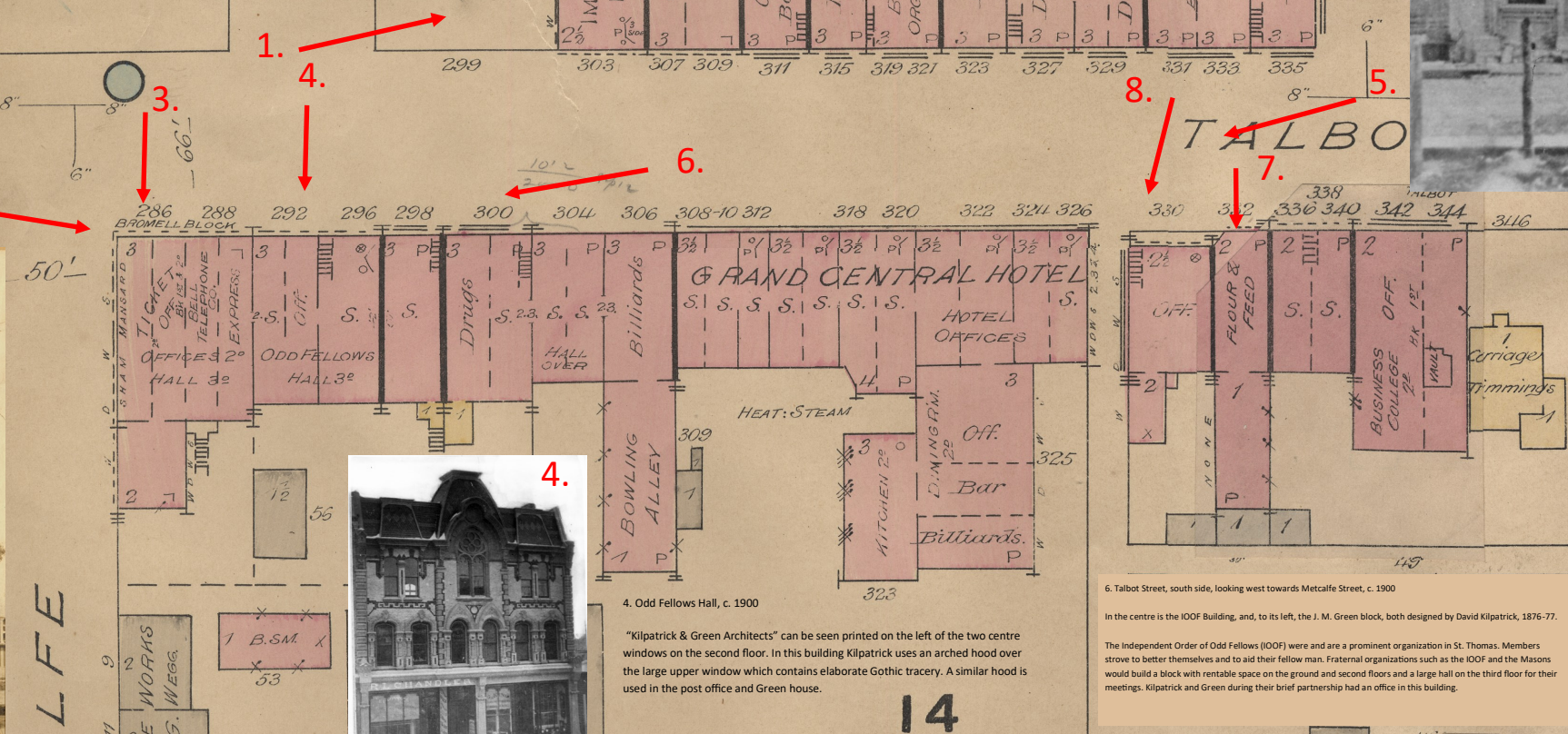
2. Blackmore's Hardware, southeast corner of Metcalfe and Talbot Streets, c. 1900

This block was built c. 1880 by J. M. Green, David Kilpatrick's one-time partner. The building matches one located today at 591 Talbot. The hall on the 3rd floor was home to the woodmen of the world, a fraternal organization.



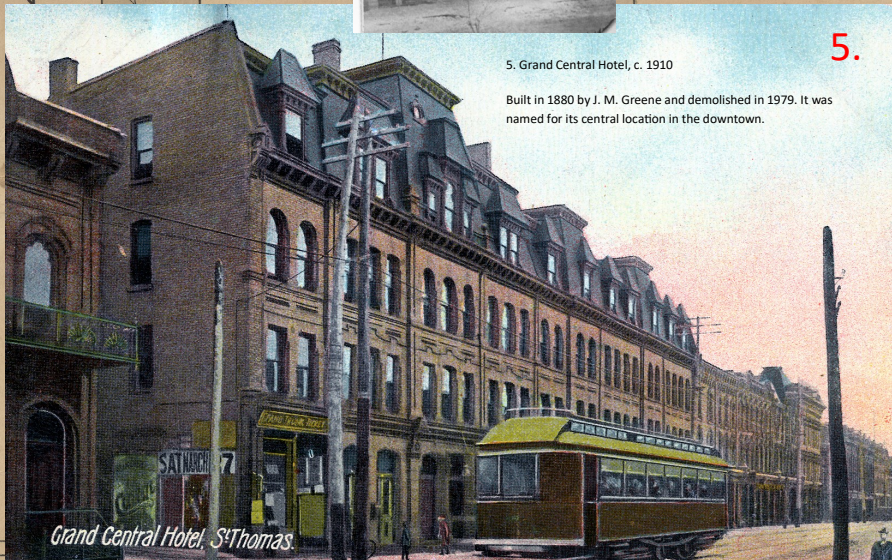
3. Southeast corner of Metcalfe and Talbot Streets, c. 1883

Then housing the Cyrus H. Hepinstall Jewelry store and George T. Claris, a private banker and the man who built the Opera House. The Molson's Bank at Pearl and Talbot is reflected in one of the windows.



4. Odd Fellows Hall, c. 1900

"Kilpatrick & Green Architects" can be seen printed on the left of the two centre windows on the second floor. In this building Kilpatrick uses an arched hood over the large upper window which contains elaborate Gothic tracery. A similar hood is used in the post office and Green house.



5. Grand Central Hotel, c. 1910

Built in 1880 by J. M. Greene and demolished in 1979. It was named for its central location in the downtown.



The Journal building and staff, 348 Talbot Street, c. 1890

The Journal was published as a weekly beginning in 1893 and then, after 1894, as a daily. The newspaper was here for a number of years before moving into its own building at Talbot and Metcalfe in 1891. The Municipal World moved to this building possibly because it had been a print shop. The building now 348 Talbot.