



ELGIN COUNTY
VILLAGE OF SPARTA ROAD RECONSTRUCTION 2019
PUBLIC INFORMATION CENTRE – FEBRUARY 21, 2019

1. SCOPE OF WORK

- New Storm Sewers and Catchbasins for Road Drainage
- Road Base Reconstruction
- New Sidewalk, Curb & Gutter, and Asphalt Roadway including Revisions to On-Street Parking
- New Pedestal Street Lighting
- Restoration of Disturbed Boulevards and Driveways
- Tree Planting
- Guide Rail Replacement at South Street Road Culvert
- Culvert Replacement at South Street
- Additional detailed information regarding how construction will affect the property owner, including garbage collection, etc. will be provided by the County prior to commencement of construction.

2. PROJECT DESIGN CONTACTS

- Brian Lima – Elgin County, Director of Engineering Services – (519) 631-1460 (ext. 117)
(email – blima@elgin.ca)
- Peter Dutchak – Elgin County, Deputy Director of Engineering Services – (519) 631 -1460 (ext. 4)
(email – pdutchak@elgin.ca)
- Geoff Brooks – Municipality of Central Elgin, Assistant Director of Physical Services – (519) 631-1460 (ext. 247)
(email – gbrooks@centralelgin.ca)
- Chris Lierman – Spriet Associates London Limited – Project Manager – (519) 672-4100
(email – clierman@spriet.on.ca)
- Additional Construction Contact Information will be provided in future correspondence prior to commencement of construction.

3. CONSTRUCTION SCHEDULE – 75 WORKING DAYS – APPROXIMATE DATES

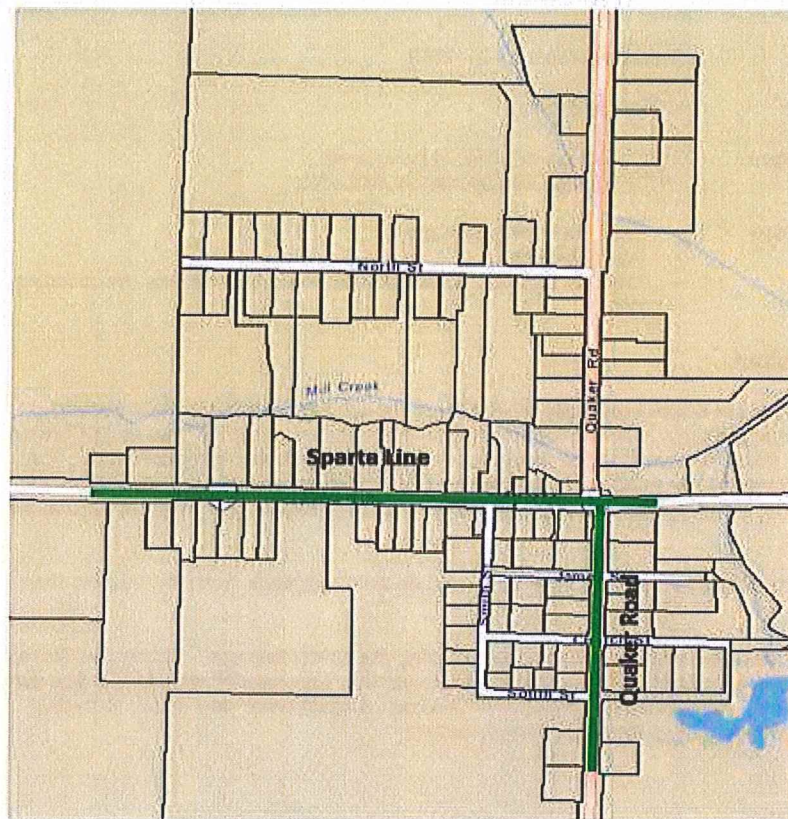
- Tender Period – March 2019
- Construction Period – August 1 (estimated) to November 30, 2019
- Phase 1 – August 1, 2019 to August 31, 2019
- Phase 2 – September 3, 2019 to October 31, 2019
- Phase 3 – November 1, 2019 to November 30, 2019
- Final Top Coat of Asphalt Paving - Spring of 2020
- Schedule does not allow for extensive weather delays.
- NOTE – the Construction schedule is tentative and dependent on Contractor availability.

4. CONSTRUCTION PHASING

- 3 Phases – Helps to minimize the period of disruption fronting each residence, merchant and block.
- PHASE 1: Quaker Road, from Sparta Line to approximately 75m south of South Street.
- PHASE 2: Sparta Line, from a distance of 650m west of Quaker Road and Sparta Line intersection to Hiram Smith Line.
- PHASE 3: Sparta Line, from Quaker Road to Hiram Smith Line.

5. CLOSURES

- All Streets will remain open to through traffic during construction while ensuring access to merchants within the project and construction area are maintained to the full extent possible.
- Emergency vehicle access will be provided at all times during construction.
- Driveways will not be accessible at certain times due to the depth of the underground works or installation/curing of concrete curb and sidewalk. Temporary all night parking on nearby local streets will be available without parking violations being issued.



SPRIET ASSOCIATES

engineers & architects

155 York Street, London, Ontario, N6A 1A8

Tel: 519.672.4100 - Fax: 519.433.9351

E-mail: mail@spriet.on.ca