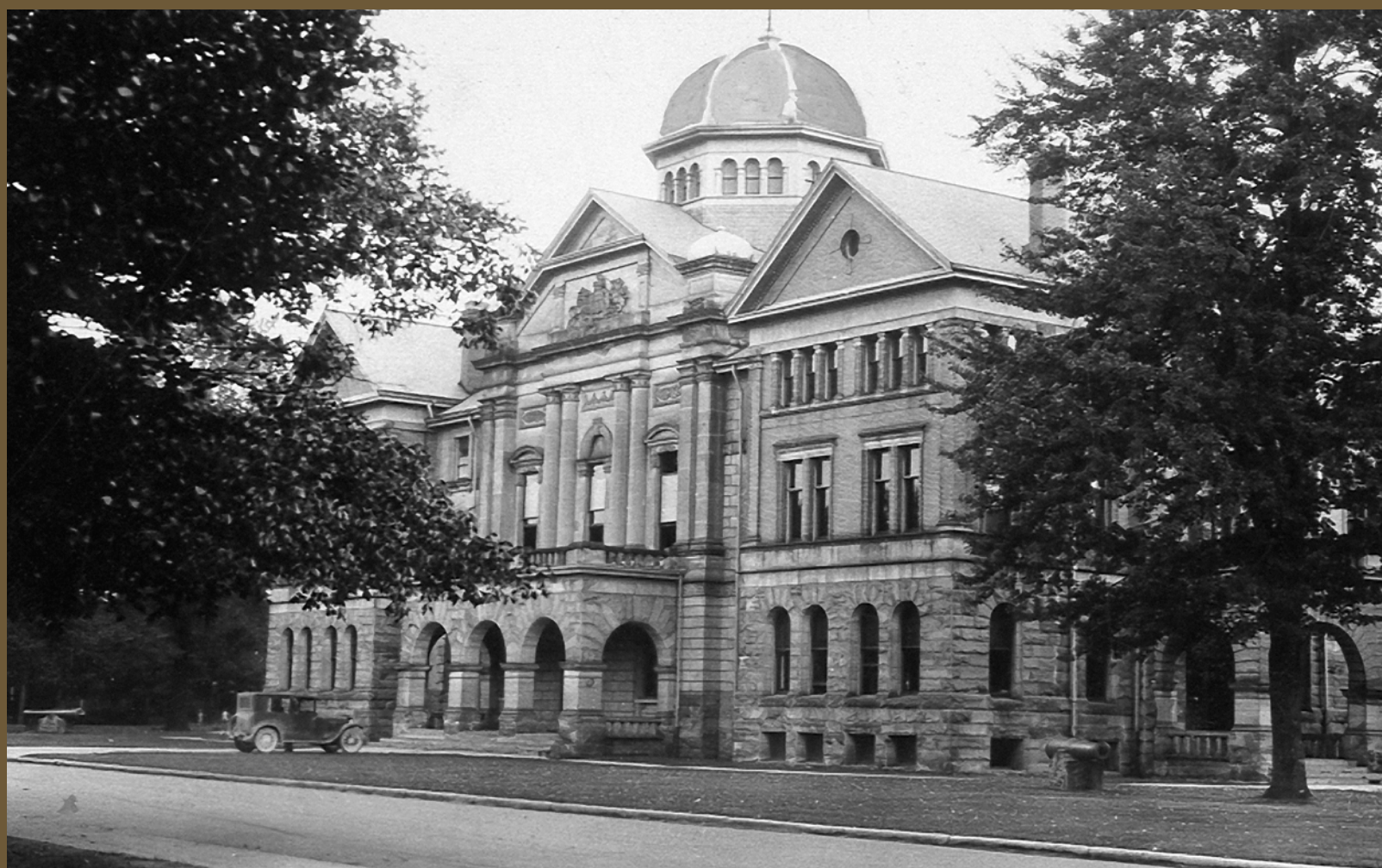




Elgin County Council and Officials 1920



W. H. MILLS, Reeve, Yarmouth (Warden) ; **W. STALKER**, Reeve, Aldborough ; **J. F. MCGREGOR**, Deputy Reeve, Aldborough ; **H. C. MCKILLOP**, Reeve, West Lorne ; **H. W. THOMPSON**, Reeve, Rodney ; **J. A. MCCALLUM**, Reeve, Dunwich ; **H. DROMGOLE**, Deputy Reeve, Dunwich ; **W. PATTON**, Reeve, Dutton ; **W. R. GUNNING**, Reeve, Southwold ; **A. J. MCINTYRE**, Deputy Reeve, Southwold ; **W. M. ANDERSON**, Deputy Reeve, Yarmouth ; **J. R. TEEPLE**, Deputy Reeve, Yarmouth ; **N. S. CORNELL**, Reeve, Port Stanley ; **E. E. McTAGGART**, Reeve, Malahide ; **W. H. ASHTON**, Deputy Reeve, Malahide ; **O. MCKENNEY**, Reeve, Aylmer ; **A. NEVILL**, Reeve, Bayham ; **H. S. COOK**, Deputy Reeve, Bayham ; **T. R. FARROW**, Reeve, South Dorchester ; **A. BARONS**, Reeve, Springfield ; **S. S. CLUTTON**, Reeve, Vienna.

K. W. MCKAY, County Clerk ; **B. B. GRAHAM**, County Treasurer.

Council photograph not available.