

SCHOOL SECTION # 23, YARMOUTH

THE "GLEN SCHOOL"

In 1904 additional land was purchased from the McGregor farm. A modern red-pressed brick structure with slate roof was built, and heated by a hot-air furnace in the basement. As years went by the school was fully modernized with installation of hydro, modern sanitation, etc.

Beech and maple wood was required for the furnace. It was stipulated to be 16" long, and piled in basement by Sept. 1st each year. It was furnished by neighbours at \$2.15 per cord in 1904, to \$6.50 per cord in 1918. Six cords of dry wood, and ten cords of green wood were needed. In 1918, 6 tons of coal were bought. In 1954 a new forced-air furnace using fuel oil was installed.

In 1909 a wooden flag pole was erected in the yard in front of the school-house.

A Literary Society, to meet on Friday evening, every two weeks, with an annual membership of 25¢ was formed in 1921, with these officers: President - J. Taylor; Vice President - Ida Lewis; Secretary - C. L. Walker; Treasurer - Mary Campbell.

In 1922, the School Fair activity was started, and the many pupils took great pride and interest in this. In 1922 a venture was started for nurse inspection, but in 1944 the services of the School Nurse for Elgin County was made available. In 1930, more land was purchased at a cost of \$100.00.

At the early beginning there were four classes in the public school operating for the students. The fifth class was given to help those that could not conveniently go to St. Thomas for more studies. Through the years the Junior and Senior Books became Grades 1 to Grade VIII. The Grades came throughout the early thirties. The final High School Entrance Examinations at one time were set by the Department of Education for the whole Province, and were written in a central area. The pupils from the Glen School wrote the examination in June, at Belmont, Aylmer and Yarmouth Heights. In 1934, the examinations were written in their own school, under the supervision of their own teacher. By 1938 the pupils passed on their teacher's recommendation.

Pencils and scribblers have been supplied by the School Board since 1936, and text books have been supplied since 1951. The earliest text books used in the middle of the 19th century were the Bible, the English Reader, Cobb's Spelling Book, and Daybald's Arithmetic. From this basic beginning, we have now reached the era of countless sets of beautifully bound and well illustrated volumes on every subject.

In 1944, because of low attendance, the question of closing the school was raised, but a Special Meeting of the ratepayers was called, and the trustees assured the Department of Education that the attendance of 5 would be increased to 8, the required number to keep the school open.

In 1945 provision was made for hot lunches for the pupils, and further equipment provided in 1960.

In 1954 a well was drilled, 305 feet deep, at a cost of \$1525.00; and a pump and equipment cost \$550.00. An addition of a teacher's room, boys and girls toilets and washrooms and corridor, of brick veneer, was added to the north side of the school at a cost of \$10,000.00. A new fence and gate was built. Aluminum windows were installed in 1964.

Pupils attending the Glen School in 1962 will remember the presence of "Bats" in the attic of the school. These were of the order of "Chirotera" and the high-pitched sounds they emitted were disturbing to the students. The Abell Waco Ltd. Company of London, Ont. removed them at a price of \$150.00.

SCHOOL SECTION # 23, YARMOUTH

THE "GLEN SCHOOL"

In 1905 the janitor was paid \$25.00; in 1913, \$50.00; and in 1964, \$400.00. The teacher's salary in 1923 was \$1,000.00; in 1949, \$1,700.00; in 1963, \$3,500.00; and in 1968, \$6,000.00.

The "Glen Women's Institute" was formed in 1959 and has contributed much to the equipment of the school as well as the social life of the community.

Music instruction began in the early thirties at a salary of \$5.00 a month. A piano was bought in 1921 at a cost of \$250.00, a radio in 1948, and a television in 1964.

The yearly school meeting was held as close to Jan. 1st as possible, in the school, at 9 a.m. Later these meetings were held at 1 p.m., and later at 8 p.m. The trustees, secretary-treasurer, and ratepayers met to discuss needed improvements, fuel, finances, etc. A May meeting arranged the teaching personnel.

Tribute should be paid to the many people who through the years gave their time and services willingly and gratis that the Glen School and its many students might serve their community well. Also, to those students who have passed through the doors of the little red "Glen School" we give all of them praise and sincere appreciation.

In 1965, the Yarmouth Area School Board, comprised of five members and a secretary-treasurer, elected by the Township ratepayers at the Municipal election, replaced the three member trustee school board, which had served the rural schools since they were organized over one hundred years ago.

In 1968, an Elgin County Board of 14 men, 2 women and a secretary-treasurer, was formed to carry out the functioning of the Elgin County Board of Education.

Compiled by -

Mrs. C. M. Williams
Mrs. R. G. Bushell

MUSIC TEACHERS

James Medlyn	Carl Edmonds
Mrs. Grandy	Mrs. Betty Lou Tillotson
Miss Marilyn Hiepleh	Mrs. Helen Lancaster
Mrs. Betty Lou Ternyik	

JANITORS

C. Harvey Fishbach, Neil C. McIntyre, Duncan J. McIntyre, Patrick Ryan, Earlton Campbell, Willie Blewett, Lorne Campbell, Barney McKiernan, J. F. Campbell, Gordon Fishbach, Mrs. Margaret McGregor, Mrs. Helen Fishbach, Mrs. Nora Campbell, Mrs. Jessie Campbell, Douglas Campbell, Miss Jean Campbell.

TRUSTEES

1879-1904

A. J. Black, A. Douglas, Neil C. McIntyre, W. Blewett, A. C. McBain, A. J. McIntyre, Wm. Curtis, D. J. Lewis, J. C. Smith, John Ewin, John Gilbert, W. A. Woodham, Wm. Paddon, John J. McGregor, John D. Ferguson, John J. Smith.

SCHOOL SECTION # 23, YARMOUTH

THE "GLEN SCHOOL"

TRUSTEES

1905-1964

Neil C. McIntyre, John A. Campbell, Nelson Penhale, C. Harvey Fishbach, Gilbert Taylor, Duncan G. Campbell, John D. Ferguson, Neil Curtis, Cedric F. Evans, Colin McIntyre, Roscoe R. Penhale, Angus Miller, J. F. Campbell, Mervyn W. Paddon, John C. Penhale, Bruce Smith, Russell McCallum, Robert Van Patter, Lorne Campbell, Carl Fishbach, John L. Gilbert, Robert Martin, Stanley Curtis, Earl Grawburg, Keith Davis, Calvin Watson, Mrs. Betty Elms, Morris Taylor.

SECRETARY-TREASURERS

1905-1964

Neil C. McIntyre, Duncan C. McBain, Duncan J. McIntyre, Angus Miller, Cedric F. Evans, Donna Evans (Mrs. R. Bushell), Mrs. Alma Penhale.

INSPECTORS

1882-1969

A. B. Butler, Welbern Atkins, J. A. Taylor, J. C. Smith, A. D. McColl, Earl Rawlings.

Assistant Inspectors: A. B. Lucas, G. Gardner, Mr. Preuter, K. D. Hall, J. F. Lawless, F. S. Cooper

TEACHERS

Mary Sinclair (about 1870)		John W. Emery	90 - 92
Flora Black		Annie Locke	93
Miss Potticary		Louie McPherson	94
Miss Mc Coll		Carrie Campbell	95 - 98
Archie McCallum		Annie V. Milloy)	
- Later Prof. A. B. McCallum		Florence Nichol)	99
Miss McCordic		Lottie Gilliland)	
George Joyce		Edith Danbrook)	
Angus McIntyre		Flora Buchanan	1900
- Later Dr. Angus McIntyre		Louise McKenny	01 - 02
Clara Wigley	1879	Miss Margaret Lawson	03
Edith Parlee	80 - 81	William Rapelje)	
George Emery	82	Jennie McGregor)	04
Hugh McIntyre	83 - 84	Minnie McGregor)	
- Later Dr. Hugh McIntyre			
Miss Saxton	85		
Wm. L. McKenzie	86		
Archie Sproule	87		
Colin Munro	88		
- Later Dr. Colin Munro			
John G. Taylor)	89		
John F. Turner)			

1904 -1969

Miss Minnie McGregor	1904-05
Miss Hazel J. Gilbert	06-07
Donald G. Smith	08-11
Miss Evelyn Clark	12-13
Miss Mabel Baker	13-14
Miss Leola Williams	14-16
Miss Eva Dennis	16-17
Miss Mary Benner	18-19
Miss Hazel Taylor	19-20

SCHOOL SECTION # 23, YARMOUTH

THE "GLEN SCHOOL"

TEACHERS

Miss Ida B. Lewis	20-23
Miss Mary B. Campbell	23-29
Miss Mean E. McCallum	29-30
Miss Edith Kilpatrick	30-34
Miss Kathleen Armstrong	34-35
Clarence Horton	part 34
Horace McGregor	pt.35-36
Miss Mary B. Campbell	36-37
Miss Dorothy Kilpatrick	37-39
Miss Eleanor Skinner	39-40
Miss Mary Pardy	40-42
Miss Bonnie Bissett	42-43
Miss Barbara McCallum	43-44
Mrs. Annie May Meek	44-50
Mrs. Caroline Elgie	50-54
Mrs. J. Audrey Faulds	54-61
Supply teachers in 1958	
Mrs. Dorothy Cook	
Mrs. Hilda Brown	
Mrs. Jean Gredig	
Mrs. E. Anne Anderson Churchill	61-65
Supply teachers in 1968	
Mrs. Vernice Bates	
Mrs. E. Anne Churchill	
Mrs. Sharon Smithson Scheiding	68-69

After sixty-five years of service the doors of the Glen School were closed officially June 27th, 1969. A reunion of former classmates and ratepayers, numbering about 200, was held at the school grounds Sunday Aug. 17th, 1969.

Among those attending the official closing were the oldest female pupil, Mrs. Albert Campbell; the oldest male pupil, Stewart Ferguson; the oldest trustee, Roscoe Penhale; the oldest teacher, Mrs. Hazel (Gilbert) Douglas; the teacher who taught the longest number of years Mrs. Mary (Campbell) Poole; and those coming the longest distance, Miss Eileen and Miss Marion Penhale, of Toronto.

The chairman for the day was F. O. Lewis, former principal of the St. Thomas Collegiate Institute and a former student at the Glen School. Another former student, Miss Mary Alice Paddon, composed a poem for the occasion titled "Hail and Farewell."

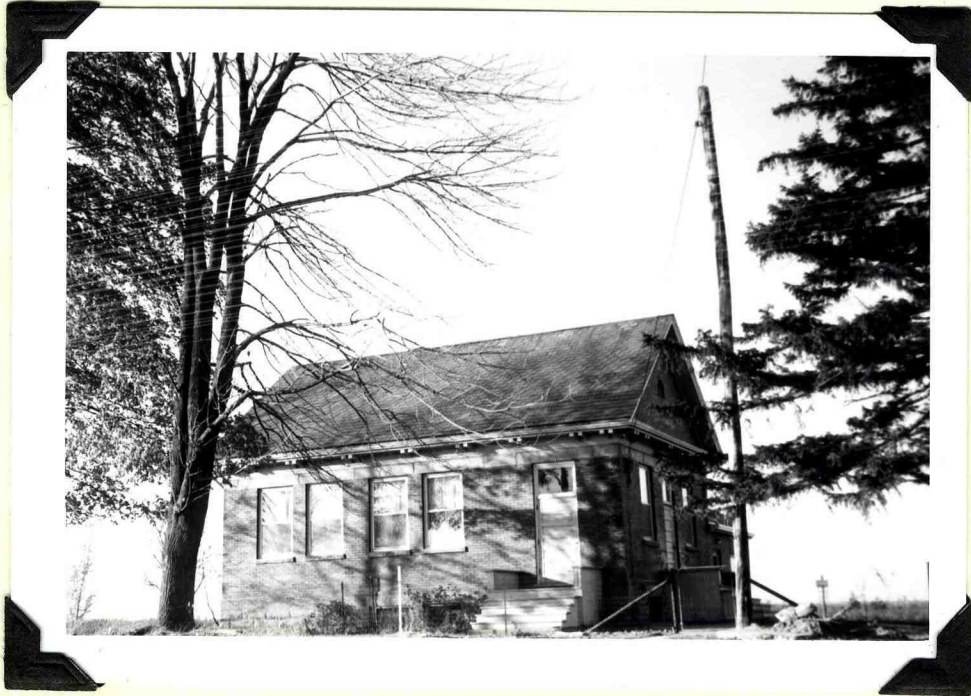
A picnic lunch was served smorgasbord style in a tent set up on the grounds for the occasion.

When classes resumed in the fall, students from the "Glen" were bussed to the new Yarmouth # 2 School at New Sarum.

The building, and its remaining contents were sold by public auction Nov. 29th, 1969. The purchaser was Duncan Black, of St. Thomas. The building and lot were sold again in 1970 to the Polish-Canadian Club and converted into an attractive clubhouse.

SCHOOL SECTION # 23, YARMOUTH

THE "GLEN" SCHOOL



The school as it appeared in 1969 when
it was closed



The Polish-Canadian Hall
1976



S. S. # 19, New Sarum
built 1946

THE ONE-ROOM SCHOOLS COME TO AN END

June 27th, 1969

Through the years the rural schools were administered by three trustees and a secretary-treasurer. These one-room school boards came to an end on Dec. 31st, 1964 and on Jan. 1st 1965 the Township School Area Board, consisting of five men elected by the ratepayers, took over. The first elected members of this school board were: Chairman, Robert Davis; Vice-Chairman, Stanley Cook; members, Harvey Nicholson, Ed. Trimble and Cecil Callowhill, with secretary, Eleanor Smith, all from South Yarmouth.

On April 29th, 1965, chairman R. Davis advised the board to give serious thought to building a Central School in North Yarmouth, and a search for sites began. On Oct. 27th, 1965, they decided to build a Central School to serve all of Yarmouth Township. This proposal was not popular with the ratepayers of North Yarmouth.

A new school board was elected in Dec. 1965, taking office Jan. 1st, 1966. Chairman was Stanley Cook; Vice-Chairman, Keith Davis, (the only member representing North Yarmouth); and members Clare Greer, Harvey Nicholson and Ed. Trimble, with secretary, Eleanor Smith. They were elected for two years.

At a meeting held on Feb. 17th, the building of a Central School was postponed, but on April 13th, 1966, it was decided the new school would be built in North Yarmouth, possibly in the Yarmouth Centre area. On April 26th about fifty ratepayers from North Yarmouth attended a meeting and expressed a desire to have the new school built closer to S. S. # 23, instead of the Yarmouth Centre area.

On Oct. 18th sites were looked for in North Yarmouth, and on Nov. 29th, plans for a new school were drawn up, but on Nov. 1st, 1967 it was decreed that no school would be built in North Yarmouth unless Belmont was included. On Nov. 7th of that year (1967) three farms were optioned (Garton, Dykstra and Andrew Paddon's.)

In December 1967 a new board was elected, taking office Jan. 1st, 1968. Chairman was Stanley Cook; Vice-Chairman, Keith Davis; members, Mrs. Pat Martin, Harvey Nicholson and Don Mannell from Yarmouth, and from Belmont, Frank Pogue and Roy Barker, with secretary Eleanor Smith.

(About this time it was decided it would be more practical to build a school in South Yarmouth and one in North Yarmouth, as it was thought one Central School would have to be too large in order to accommodate all the students from Yarmouth as well as those from Belmont. Consideration was given also to the distance that some students would have to be bussed. A school, to be known as Yarmouth Public School # 1 was planned to be built on the Sparta-Union Road. At a meeting on Jan. 31, 1968 it was decided that the new school to serve North Yarmouth and Belmont would be built at New Sarum and on Feb. 5th, 1968 a property directly behind S.S. #19 was approved.

Meanwhile, on April 17, 1968 it was decided that the three schools in North Yarmouth would be graded with Grades 7 and 8 attending S.S. 23, Glen; Grades 2 and 3 at S. S. 24, Dewar's, and 4, 5 and 6 at S.S. 27, Skeldings with all children being bussed to school.

On May 23rd, 1968 plans were drawn up for the new school building and were approved, and on July 17th final approval was received from the Department of Education. On Aug. 28th, 1968 Gilvesy Construction of Tillsonburg was awarded the contract and construction began on Sept. 5th. On Oct. 2nd final approval came from the Municipal Board.