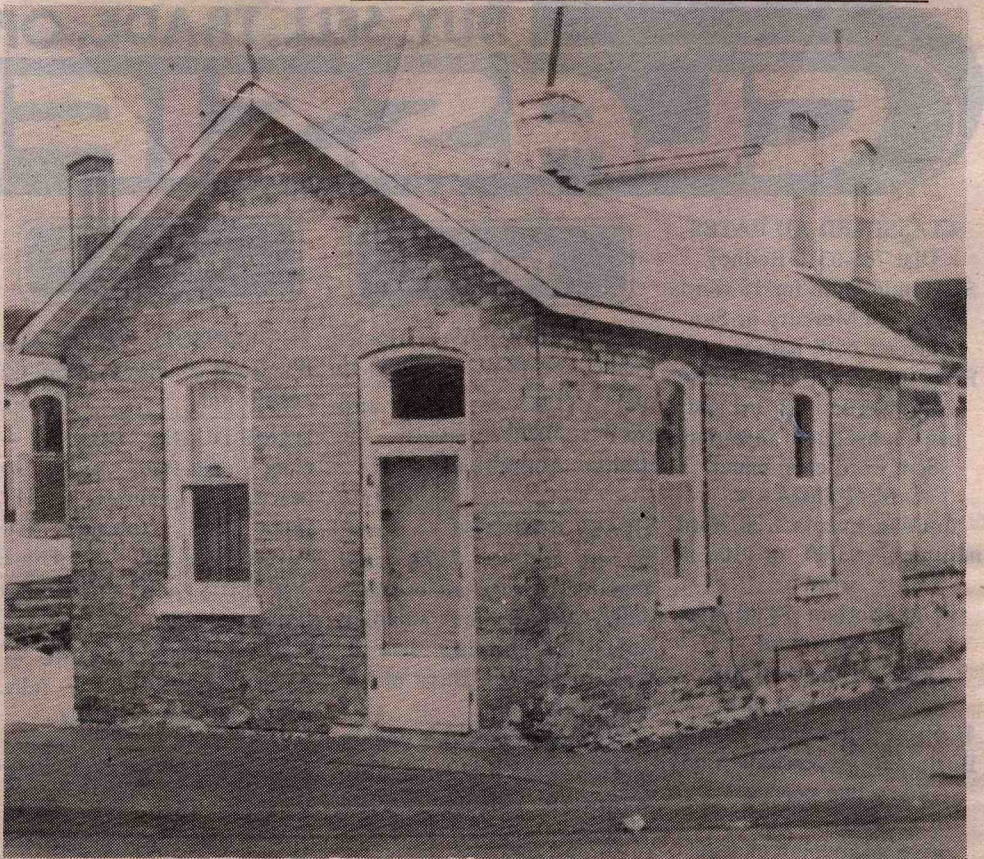




West Lorne's New IGA Store opened for business Wednesday, April 11th, 1962, with a large crowd waiting to enter the store to take advantage of the many

opening weekend specials. Here the crowd is seen waiting its turn to enter the store one hour after the 10 a.m. opening ceremony.

*The West Lorne Sun, Thursday, March 12th, 1987 11*



A WEST LORNE LANDMARK is coming down — the white brick office of the late Dr. William Brock, who was the village's first doctor. He had the office built in front of his house at the north corner of Graham and Maple in 1877, where he doctored thousands of patients until the day he dropped dead there in 1916. When not busy he would play checkers with patients. The doctor's office and home is now owned by Doug Carmichael, who will renovate the house to four apartments. First bricks were removed from the office the first of the week.

Dr. Brock was West Lorne's first doctor and first reeve, being elected in 1907, when the village was incorporated. Previously he served on Aldborough's council. He was a staunch Conservative and member of Grace Anglican Church, where he was the Rector's Warden. He taught school in Jarvis and Wardsville before becoming an MD and setting up a practice in Wardsville, moving to Rodney for a few months before deciding on West Lorne as his permanent location. He died after practicing 39 years. The late Mrs. John Hunchberger was a daughter.



Expanded from 1,300 square feet in 1976 to 7,000 now

The Grand Opening of Rudy Huver's Home Hardware will be held Thursday through Saturday, and will be followed up with special promotions the following four weeks.

He is very pleased with his greatly expanded store--over five times larger than when he bought it--and wants everyone to see for themselves, both the expanded retail area and the greatly increased stock.

Since Mr. Huver bought Crest Hardware from Messrs. Fisher and Kemp and took over in January '76, he has continually improved the interior of the original McKillop and Ferguson Hardware building.

#### Joined Home

With only 1,300 feet of retail area originally, and having experience in the hardware business in St. Thomas, he realized the Home chain was best as his supplier, so joined the hardware distributor immediately.

By '82 it was obvious he could not continue to operate effectively and meet everyone's hardware needs, so added 2,000 square feet to the rear of the building, and improved customer off-street parking behind.

The addition opened that November, and it had the desired results--increased merchandise and better display, thus a greatly increased volume of business.

#### Lemon Building

Owners of the Lemon building proved interested in selling, so the north part, formerly the post office, was incorporated into the hardware store, the other two stores continuing to be operated as a clothing store. It continued that way for over a year.

The Spring of this year, Mr. Huver decided to go out of the clothing business so he could expand his hardware into the other two stores, making 7,000 square feet of shopping area.

With the outward appearance looking like three stores, he consulted with Home Hardware's planning department, whose architect recommended a drastic change to its appearance.

Consulting further with contractor Martin DeWilde, they proceeded to front the store with grey stone and illuminate it at night. Now the facade is modern in every detail and greatly enhances the appearance of the Graham St. business section.

#### Interior

Interior of the original store has been changed by display counters being placed on the angle to better serve shoppers. And the expanded staff--now up to six salespeople--are most helpful in assisting shoppers find what they want, as well as giving advice on product lines.

Although shoppers have been visiting the store throughout three expansions, Mr. Huver invites everyone to view his 7,000 square feet of retail area and greatly expanded stock to see for themselves that West Lorne's Home Hardware is West Elgin's centre for all home and farm requirements.





Facade of Home Hardware a striking view when illuminated.



HONOR OF CUTTING THE CHAIN AT THE Grand Opening of West Lorne's enlarged Home Hardware was given to Sharon Huver, daughter of owner Rudy Huver, right. Holding the chain were

employees Duncan McPherson and Betty Krzyworaczka. Watching in the background were employees Fred Titus, Pat Frank and Marg VanDyk. Not pictured is Bonnie Ratz.



## West Lorne Hardware Merchant

Rudy Huver, is holding the Grand Opening of his greatly expanded store Thursday through Saturday, and he invites everyone to visit the store and see for themselves, have a coffee and he'll give accompanying kids balloons.

Born in Holland, he came to this country in 1956, settling in Amherstburg, where he worked in a factory 12 years before buying a Ross St., St. Thomas hardware.

Realizing his business "was on the wrong side of the tracks," he tried to buy Fisher and Kemp Hardware for two years, before being successful in January '76.

Since coming to the village 12 years ago, he continued to not only greatly expand his business, making it a key factor in West Lorne's business section, but played roles in the community.



JAN., 1989 WEST LORNE HOME RENOVATION MOVES;  
PAUL VERBRUGGHE STARTS OWN REAL ESTATE BUSINESS

Two changes in West Lorne's business section occurred during Christmas--New Years week, when West Lorne Home Renovation Centre moved to the north corner of Graham and Main, and Paul Verbrugghe started renovating 167 Main for his new real estate office.

The former Ronson building had been vacant many months prior to the recent federal election, when Conservatives set up their constituency office there.

Prior to that, it was to have been the new home of the Village Flowers, but staff problems did not permit.

Now it is the new location for the Home Decorating Centre, renovations to which commenced prior to Christmas and continue, it likely being two or three weeks before the owners Tom and Barb Page have it ready for a grand-opening.

They are pleased with the move, despite all the extra work and expense, because the corner building offers far greater exposure for merchandise to passersby.





# GST deciding factor in Thomson closing

By Sheila McBrayne

Thomson's Men's Wear has been a part of West Lorne and the surrounding area for more than 65 years and has seen many changes over the years, but the new GST was the final factor that convinced Ruth and John Thomson to close their doors.

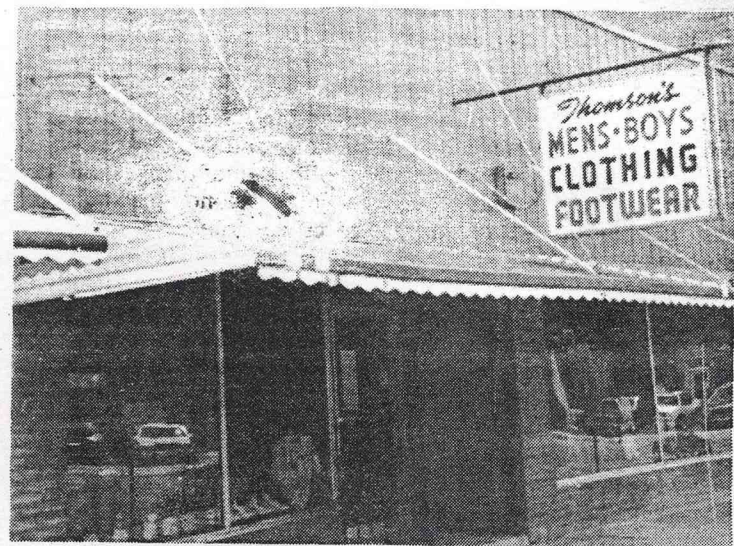
"We're closing the store on Monday (January 1, 1991) the day the GST goes into effect. We were waiting to see if it would pass. We would have stayed open longer. But we made the commitment to close the store when it was officially

passed," Mr. Thomson said. The Thomsons went into partnership in the business in 1970 after Mr. Thomson's father, Norman, passed away. "I used to work here as a kid. I'd say I have about 40 years of experience working here," Mr. Thomson said.

The business sold a full line of men's clothing for work, play and leisure. The store was always located at 227 Graham Road and was expanded about 20 years ago. The Thomsons have seen many changes through the years and among those changes were the store

hours. "The stores aren't open as much as they used to be. They used to be open until 11 p.m. on Thursdays, Fridays and Saturdays. The Thomsons have witnessed many changes in styles through the years, but Mr. Thomson said "clothes always seem to revert to the old styles."

The Thomsons admit that their retirement was not far off when the GST triggered them to close. "The GST was one reason for quitting. It's just a lot of bookkeeping and work. We were going to retire later this year, but the GST just made



THOMPSON'S MEN'S WEAR closed its doors after being a part of the West Lorne business section for over 65 years.  
Mercury-Sun photo

us do it sooner," Mr. Thomson said. Mr. Thomson is looking forward to playing more golf. "It never seemed like I had any time

for golf before. I took my clubs out every spring and polished them up, but never had a chance to golf," Mr. Thomson said.



Farmer's Market