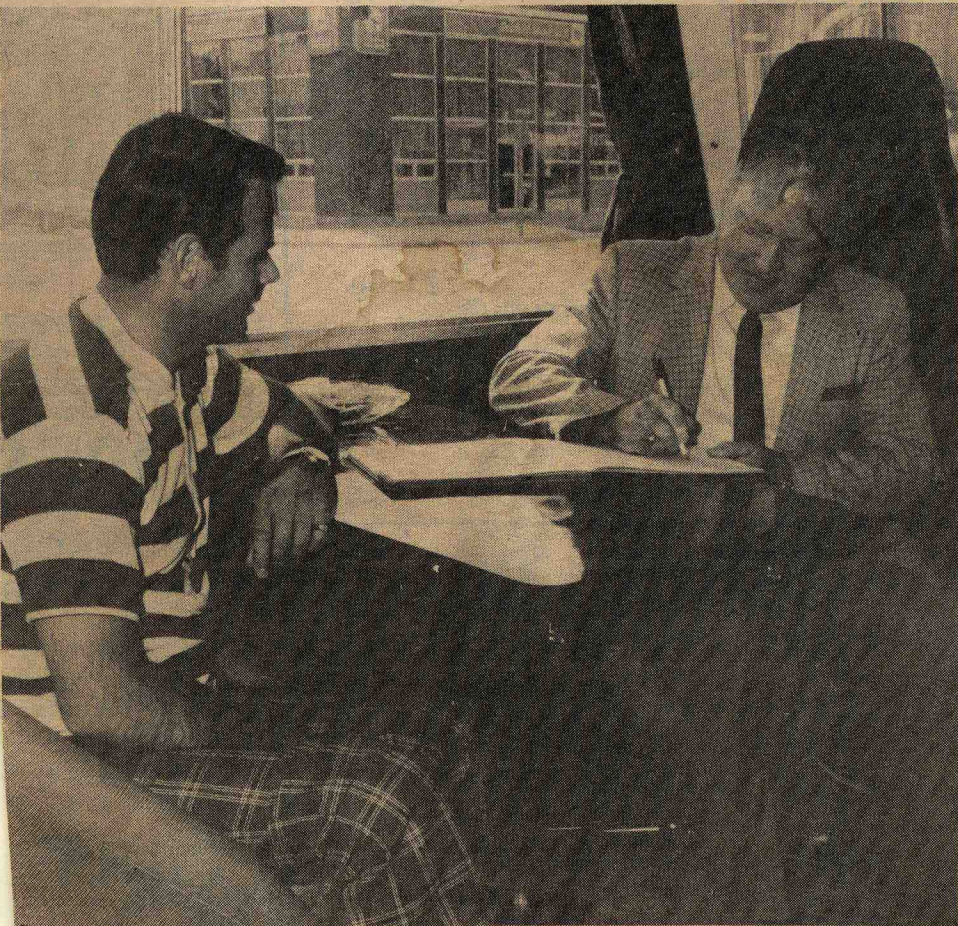


Familiarization tour

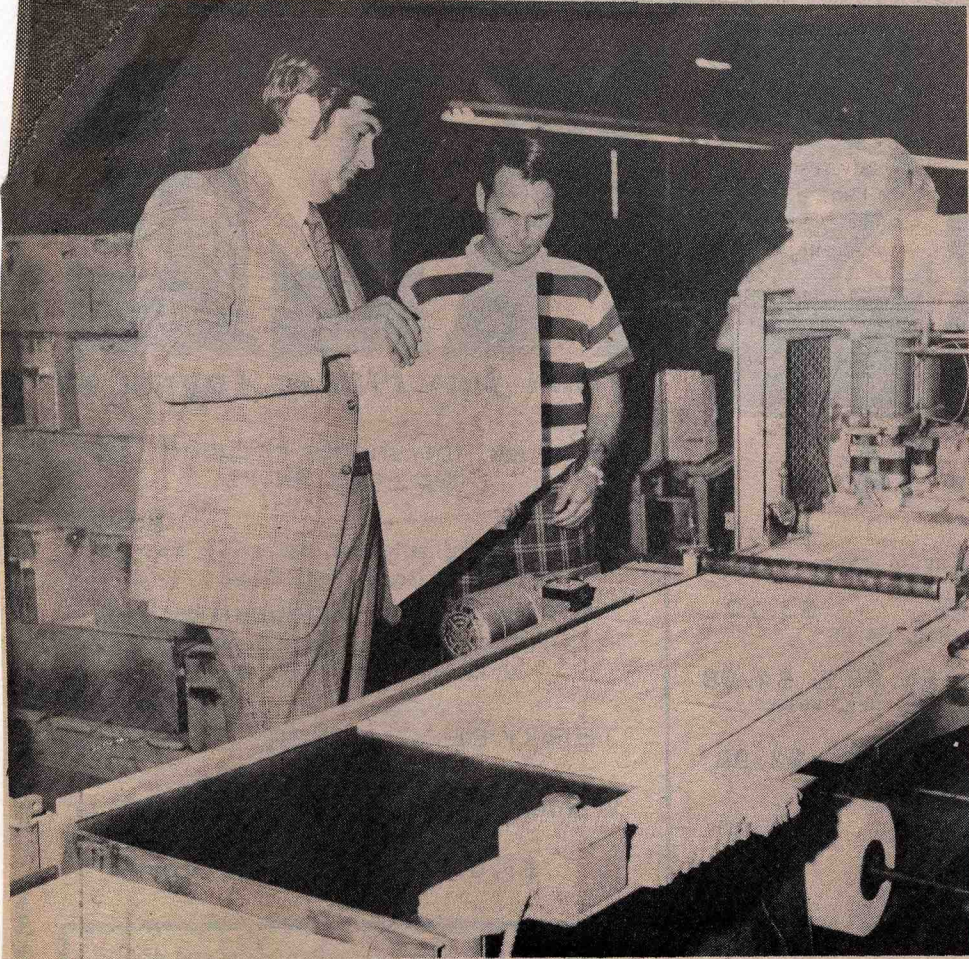
Minister of Industry, Tourism visits Erie Flooring, Lakewood



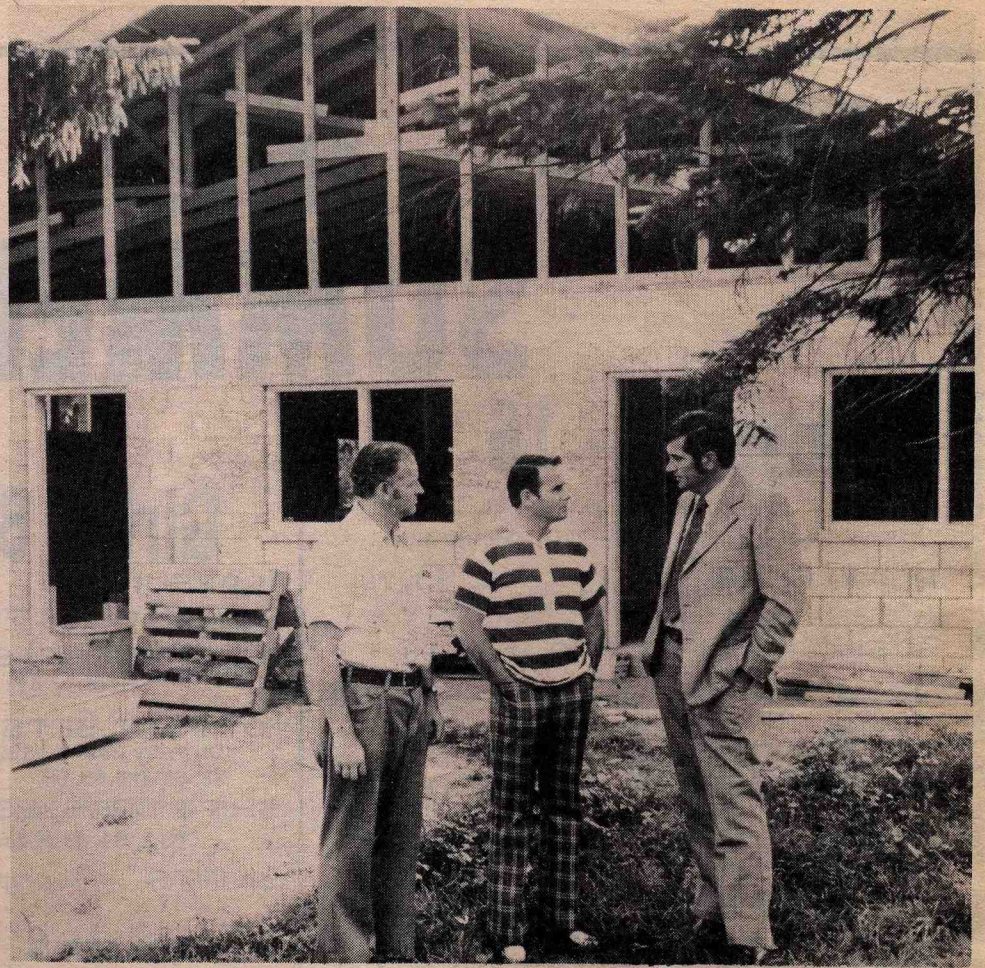
HON. CLAUDE BENNETT VISITED BRIEFLY in front of West Lorne Community Hall with Reeve Douglas Todd, Sgt. F. L. Hurlbut of the OPP Detachment, West Lorne Councillor Harley Walker and Aldborough Reeve and Elgin Warden Nelson Johnston.



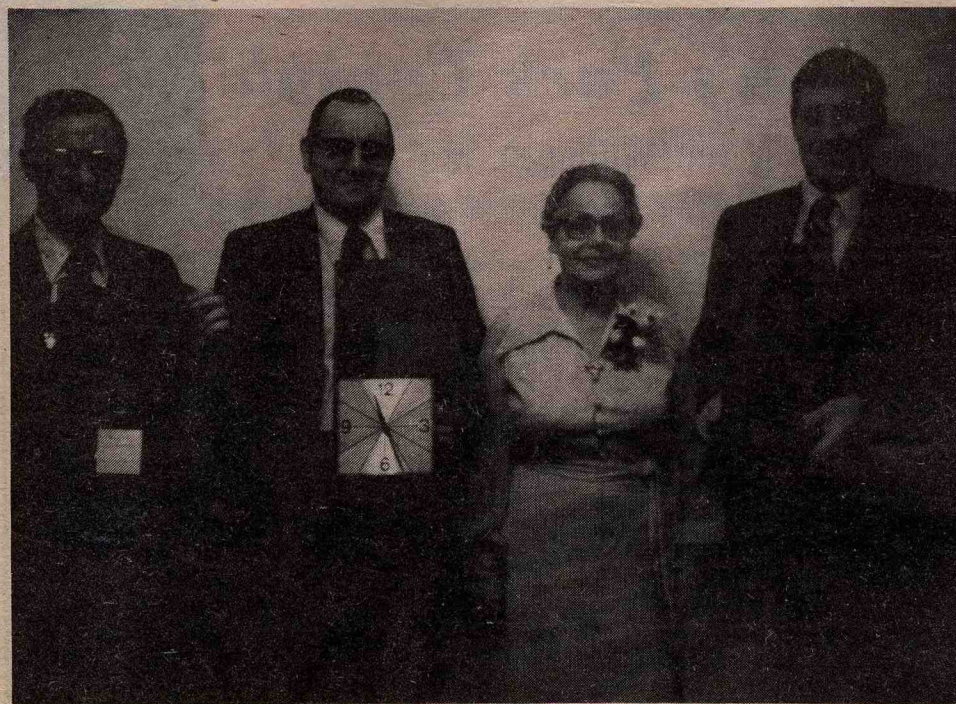
HON. CLAUDE BENNETT WATCHES REEVE DOUGLAS TODD SIGN THE REGISTER in the government's mobile office, which parked briefly in front of West Lorne Community Hall last Wednesday afternoon, when the Minister of Industry and Tourism visited with local municipal officials.



ERIE FLOORING MANAGER BOB WALKER SHOWED THE HON. CLAUDE BENNETT a sample of the company's red oak parquet flooring as it comes off the assembly line during the minister's tour of the strip and parquet flooring assembly lines.



LAKWOOD TRAILER ESTATES WAS VISITED BY THE HON. CLAUDE BENNETT, centre, and he talked with the company's secretary, Bob Walker, about the park's 40' by 100' concrete block recreation hall and some of the campground's other features. David Watson, London, District Director of the Ministry of Industry and Tourism, is at left.



MRS. MARGARET PETHERICK RECEIVED these gifts at her pre-Christmas retirement party in Town and Country Restaurant, which was attended by 50. Holding gifts of walnut were: Ian Cruickshank, a teaspoon rack, George Bell a clock and Jerry Walker a candelabra. The group wished her many years of health and happiness in retirement after working 38 years as Erie's secretary.

West Lorne's Form Rite plant trims staff to 65 employees

Form-Rite Ltd. in West Lorne has trimmed its staff to 65 employees from 145 but all those laid off were offered jobs at the firm's London, Ont., plant, according to West Lorne

plant manager Americo Simoes.

The automotive steel tubing manufacturer has taken the steps to be more competitive within the industry, he said.

Eighty employees received layoff notices in October to take effect December 19th. During a plant shutdown between December 19 and January 5, equipment was transferred between the two plants so the West Lorne plant becomes the primary manufacturer and cutter of tubing.

It is bent at the London plant. In the past the firm purchased tubing to bend.

The tubing is used in brake lines, cooling lines and other areas in the engine. Eighty per cent of Form-Rite's business is with Ford and General Motors.

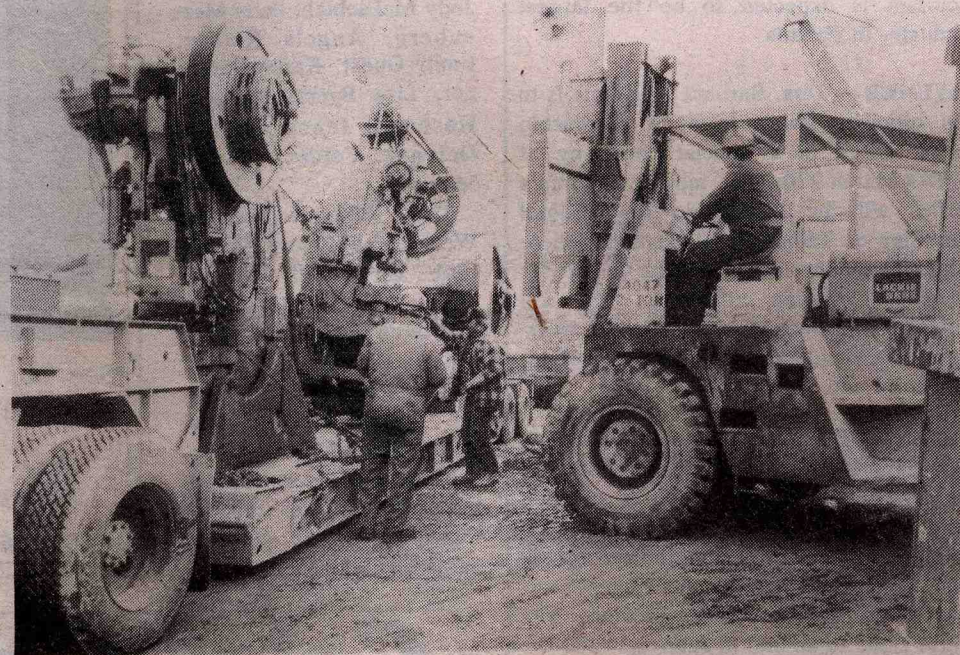
Forty-three of those offered a transfer to the London plant accepted.

Two shifts continue at the West Lorne plant and Form-Rite's long-term goal is to get more machinery at the West Lorne plant and hire more staff back. Mr. Simoes said, "I doubt we'll ever have 150 people back here," he added, "you never know what the automotive industry brings."

West Lorne, Rodney industries booming; expansions rumored



ERIE FLOORING'S TWO NEW KILNS finishing the interior can be started. Jim Smith of Rodney, has the contract. will be roofed immediately so work at



SEVEN LARGE PRESSES WERE UN-loaded at the Rodney plant of Dresden Industrial Friday and Monday, all coming from the company's Dresden plant.

With Erie Flooring building two large kilns to dry 100,000 board feet each, and Rodney's new industry, Dresden Industrial, receiving seven presses from the terminated Dresden operation, expansion of both industries is obvious.

A large expansion was rumored for Form Rite Tube, but it is only a 20 by 30 foot addition for a compressor, Production Manager Americo Simoes states. However, he assures everything is being done to expand production and get employment back to where it was before 100 lost their jobs there before Christmas, 75 of whom accepted work at the company's parent plant in London.

Eighty are employed at Form Rite, which is about half the number when the plant was at peak production over a year ago.

DRESDEN INDUSTRIAL

Dresden Industrial, with four presses sitting idle, they will be put in production as quickly as contracts can be found from the booming auto parts segment of Southwestern Ontario industry.

Last fall, when an industrialist showed interest in locating west of the plant, the Industrial Commission asked if the company would sell land at the north end of its property so Centre St. could be extended further west. The answer was "no," with Manager Rodney Nunn explaining that would restrict future plant expansion in that direction.

With four unused presses, there is a rumor the 450-foot building will be extended to accommodate this and other equipment.

Sixty are employed there, 25 being added since Christmas.

ERIE FLOORING

Erie Flooring is rumored to have developed an automatic machine to make
continued on page 19

Rodney, West Lorne industries

continued from page 1

herringbone hardwood flooring, which could be one reason for the company building the larger kilns. Management is saying nothing about that or future plans.

One hundred and ten are now employed there.

Milner Rigsby is operating at peak capacity with 110 employees. Other than computerising its kilns this year, no major expansion is planned. The past two years expansions of a large warehouse, a sorting-stacking machine building, and a new centrally located office, results in the industry having to catch its breath.

Emblematic Jewellery has 75 employees, which is down from around 100 before Christmas, 25 being laid off then because of the seasonal lag in business. Since then, business has been picking up and the year looks good, Jim Whyte states.

With a flood of eggs, now that chain stores have over-killed the market with 99-cent a dozen of grade A large eggs,

Lashbrook Produce is humming with 14 employees, trying to keep up with demand. Summer being the peak season, some students will be hired then.

CENTRAL WELDERS

Central Welders is humming with 24 employees. While the number is down from the peak of 40 in the late '70s, it is 50 percent higher than the low of 16 in the early '80s.

Five years ago, 90 percent of the company's business was farm related, mainly for gravity feed bins, the other 10 percent being for industry.

With farming in a sad state, Manager Mike Sohl says the company's business has done a complete about face with 90 percent of work being for industry, the other 10 percent for the farm.

So, while some industries are holding their own, others are expanding, and rumors are circulating Dresden Industrial and Erie Flooring are going to expand more this year.