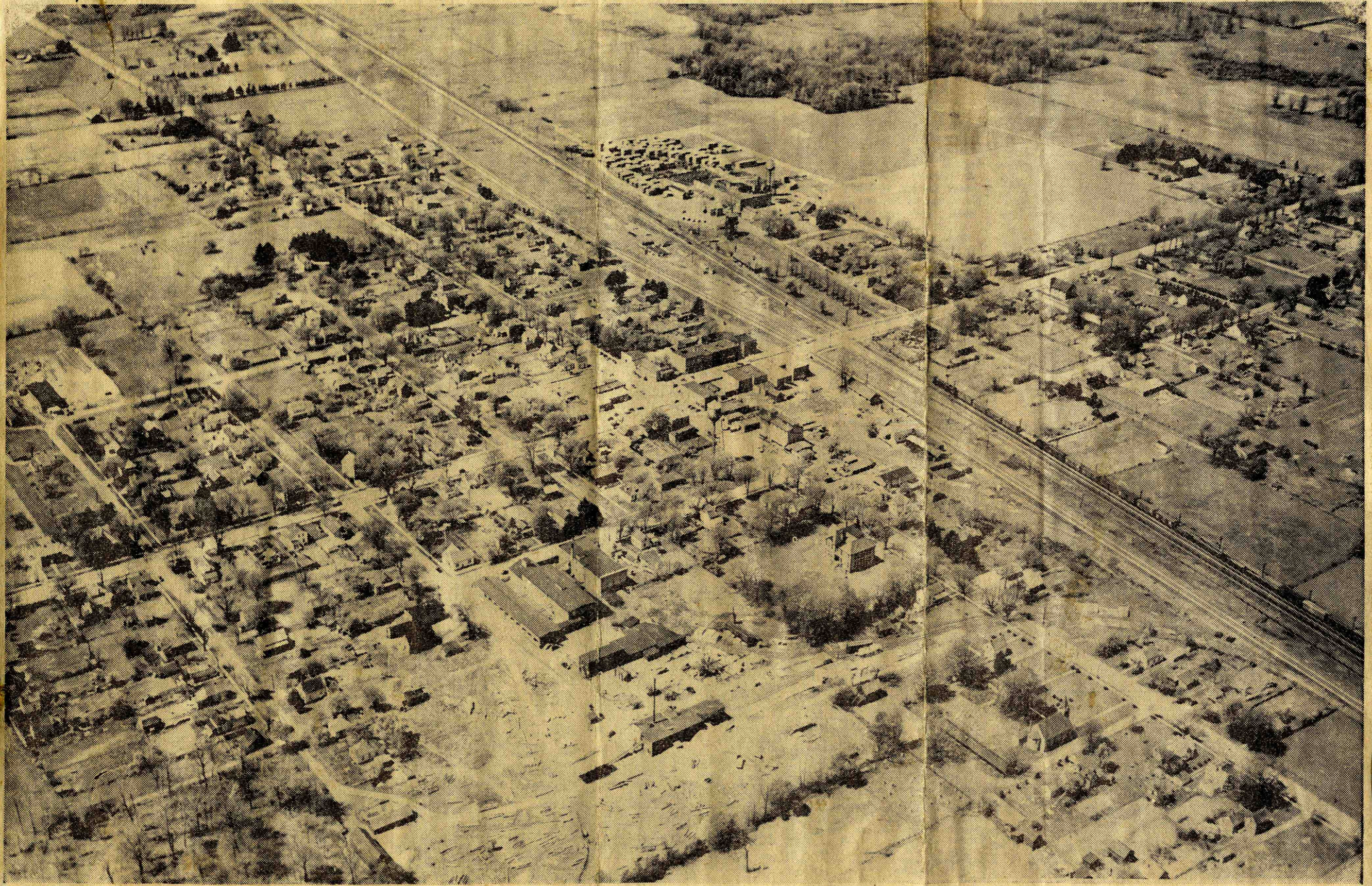


1946 — Your Town From the Air - - - West Lorne - 1946



**WEST LORNE, LOCATED** in the southwest corner of Elgin County, is another community strategically placed in the heart of a prosperous farming district. It is served by two railroads and good roads leading to two main highways. This picture, looking northwest, shows the Michigan Central and the Pere Marquette running parallel through

West Lorne, the Michigan Central on the north. At right angles to the tracks is Graham street, and parallel to the railroads and a short distance south of them is Main street. Northwest of the intersection is the large Erie Flooring plant, West Lorne's main industry. Near the centre of the photo is the tower of the community's water system,

*FREE PRESS AERIAL PHOTOGRAPH* which also supplies water to Rodney and Dutton. Left of and below centre is the big sawmill and, near it, the public and continuation school. St. Mary's Roman Catholic Church can be seen near the lower right corner. Population of West Lorne, at the last census, was about 800.