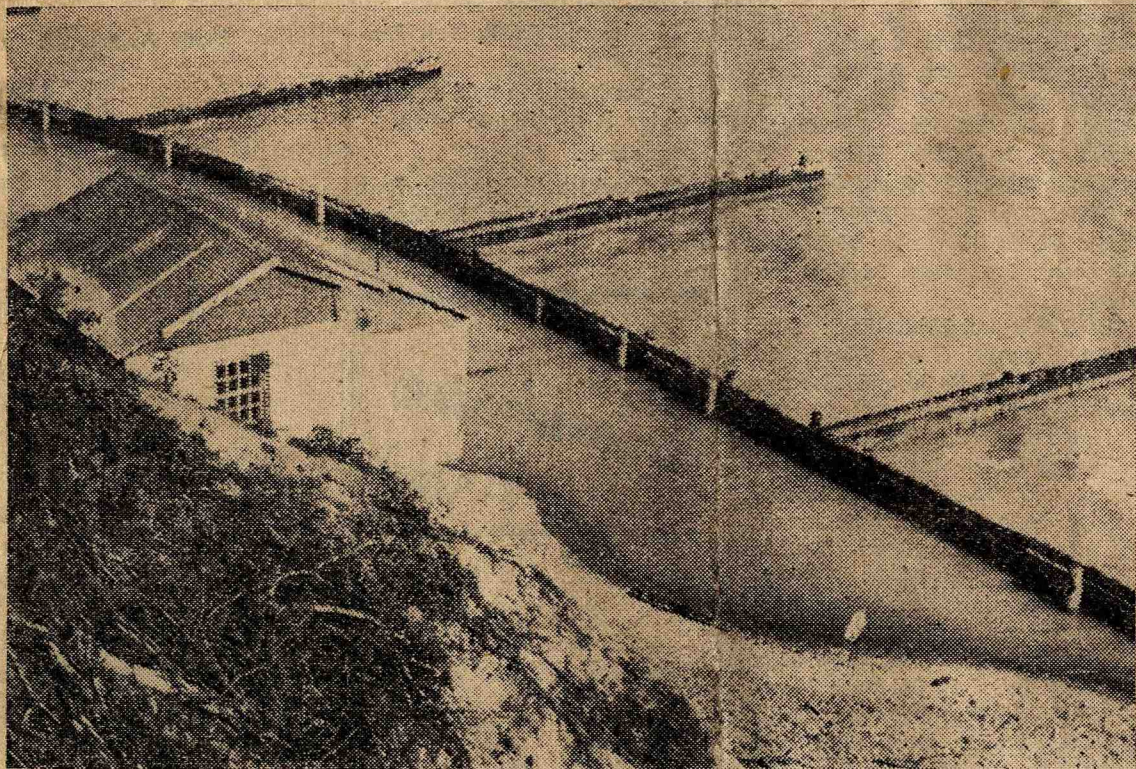


The West Lorne Arena

This new Arena was formerly an airforce hangar built south of St. Thomas. It was purchased by the W. L. C. A. A. It was dismantled and trucked to West Lorne. On October 15th, 1947, work began on its erection. The building was not completed until March 8th, 1948. West Lorne's Intermediate hockey team played their league practically out before the roof was on. The official opening was February 18th, 1949.

WEST LORNE Community Park

This fine park is the result of town and rural co-operation. As one body the people of this district rallied to level, drain and build one of Canada's finest community parks.

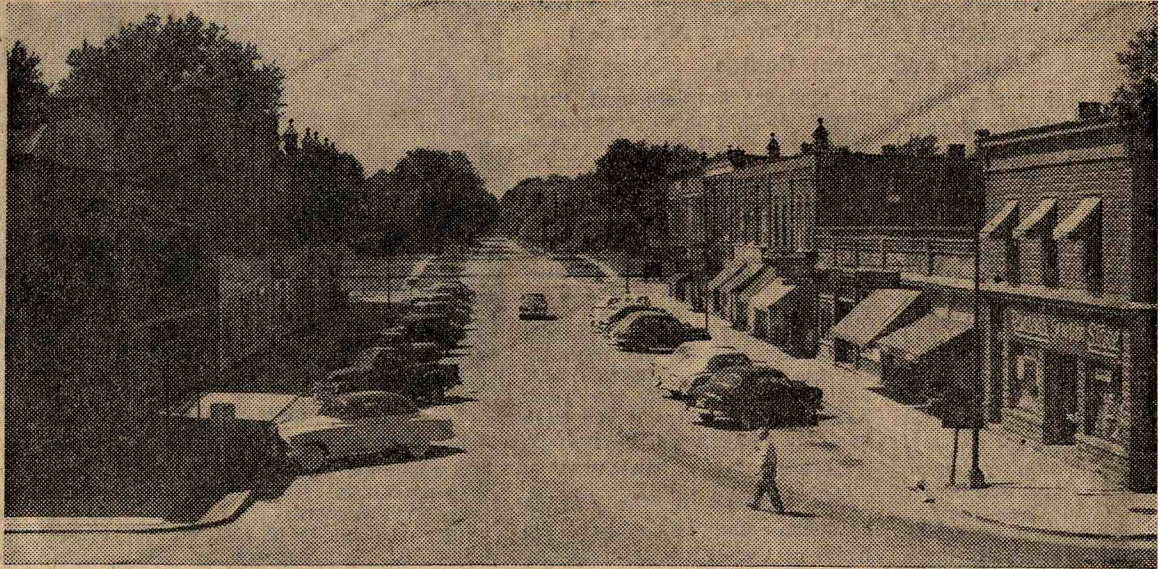


THE 591 FEET OF BREAK WATER AND FIVE GROYNES protecting the shore pumphouse at Eagle are gradually building a protective gravel beach around the all-important link in the water system of Rodney, West Lorne and Dutton. Three of the five groyne are shown here. The picture was taken looking east, thus the greatest amount of "fill" in the south-west corner of breakwater is not evident. *October 16th 1952.*

The West Lorne Waterworks System

West Lorne boasts one of Western Ontario's finest water systems. No reform, no advance is made without its struggles. West Lorne is to be complimented and particularly its energetic reeve at the time, Mr. Earl Lemon, for a municipal effort that is enjoyed by the majority of citizens of West Lorne, Rodney and Dutton. Lake Erie, four miles south, provides an ample supply of water. The council at the time was Reeve Earl Lemon; Councillors, Merritt, Root, Miller and Ollett.

Villages and Busy Trading Centres



Part of the main business section in West Lorne, looking north from the community hall square. For some years, this progressive community had two names, the railway station was Bismarck; the postoffice was West Lorne, named after the Marquis of Lorne.



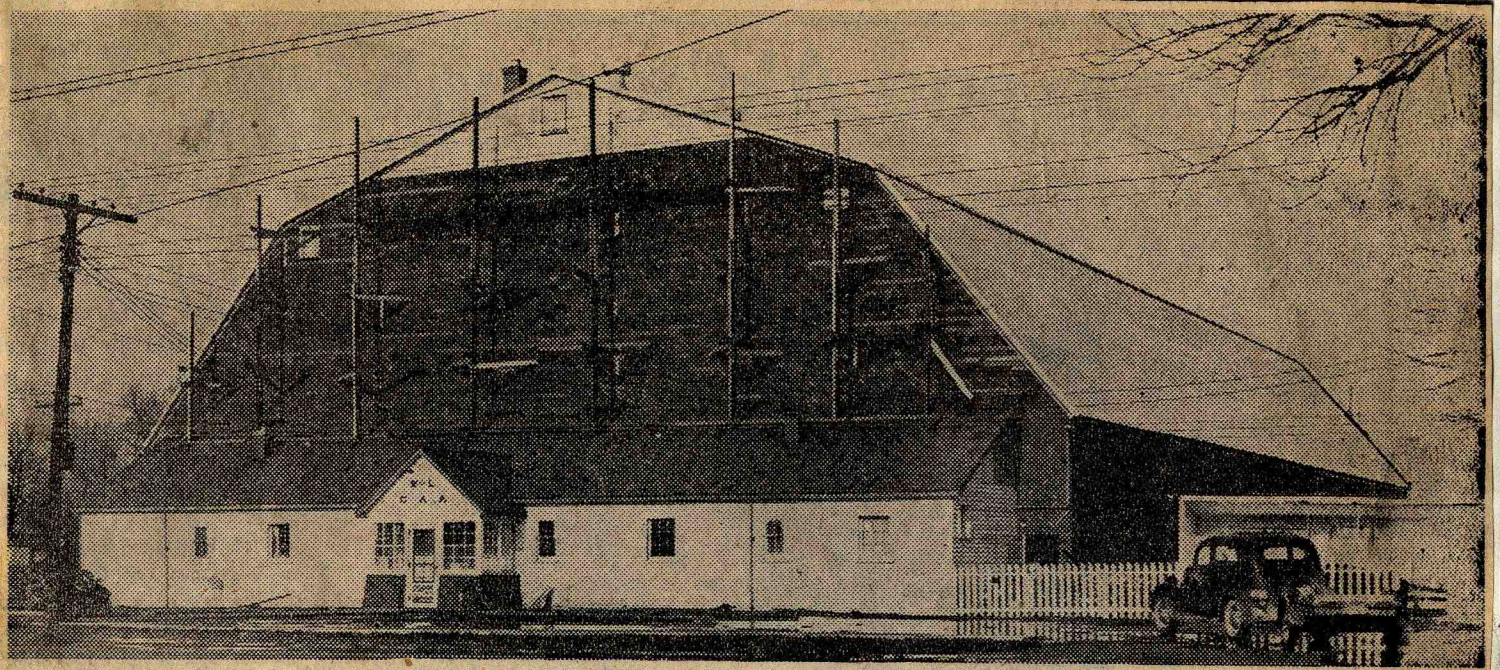
WESTERN ONTARIO'S
NEWEST AND BEST

ROYAL THEATRE

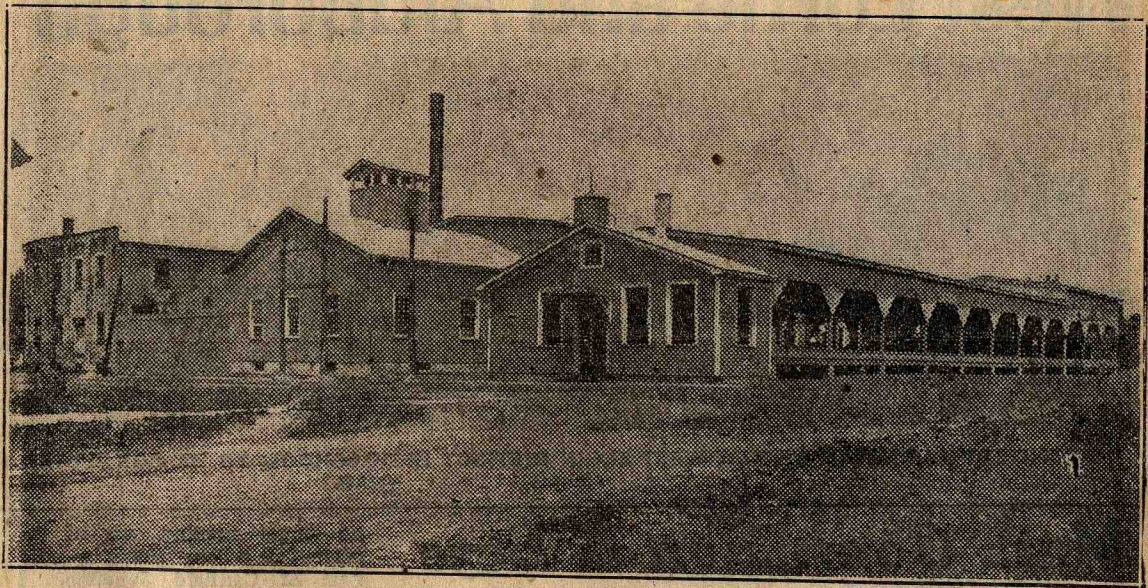
WEST LORNE

K. M. WILLIAMSON

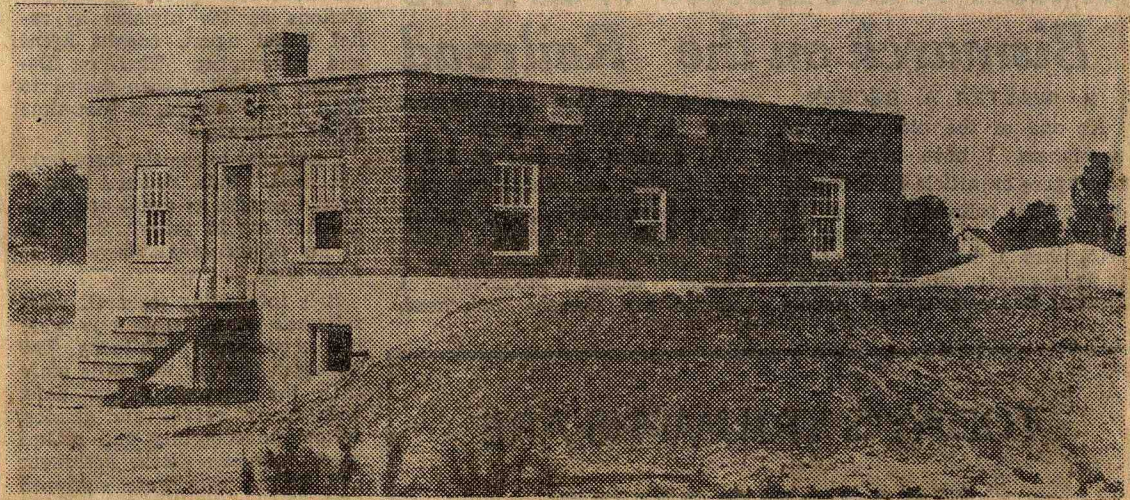
R. D. McEWAN



WEST LORNE BOASTS A FINE ARENA, A COMMUNITY EFFORT



CANADIAN CANNERS PLANT AT WEST LORNE



WEST LORNE'S FILTRATION AND PURIFICATION PLANT; LOCATED ON THE SHORES OF LAKE ERIE, A MILE SOUTH OF EAGLE