



Monument of the
Talbot Estate.



Malahide House.
Col. Talbot built a new larger log home 1832-1833.



Malahide House.

ALL photos taken 1993-
1994. by Helen VAN BRENK.



Malahide House
in Winter.

Col Airey reconstructed Malahide
and built around it in 1848.

Salvation of Talbot estate may lie in relics

LONDON
FREE PRESS
30 JULY 87

ST. THOMAS (Staff) — Possible archeological treasures on the Colonel Thomas Talbot estate could be a major factor in the drive to preserve the historic site, says St. Thomas Alderman Gary Baker.

Baker, of the Talbot Estate Foundation, said archeological potential from the "virgin soil" on the 775-acre (310-hectare) estate is another factor, besides the history of the property, that would be explored in a proposed feasibility study.

But the planned three-to-four-month study to assess the estate's historical importance, tourist potential and archeological significance has been delayed while awaiting the word on a grant from the province.

The foundation raised \$13,000 for the study from private donations since it was formed in 1985 and asked the province for \$25,000 in March, but Baker said there has been no reply from the culture and citizenship ministry.

The estate, 20 kilometres southwest of here; has been for sale since 1984, but no one wants to pay the listed price of \$1.5 million. The foundation was formed to convince the government of the site's historical significance and preserve it, rather than have it bought privately and possibly developed.

Ian Kenyon, archeologist with the heritage group of the cultural and citizenship ministry, said he looked around the estate several years ago and it had "really good (archeological) potential."

Kenyon, of London, said he found the remnants of a "little industrial community" that was destroyed in the War of 1812, including a mill, cooper shop and distillery.

"It might not look like much to most people," he said, "but from an archeological standpoint, most evidence of settlements like that have long ago vanished below modern city streets."

Grant makes possible study of Talbot estate

LONDON FREE PRESS 1 AUG. 87

ST. THOMAS (Staff) — A Toronto consulting firm will go ahead with a study on the feasibility of preserving the Colonel Thomas Talbot estate after provincial government approval of a \$26,130 grant.

Culture and Citizenship Minister Lily Munro approved the grant this week, Christine Troughton, a ministry spokesman in London, said Friday.

The Talbot Estate Foundation, set up to preserve the historic site, had been despairing over the long wait for a response after applying for the grant in May.

"That's great," responded foundation chairman and historian Wayne Paddon. "We can finally get

going again."

The foundation had raised \$13,000 for the study, but donations had slowed to a trickle. The feasibility study of the tourist potential, historical importance and archeological significance of the 775-acre (310-hectare) site is expected to rally more support for its preservation and convince the province that it should not be sold privately.

The estate, 20 kilometres southwest of here, has been for sale since 1984, but no one has wanted to pay the listed price of \$1.5 million. Talbot settled 27 townships on the north shore of Lake Erie around 1800 and is prominent in Southwestern Ontario history.

Also, he said because a creek runs through the estate it was an ideal site for prehistoric and historic native camps, of which there was evidence. "I think there are some really interesting things there."

Kenyon said his office's role, if the ministry approves the study, will be to review the study and make recommendations. But the actual research would be conducted by the private consultant doing the study, he said. "It's hard to prejudge how archeology relates with the over-all feasibility study."

Wayne Paddon, foundation chairman and historian, agreed with Baker that the archeology on the site could make a big difference in influencing the province, but said the long wait to hear from the ministry may spell death for the preservation drive.



The main House (New Bliss House). 1870 it is of the MacBeth era.

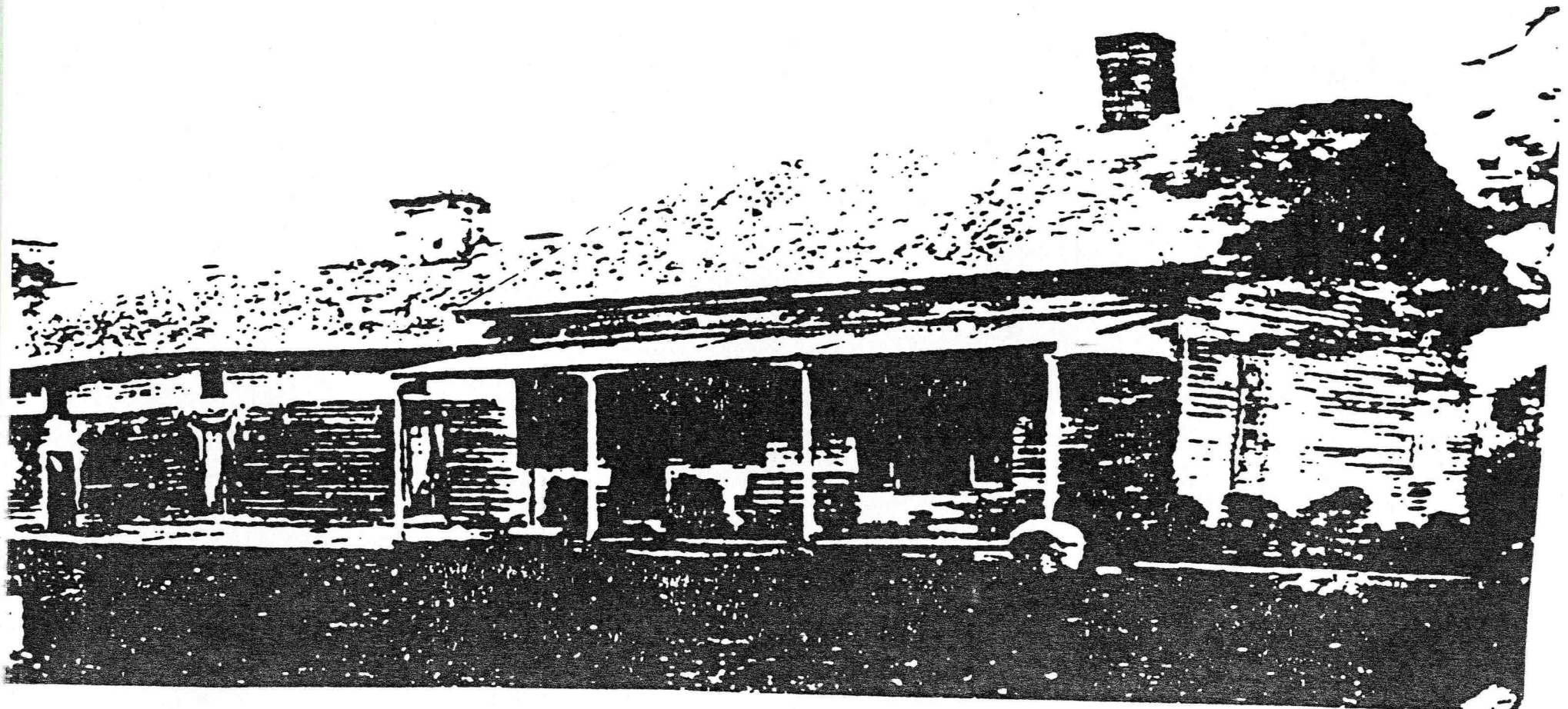


The main House in Winter.



Tree 400 yrs old

Tree 400 yrs old.



Malhide House c. 1850
Notice the Airey addition with porch



Caretaker's Cottage.

The Small Farmhouse
Built in the late 1860-1870.
it is now occupied by the
caretaker.



Winter photo of the
Small Farmhouse.



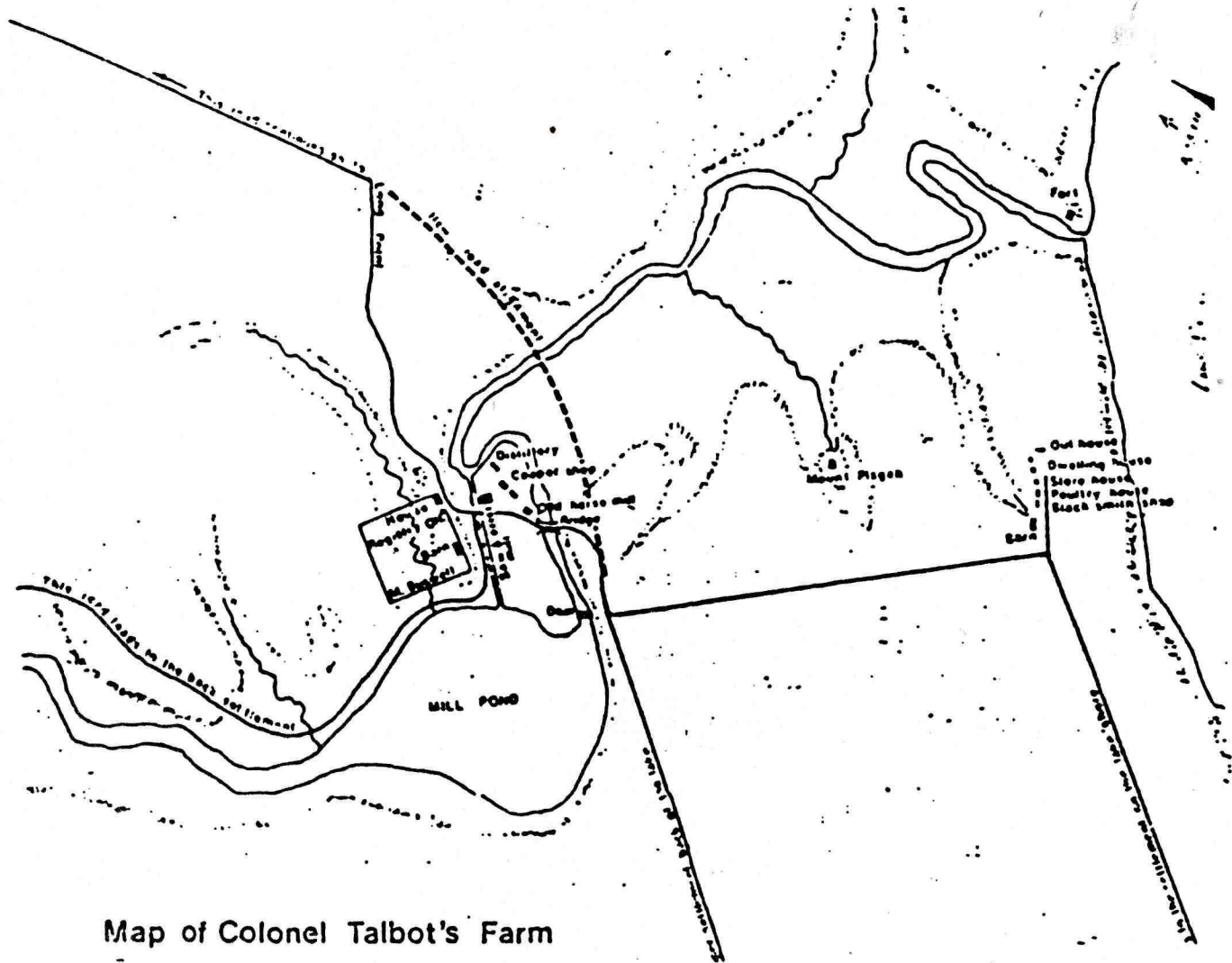
Birdsnest. (Chalet).

Summer Cottage built
by the Ker Family this
is from the last 30 yrs.



FIRST TALBOT HOUSE
OVERLOOKING PORT
TALBOT - 1803

FROM A PAINTING IN THE
DOMINION ARCHIVES



Map of Colonel Talbot's Farm