

ANDREW ROBERT SUTTON

PTE. — A10028

SON of Mr. and Mrs. Joel Sutton. Enlisted for active service January 26th, 1942, with R. C. A. S. C. in London, Ont., and all during his service has been a driver. In Canada he served in Kitchener two months; in Camp Borden nine months; Suffield, Alberta, twenty-two months; Red Deer, Alberta, nine months, and London, Ont., four months. He is now out on six months farm leave.



ANDREW ROBERT SUTTON

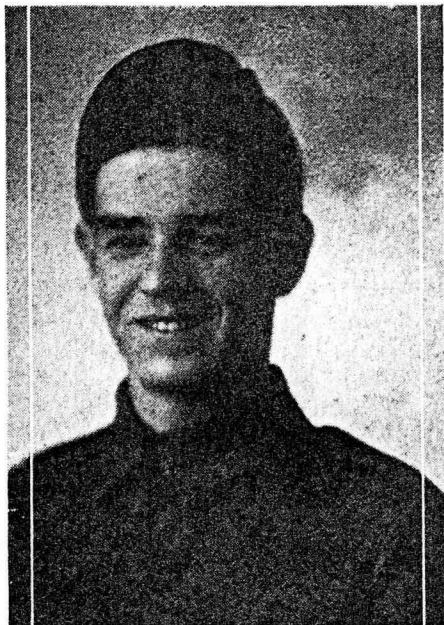
ELGIN JOEL SUTTON

TPR. — A44565

FOLLOWED his brother into the service by joining the Elgin Regiment in July, 1940. He went overseas with this regiment. Off the coast his ship was in an accident and had to return for repairs, so this group arrived later in England. Due to a motorcycle accident he spent nine weeks in a hospital in England. He was transferred to the Fort Garry Horse, 10th Canadian Armoured Regiment, and fought through France, Belgium, Holland and Germany.



ELGIN JOEL SUTTON



E. C. WAITE

E. C. WAITE

PTE. — A605832

SON of Mr. and Mrs. Ed. Waite, Iona Station, was born in Dutton on October 19th, 1919. He joined the army at Chatham on December 4th, 1941, and served two months in Chatham and four months at Kingston. In May, 1942, he was given farm leave till his discharge on October 16th, 1945.



HOWARD RALPH WALKER

HOWARD RALPH WALKER

PTE. — A105541

BORN in Wallacetown on June 14, 1924. He joined the Hussars R. C. O. C. on December 6th, 1942, and served one year in Canada and two years in England. He is (December, 1945) still in the service.

T
A
B
O
T

S
I
A
B

Malahide Castel in IRELAND, this
were Colonel Thomas Talbot was photo taken by Jim Ford.
BORN. Sept 1994



TALBOT ESTATE - Known as malahide Farm

These farm's and houses are located on or part of lots 21, 22, 23, 24 and A on concession XI (11) and 21, 22, 23, 34 A on concession XII (12) of Dunwich Township.

Malahide house is on concession 12 lot 23 and 24 May 7, 1804 Crown to Colonel Thomas Talbot 1300 acres.

DEED August 5, 1850 Hon Thomas Talbot to Colonel Richard Airey 1300 acres. September 19, 1864 Colonel Richard Airey and wife to Henry C.R. Becher.

GRANT October 3, 1925 Talbot MacBeth (a widower) to Clarence Augustus Pfeffer (650 acres lot 23) (\$75000).

GRANT September 7, 1943. Grant of Clarence Augustus Pfeffer, Timber with Consent of Senior Corporation to Gertrude Springsteed (all trees and timber on lot 23).

GRANT December 28th 1948 Clarence Augustus Pfeffer and wife to Milton Stanley Berry (672 acreas \$30 000)

GRANT June 10th 1954 Milton and Lenore Berry to Frederick Innes Ker.

GRANT February 8th 1963 Frederick Innes Ker to David Innes Ker and wife and also John Southam Ker and wife and they made it Port Talbot Farms Limited.

TRANSFER On May 31st 1989 Port Talbot Farms Limited to Stonebridge International Inc. for \$1 475 000.

CHANGE 31st of May 1989 Stonebridge International Inc. to Canada impereal Bank of Commerce. \$4 000 000 - Bank foreclosed on Stonebridge. Sold to Joel Williams Jones of Windsor for \$1.5 million on October 30th 1993.



Thomas Talbot
1771 - 1853

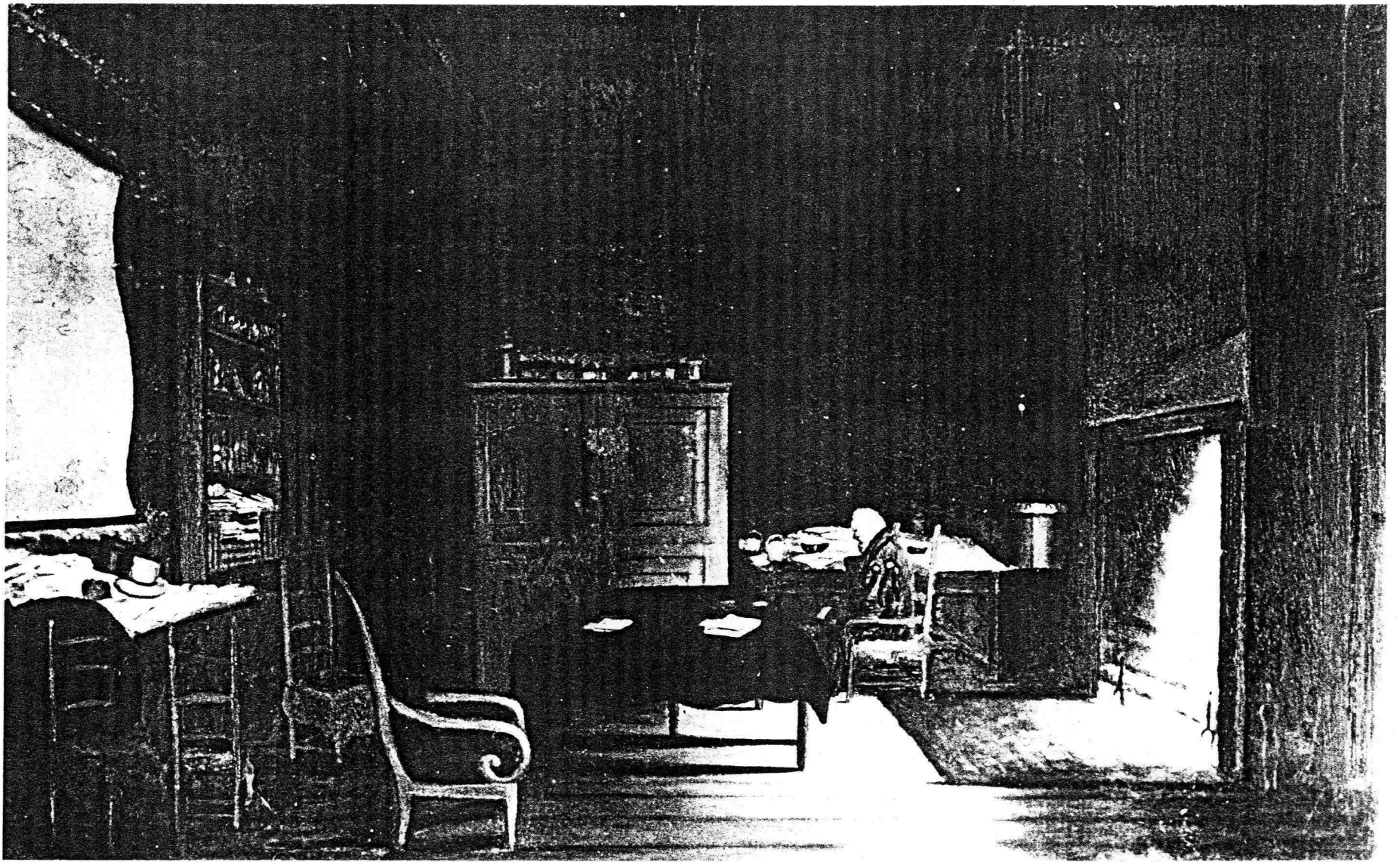
Although John Graves Simcoe made plans for the area that is now London as early as 1793, settlement did not really begin until Thomas Talbot arrived in 1803. Talbot was a close friend of Simcoe and served as his private secretary in the early 1790s.

By the early 1800s, Talbot had abandoned his military career where he was ranked colonel, obtained a large grant of land and supervised settlement in Elgin County. An official settlement ceremony was held on May 21, 1803 when Talbot chopped down the first tree in his principality.

Settlers described Talbot as an eccentric, gruff and miserly alcoholic who was obsessed with acquiring a large estate at the expense of the poor.

He had a unique land distribution system. For every 81 hectares (200 acres) of land granted to him, he gave 50 to a settler and kept 150 for himself. This allowed him to build up a large personal empire of about 15,581 hectares (38,500 acres) by the late 1830s.

Despite his unfavorable reputation, Talbot is considered father of much of the colonization along the shore of Lake Erie and region. During a 50-year period, he was responsible for the success of settlement and road networks in 29 Southwestern Ontario townships and towns, including London.



This picture is of Colonel Thomas
Talbot sitting in his rocking chair.
Date unknown.