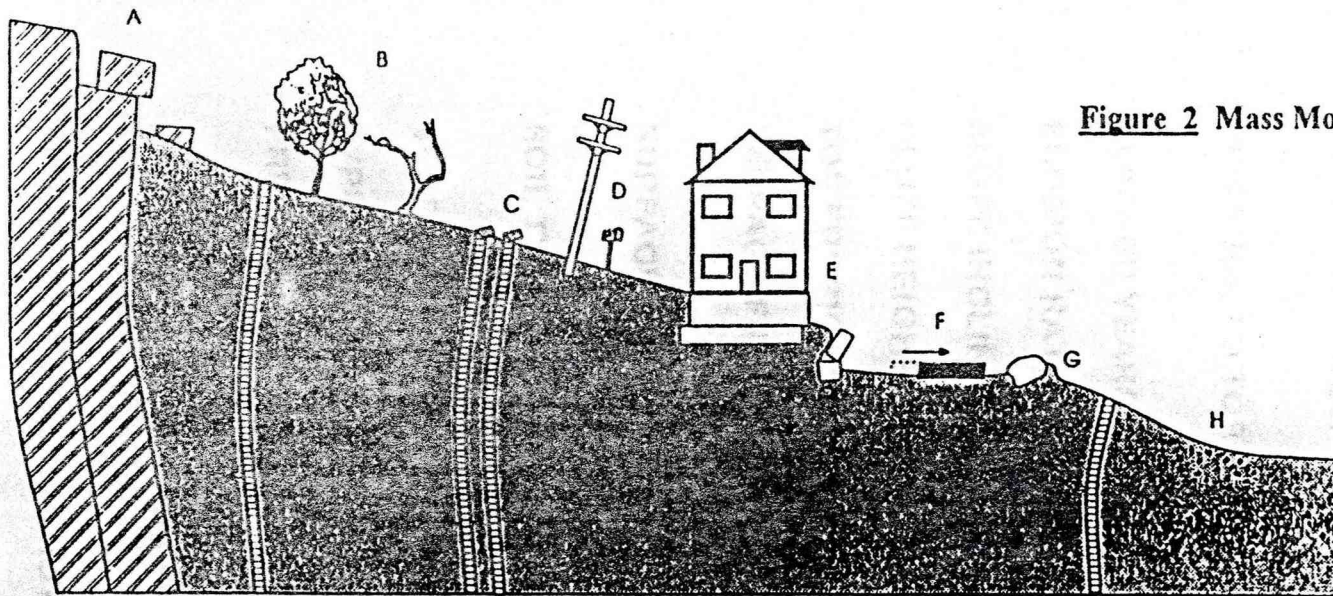
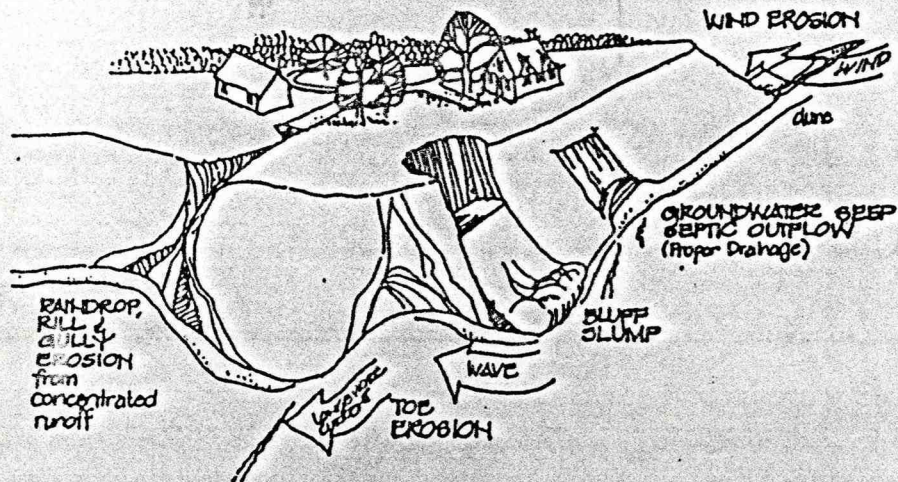


Figure 2 Mass Movement

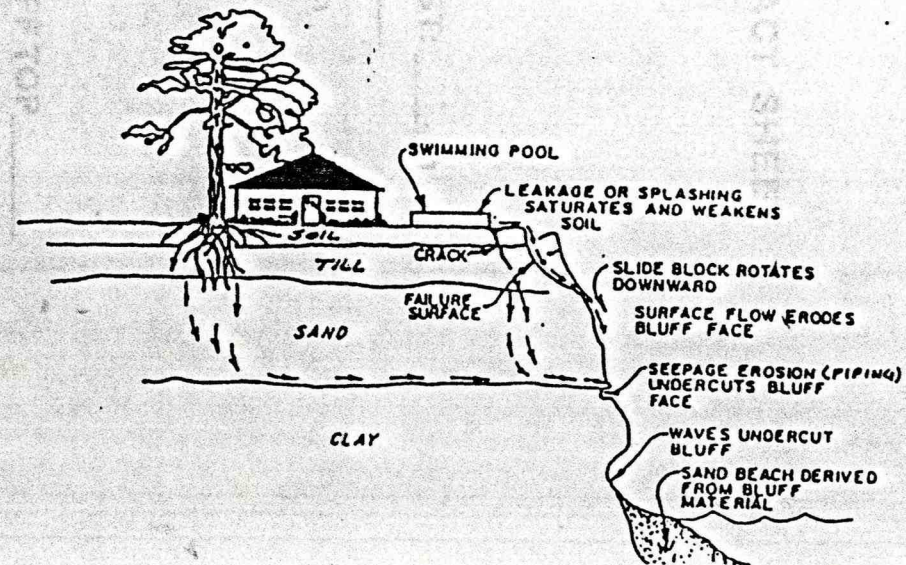


Common evidences of creep: A and C represent rock-creep; all other features shown are due to soil-creep.

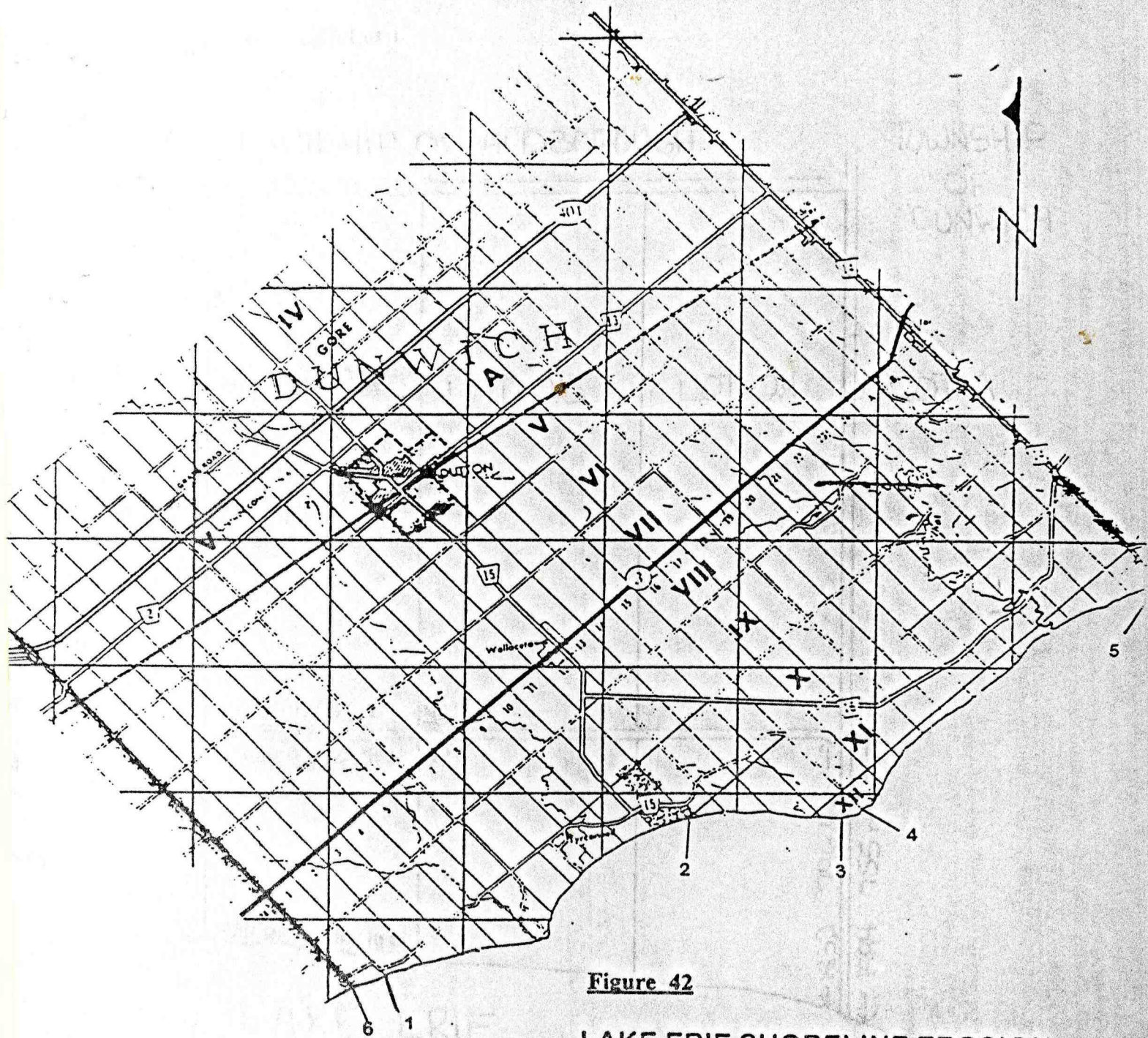
- |   |  |
|---|--|
| A) moved joint blocks   | E) broken or displaced retaining walls and foundations |
| B) trees with curved trunks concave upslope                   | F) roads and railroads moved out of alignment          |
| C) downslope bending and drag of bedded rock, weathered veins | G) turf rolls downslope from creeping boulders         |
| D) displaced posts, poles, and monuments                      | H) stone-line at approximate base of creeping soil     |



Erosion Process



The erosion process affects the soil at the particle level, by dislodging and removing (transporting) the soil particles from the parent mass (with water movement as the agent, see Figure A 2.14). Other process

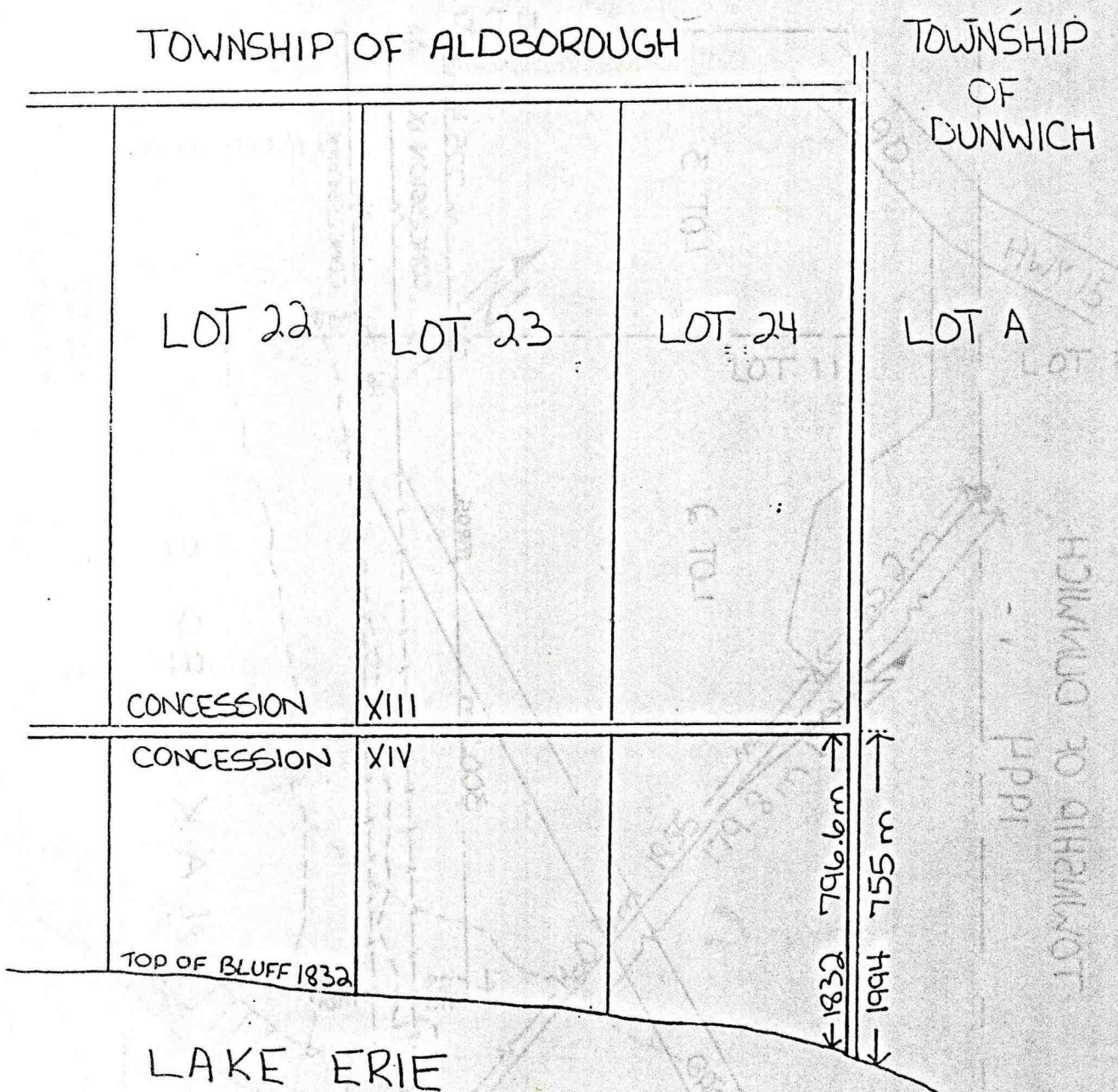


**Figure 42**

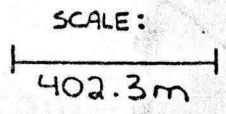
**LAKE ERIE SHORELINE EROSION  
ELGIN COUNTY  
TOWNSHIP OF DUNWICH**

SITE N.-	LOT	EROSION RATE (m/100yr)
1	2	79.25
2	11	116.41
3	15	No Erosion
4	16	96.6
5	C	15.94
6	1	19.51

Figure 43 Dunwich Township Lot 1



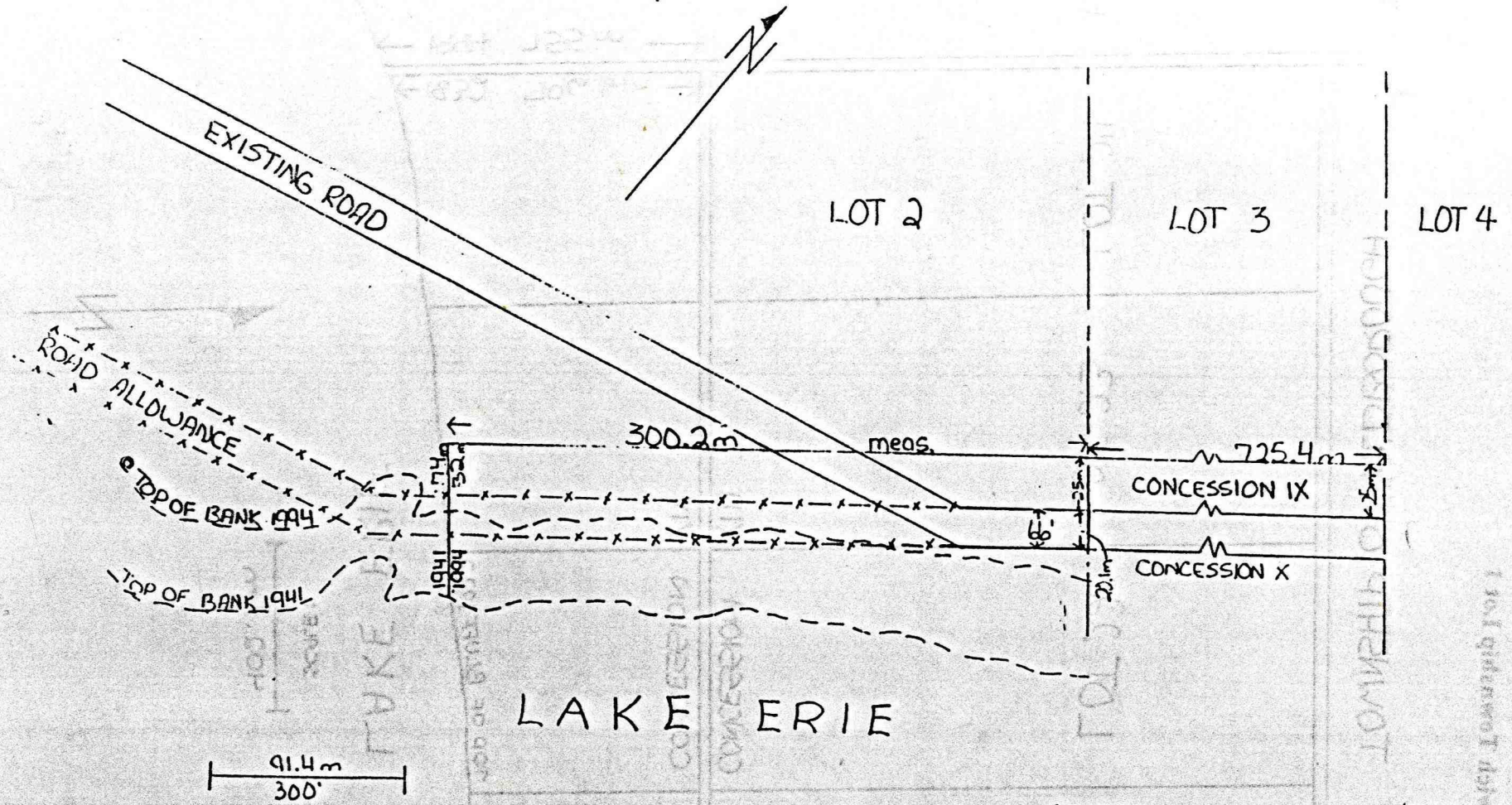
LAKE ERIE



SOURCE:  
TALBOT ROAD SURVEY  
1832

Figure 44 Dunwich Township Lot 2

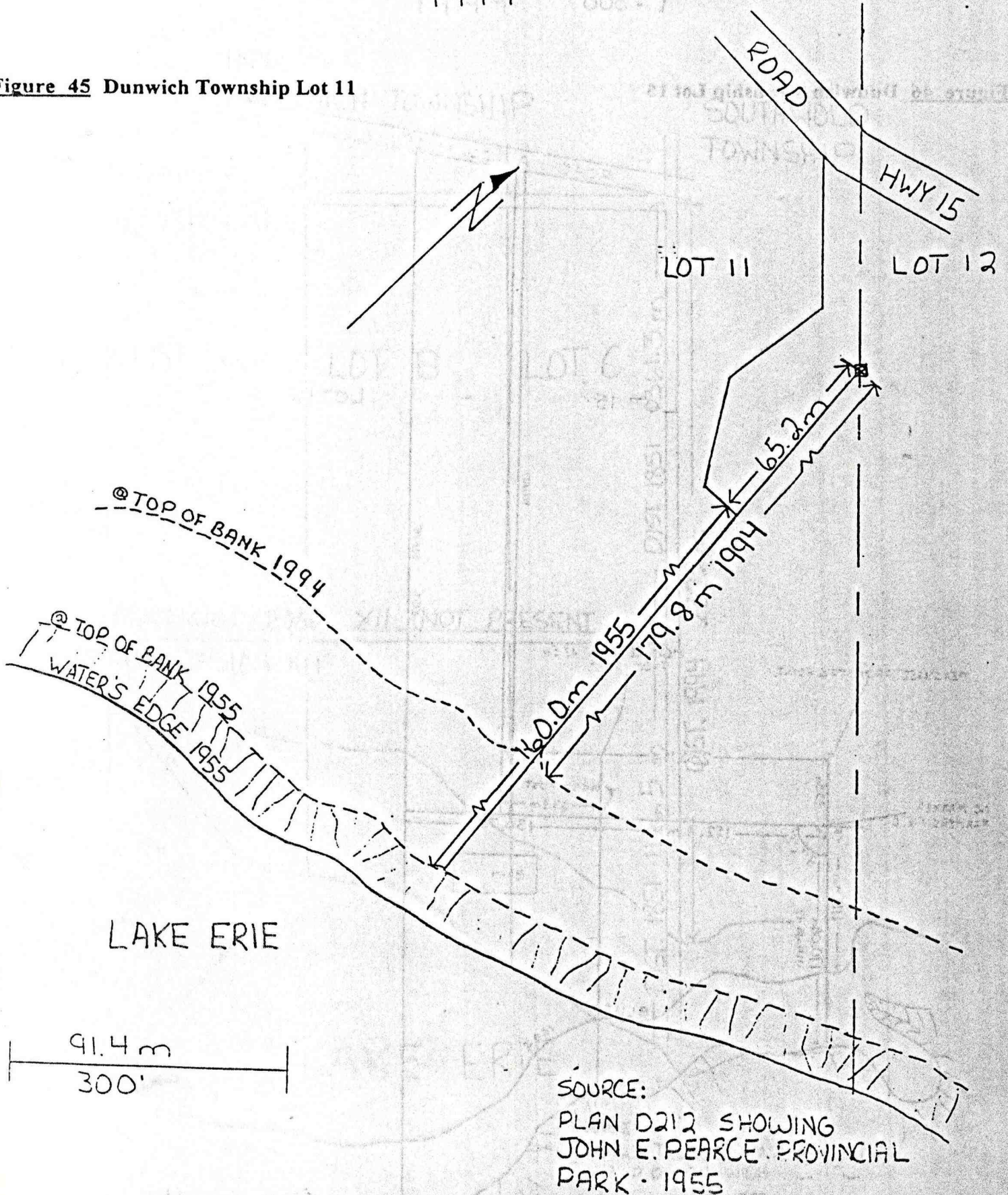
TOWNSHIP OF DUNWICH  
1994



SOURCE:  
DEPARTMENT OF TRANSPORT  
AIR SERVICES BRANCH  
FINGAL ONTARIO · 1941

TOWNSHIP OF DUNWICH  
1994

Figure 45 Dunwich Township Lot 11



PLUM POINT DUNWICH TWP.  
 CONC. 12  
 1" = 300'

SOURCE: DEPARTMENT OF TRANSPORT  
 AIR-SERVICES BRANCH  
 FINGAL, ONTARIO  
 1941

Figure 46 Dunwich Township Lot 15

