

# FAIR DISPLAY



1991

Committee -

Joan McLandress

Darlene Ford

Dorothy Robson

Marjorie Ripley

Photos taken & donated by Helen VanBrenk



Special Display  
10 souvenirs of Dutton -  
articles in honor of  
Dutton's Centennial

Committee -

Kay Waite

Louie Lackey





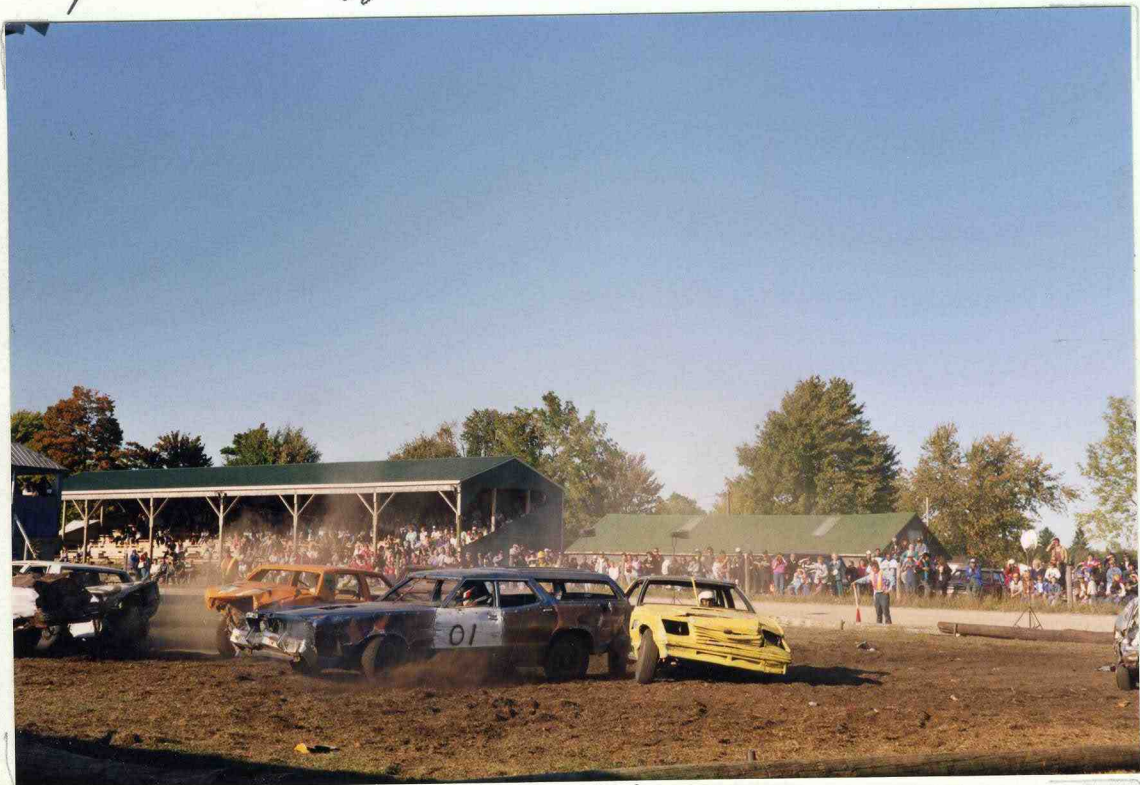
Sept. 28/91 - Georgina née Galbraith and husband of California attended the fair.



Sept. 28/91 - Official Opening of the Fair



Sept. 27 - Tammy Dumont sponsored by Wallacetown N.D. was crowned Queen of the Fair.



Sept. 29/91 - Demolition Derby sponsored by Wallacetown Optimist Club





April 20, 1991  
 Joe + Dorothea Jewell  
 celebrated their 25th Wedding  
 Anniversary with Open  
 House at Wallace town  
 Community Hall.

Those helping to serve  
 refreshments were: Darlene  
 Ford, Kay Vaite, Isobel Ripley,  
 Dorothy Robson Joan McLandress,  
 Louis Lackey, Marjorie Ripley  
 Lillian Lunn.



October 17, 1991  
 Daffodil Tea at Cowal  
 Hall from 2 to 4.30 p.m.  
 From l. to r. - Dorothea Jewell,  
 Sally M'Intyre, Helen  
 Van Buren + Dorothy Robson



From the Dutton advance  
 Wednesday January 19<sup>th</sup> 1991.  
 This was the kick-off  
 event to the Dutton  
 Centennial year.

Village of Dutton Council.

From left.  
 (1) Vincen Doran, (2) Ken Wilson, (3) LYNN M'INTYRE

(4) William Hull (Councillors) (5) Clerk, TREASURER Kim

Watson, (6) Reeve Al Kahnt. They are in period costume as they greeted guest at  
 the New Years Day Luncheon.





Members of the Adult Club.  
Are quilting at the Dutton Council  
Chambers. These ladies quilt every Monday  
afternoon from 1pm to 5pm. From left  
clockwise Jessie Cook, Lillian Lunn, Bee Oke,  
Ethel Maas, Mary Reive, Helen McLaughlin, Mae  
Graham, Florence Avery.



RECEIVES RECOGNITION - Leonard Lunn (left) received a special award from the fair board for his services to Wallacetown Fair the past 30 years as night watchman. Mike Campbell president of the board made the presentation.

SEPT. 30, 1989



District Annual - May 15, 1991



Lillian Lunn, president of Hallacetown N.S. presenting Dorothea Jewell, sec.-treas. of the District, with a corsage. Sally McIntyre is in the background.



Officers installed at District Annual

From left - Sally McIntyre, Provincial Board Director, Jean Palmer, Alternate District Director, Irene Johnston - Resolutions; Frances McCallum - Pioneer Museum Representative; Marge Cowell - Assistant Pioneer Museum Rep. Mary Lippold - Auditor; Helen Brecroft - Farm Safety Delegate; Eleanor McMillan - President; Dorothea Jewell - Secretary-Treasurer; Jeanie Leitch - 1st Vice-President; Edith Cuckland - Tweedsmuir Curator; Back row - Grace Campbell - Program Co-ordinator; Willa Johnston - 2nd Vice-Pres.



June 19, 1991.  
 Memorial tree  
 planted



Wallacetown Women's Institute planted a tree in front of South  
 Dunwich Community Hall, in memory of past president, the late Gertrude  
 Sloan. Taking part in the ceremony, members of the Institute & her family,  
 were, l to r. front row: Louie Lackey, Rev. Evelyn McLachlan, Helen  
 VanBrenk, Mae Graham, Evelyn Hathaway, Sally McIntyre & Kay Waite  
 Back row: Gladys Graham, Kay Lilley, Lillian Lunn, Dorothy Robson,  
 Dorothea Jewell, Janice Lockhart, Ma McArthur and Marjorie Ripley

77th London Area  
 Convention held  
 at Norwich Comm-  
 unity Centre - Oct. 10/91



From left - No. 6 - Mrs. Jean Palmer - Alt. Provincial Board  
 Director; No. 7 - Mrs. Eleanor McMillan - Provincial Board Director.