



Photo from Cantelon Studios around 1920? Dutton
Curling Club.

Bee house, built in 1820s, one of earliest homestead buildings

IN 1968 Gladys Elliot reported that a bee house which had been recently acquired by the Elgin County Pioneer Museum was from the estate of Stewart L. Pearce, of Wallace-town, a member of one of the earliest pioneer families of Elgin County.

The bee house was believed to be one of the earliest buildings erected on the homestead taken up by his grandfather, William Pearce, in the 1820's. It was that same William Pearce, who, as a little child, was carried up the steep hill by Col. Thomas Talbot when the Pearce, Patterson and Storey families arrived in 1809 to take up residence along the lake a few miles west of Port Talbot.

When William grew up he set up his own homestead about 1826 a

Local History **SCRAPBOOK** By WAYNE PADDON

few miles to the north of his father's near what is now Wallace-town. His bride was the former Anne Moorhouse.

The bee house was made by a travelling carpenter. Its design was Gothic and it had gingerbread moulding which was typical of that style.

The original split shingles were laid in a pattern, but it had been re-shingled and a new floor was put in

using wood from a pine tree which had been brought to the farm by the original owner.

The building, which was unpainted, was in excellent condition "sheltered for over a century by a giant hemlock tree".

The "honey house", as it was called, was filled with large empty boxes and when the bees swarmed they were brought in from the woods and was one of only two remaining pioneer bee houses in 1968.

The little house was transported to St. Thomas through the donation of funds by the Hon. Mr. Justice Moorhouse, of the Supreme Court of Ontario.

The bee house was destroyed by fire but students of Parkside Collegiate created the replica of the bee house which stands behind the Museum today.



The drawing was made by Carolyn Curtis. May 28/92 St Thomas 1968

Young map maker of Port Talbot makes history

AS A youth, Lewis Burwell lived at Port Talbot with his famous brother, Mahlon.

From his older brother he learned the art of surveying. His map sketch of Port Talbot in 1813 while the War of 1812 was going on is an invaluable local history document as well as an extremely interesting one. The map shows the location of Talbot's cabins on Lake Erie, the Talbot Creek and where the Talbot Road crossed Talbot Creek.

At the point of the creek's crossing, Talbot built the first mill in the settlement. It was burned down during the War in 1814 but was very important in the economic life of the settlement previous to its destruction. Lewis Burwell's original map is in the Canadian Archives. On the right is an adapted sketch for teaching purposes.

At the same junction of creek and road, Mahlon Burwell had his home, offices and distillery. These were also burned down in 1814 and Mahlon Burwell, Lieutenant Colonel in the Militia was taken prisoner by the Americans. His wife and presumably Lewis fled to Niagara for refuge with relatives. Sarah, her children and Lewis returned after the War but Burwell built his new home and office at the juncture of the Iona Road and the Talbot Road. A small cairn marks the later site of Mahlon Burwell's registry office on the north-west corner, which was used for many years. There is an oil painting of the old red brick office in the Elgin County Pioneer Museum.

Lewis was born in Bertie Township in

Local History SCRAPBOOK

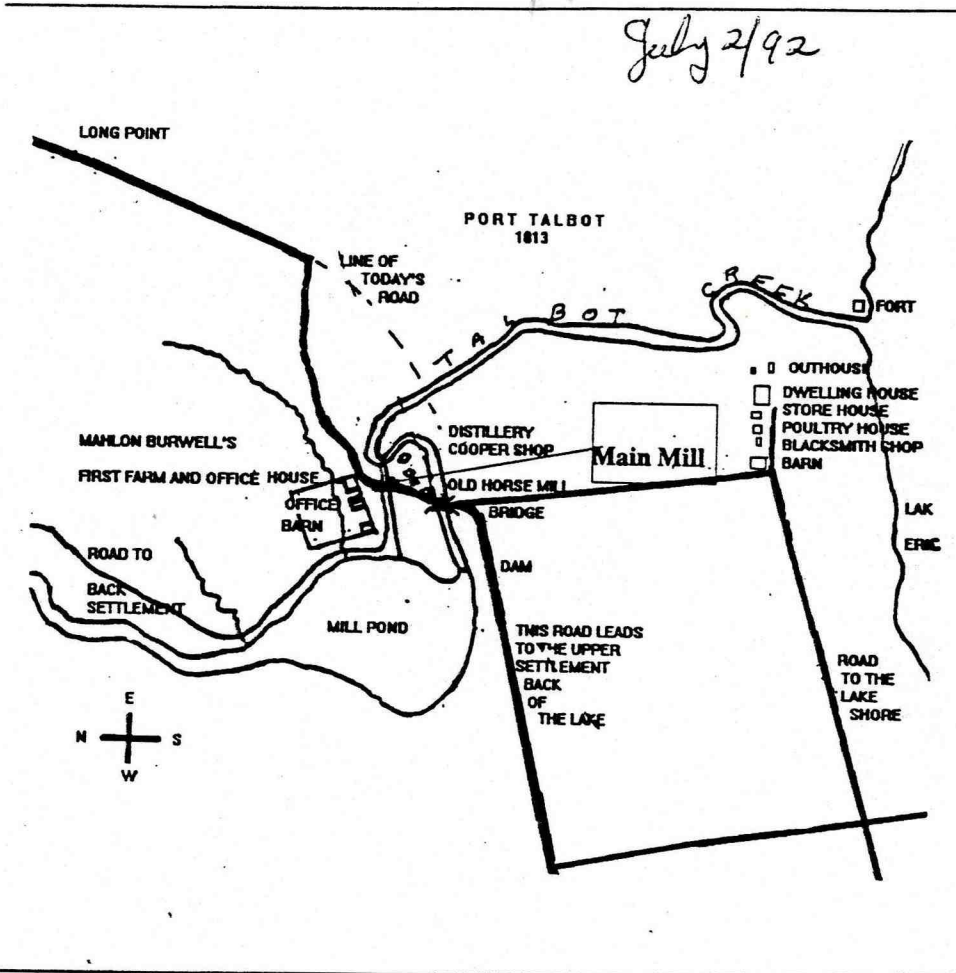
By WAYNE PADDON

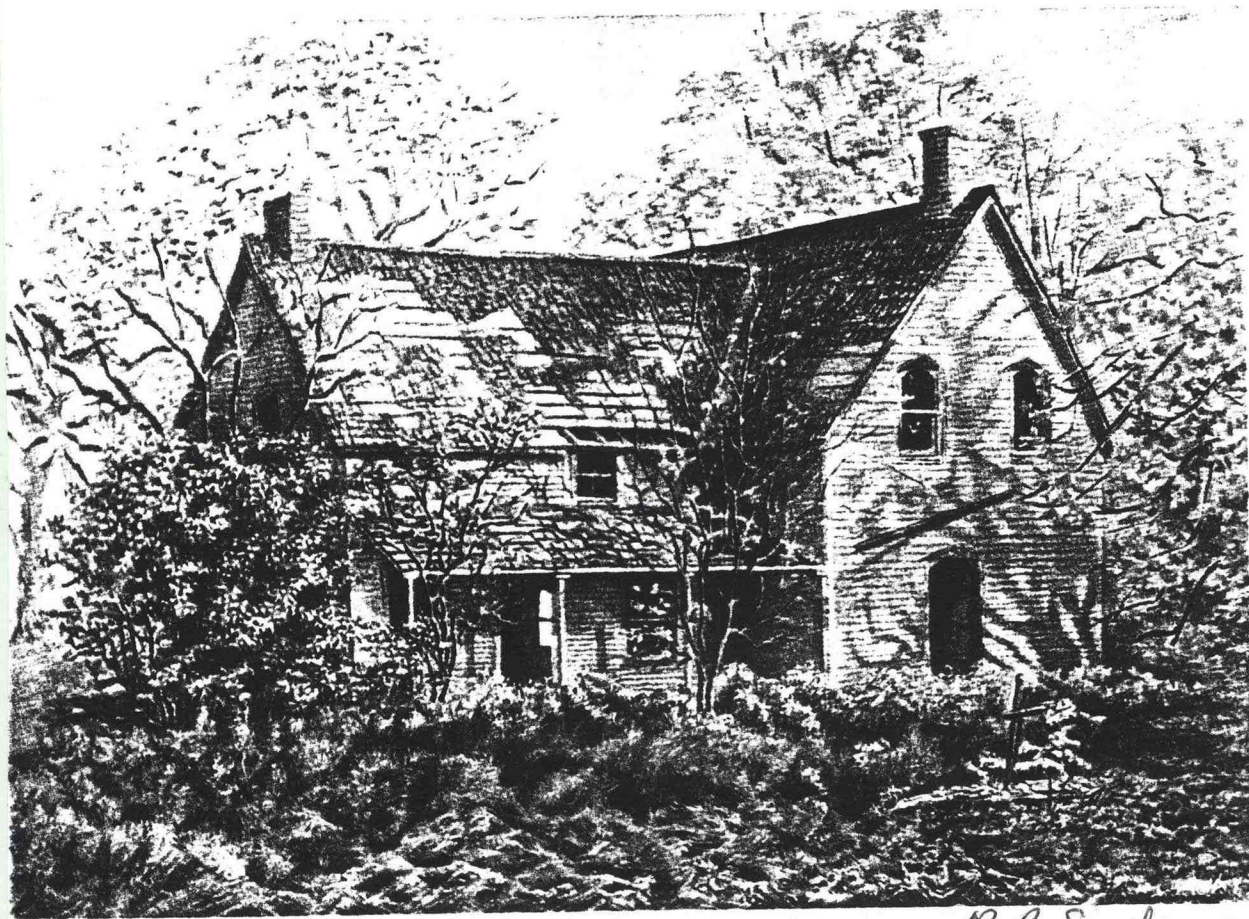
the Niagara Peninsula and his parents were Quakers. Lewis was a devout Methodist. He married Elizabeth Whitehead and they lived much of their life in Brantford where Lewis died at the age of 72 on May 17, 1865.

* * * *

Part at the bottom of the map:

Lewis has written on the original, "Map of Colonel Talbot's Farm. That which is contained within the yellow margin is the Cultivated Land-Laid down by a scale of five Chains to one inch." The map is dated, "Port Talbot, 16th June 1813" and signed "Lewis Burwell". On the left side of the map is written "Port Talbot", "My first Plan made 16th June 1813." and "This is my first attempt at mapping." "Lewis Burwell". The above is adapted from Lewis Burwell's well which is in the Archives of Canada. On the map Lewis has many years later written the comments, "This is the first plan I ever made - nearly 39 years ago."





"Happy Memories"

M. R. Sanderson/84.

Given to Hugh Breen on August 17/1985

Tracey own this house before Hugh
Breen Dad - It was sold to Hugh's
dad in 1925. Was on 9th Concession
Township of Lunenburg.



The same house as
above.

Was on the 9th

Concession lot A.

1897 - 1988

Taken down in 1988.



It was the 2nd
bridge to go up over
the years. Taken down
in 1979 and a culvert
was put in.

This bridge was on Concession 10.
Also a one way bridge.



Highland games gone
but not forgotten.
They started in
August 27th 1891. The
1st Highland games
Chief was Duncan

M'Millan. Dutton Highland games a-one-hundred
-year old tradition, have been laid to rest - due
to diminishing crowds this event will not take
place in 1991. Preserve Heritage: The Scottish
heritage of the Dutton and Dunwich Community.
By presenting the Annual Burns Night Ceilidh
every January will remain, perhaps the games will
return in the future.



This bridge was on Concession 10
a one way bridge.