

ROSS AND JUNE LUNN

This farm is located on the 10th Concession Lot 16. The land was given to Colonel Talbot on May 1st 1820 by the Crown.

Deed May 1821 Colonel Talbot to Elijah Goff - 50 acres South West 1/4.

Deed Jan.25th, 1837 - Alexander Goff to James Parker - 50 acres South West 1/4.

Deed May 5th, 1880 - James Parker owned 150 acres.

The will of James Parker 22nd April 1894 ato as therein.

Grant 3rd October 1912 Joseph Docker and wife to Andrew J. Lunn - 84 acres.

Grant 30th May 1919 Andrew J. Lunn to John Arthur Lunn.

Grant 11th April 1930 John Arthur Lunn and wife to Gordon W. Lunn.

June 1941 Gordon Lunn to Archie Lunn.

In 1948 Raymond and Jessie Lunn had the farm and raised three boys. Ross and June Lunn took over the farm in 1974 and are raising three daughters in 1993.

HOUSE - 1900 Story Backus lived it it until 1930 when Gordon Lunn put on an extension to the house.



HISTORY OF MCKILLOP (ARGYLE) FARM

This farm is located North 1/2 and South West 1/4 of Lot 14 Concession 7, Dunwich Township. The present "Argyle Farm" was first settled by McKillop's in 1851. There is an article of agreement to purchase the farm, dated October 14, 1851, between Thomas Talbot and Donald McKillop the elder. The purchase price is listed at 225 pounds. The down payment was 62 pounds, and there were 9 equal payments thereafter at 6% interest. All payments were made by August 14, 1860 at which time the land was signed over to McKillop's by George MacBeth Esq. who was managing the Colonel Talbot settlement at the time. The 1861 census of agriculture showed 60 acres (of the 150) being cultivated - 28 acres in crop and 32 acres in pasture. In that year, the family produced 100 pounds of maple syrup, 400 pounds of butter, 100 pounds of cheese, and 100 pounds of wool. They had 19 cattle, 4 horses, 36 sheep and 12 pigs. The original house was a one-storey log house. John D. McKillop, Donald's son, had the present house built in 1904. The house originally had 8 bedrooms, but in 1912 a frame kitchen was disconnected from the main house, and a bedroom and pantry were converted into the present kitchen. Another bedroom was converted into the present bathroom in the 1940's when plumbing, hydro and heating system were installed. The house and farm were passed to John D.'s son, Daniel J. who later passed them to his son John D. The farm is now owned by John D's widow, Ruth, and is operated by his sons, Ian and Alan, who along with their sister Linda, are the fifth generation of McKillop's to call this farm their home.





Denis and Janet Zettler: Farm. is
located on 11th Concession Lot number 15.



The grave of George
Crane: it is on the
Zettler Farm.

DENIS AND JANET ZETTLER

This farm is located on 11th Concession Lot 15. This land was given to Colonel Talbot on May 7, 1804 by the Crown.

Deed February 25, 1808 Colonel Talbot to William Crane - 82 acres.

Deed April 22, 1834 Colonel Talbot to William Crane - 50 acres North East 1/4.

Deed September 20, 1837 William Crane to Anthony Crane.

Deed March 17, 1842 William Crane to Anthony Crane - 50 acres North East 1/4.

The will of Colonel Talbot in December 14, 1852 all the rest of this lands to George McBeth.

Deed June 21, 1864 George McBeth to Anthony Crane - 100 acres West 1/4 and South East 1/4 of land.

Deed May 13, 1875 to 1880 Anthony Crane over 250 acres of Lot 15 - \$500.00

Anthony Crane left the land to his son Alex Crane. Alex lived out west and had the land worked by someone else. On August 15, 1919 Alex Crane sold the land to Charles and Florence Ford. They had six children: Fred, Sarah, Cliff, Allan, Gertrude and Ema. Charles and Florence left the farm to their sons Cliff and Allan. Cliff and his wife Irene and Allan had the farm in 1945. Cliff and Irene had three children: Ken, Gertrude and Elmer. Cliff and Irene sold the farm to their son Ken and his wife Valerie in 1972. Ken and Valerie sold the farm to Denis Zettler on June 30, 1976. Denis and his wife Janet and their children live on the farm in 1993 and they have corn, wheat, and soybeans. When Cliff and Irene farmed they raised turkeys and chickens for 25 years. They also had strawberries, corn, beans and wheat. They raised cattle and milking cows also.

HOUSE- The house located on the farm now was built in 1928. The house on the map of 1864 was built back by the lake. The first log cabin was built by Plum Point Fishery.

PLUM POINT

Plum Point Fisheries is located on 12th Concession Lot 15. Stuart Lindenman bought the fishery in 1940. It was closed down during the war from 1941 - 1945 because of the bombing range from the Fingal airport.

The fish were taken to the Dutton or West Lorne railway by horses and taken to New York City by train where they were sold. In 1953 Eugene and Joyce Sutton bought Lloyd Ripley's share of Plum Point Fisheries. Stuart Lindenman and his mother Mrs. William Lindenman and Art Van Loon had the other share in Plum Point also. In 1954 Stuart Lindenman sold his share to Eugene Sterling and his wife and her son John Roberts. Eugene Sutton was the working manager of the fishery from 1953 - 1965 when the fishing business ended. While Eugene Sutton managed the fishery Zavitz would pick up the fish at his home in Wallacetown and truck the fish to the Fulton market in New York. Omstead would also pick up the fish or they would be sold to Kozloff in Detroit. The setting trap net boat is still located at the fishery and the original twine house which was built in 1945. The tar nets were put on the hills to dry when the fishery was in business. The twine for the nets was purchased from Leckie in Toronto. In 1982 several evergreen trees were planted on the fishery grounds.

BUILDING- The original twinehouse built in 1945.



In Account With
Plum Point Fisheries
 WALLACETOWN, ONTARIO

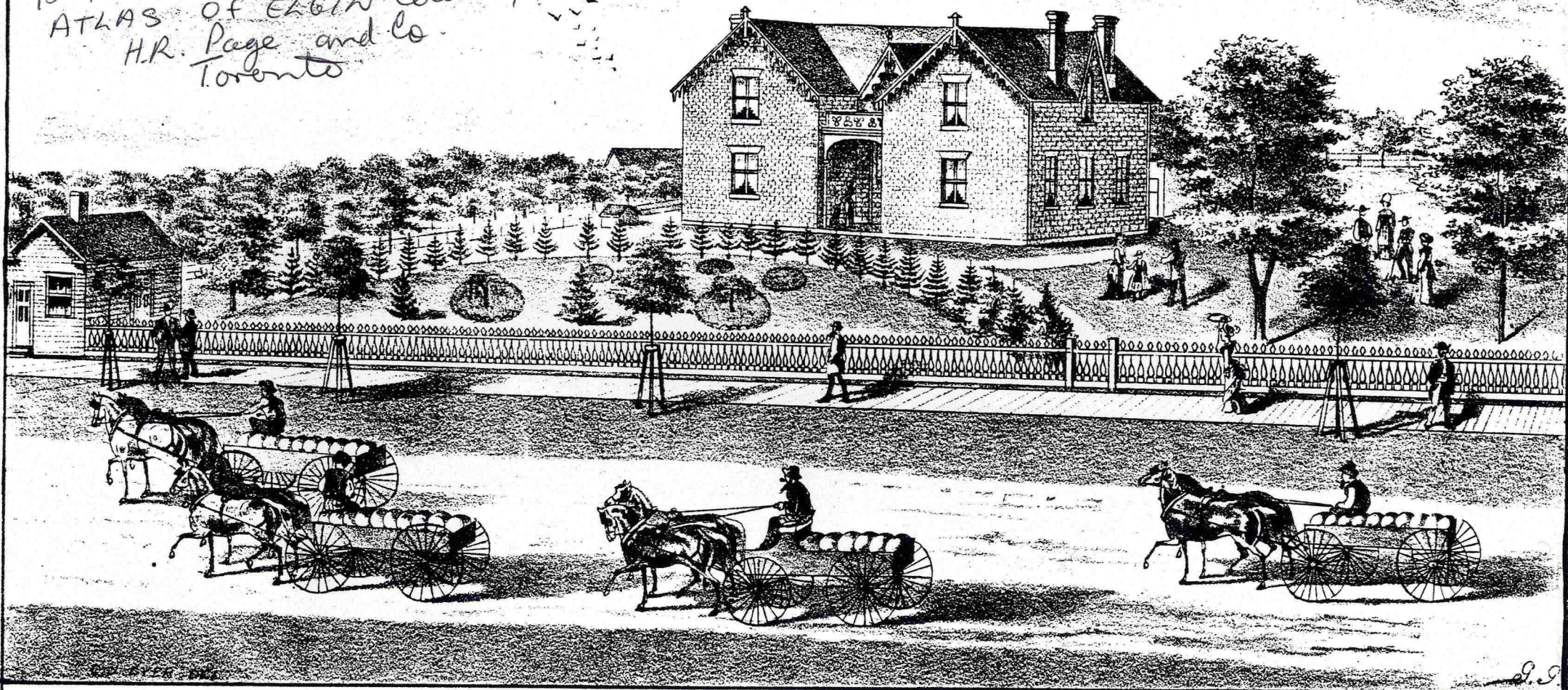
Shipped you today, via

:

			\$	c
.....lbs. Whitefish	at	c.
.....lbs. Herring	at	c.
.....lbs. Ciscoes	at	c.
.....lbs. Blue Pike	at	c.
.....lbs. Bass	at	c.
.....lbs. Sheepheads	at	c.
.....lbs. Perch	at	c.
.....lbs. No. 1 Yellows	at	c.
.....lbs. No. 2 Yellows	at	c.
.....lbs. Jumbo Yellows	at	c.
.....lbs. Carp	at	c.
.....lbs. Smelt	at	c.
.....lbs. No. 1. Smelt	at	c.
.....lbs. Suckers	at	c.
.....lbs. Catfish	at	c.

Boxes at c.

1877
ATLAS OF ELGIN COUNTY
H.R. Page and Co.
Toronto



RESIDENCE OF MEREDITH CONN.
TYRONNELL COUNTY OF ELGIN, ONT.