



A stone cairn and flag pole was donated to the Wallacetown community by the Optimist Club of Wallacetown. Pictured above taking part in the dedication ceremony are, left to right, Paul Pedersen, president of the local club; Pat Waite, fellowship chairman; Jim Carmichael, past president, West Lorne Club; John Richardson, member; Jim Ford, secretary-treasurer; Don Campbell, reeve of Dunwich Township; Doug Staddon, Lt. Governor of Zone 19 and Doug Hughes, Lt. Governor-elect.

July 1980.

1982



### Wallacetown Hall

Wallacetown Hall was built in 1946 on land given by the United Church on the south side of Highway 3 and the corner of Gordon Street. The building was moved from the Fingal Airport and put on a foundation. The brick work was done by Chris Schollenberger, and volunteer labour helped with the construction. The hall is owned by the Township of Dunwich and operated by a Board of Trustees. In 1981 the hall was insulated and aluminum windows added to help with energy costs.

B  
U  
S  
I  
N  
E  
S  
S  
E  
S  
S

1980



This B. P. service station (formerly Supertest service station) operated by Mr. and Mrs. Fred Hillis and Son for many years and then by Mr. and Mrs. Stanley Cook of Rodney for nine or ten years. In 1978 it was sold to Anthony Champion of Dutton - the old metal building was torn down and this new building erected - containing a lunch counter, garage portion and living quarters upstairs. In 1980 the service station was sold to Carol Weyermann and Joe Mairleitner from Glencoe, who operate it under the name of J. and C. Variety. The small building which was the former lunch counter was torn down, the new building was remodelled and the living quarters completed.

1980.



In 1979 the Post Office building was recovered with cream aluminum siding trimmed with brown, two large windows were installed in the front, with imitation brick below the windows and a commercial aluminum door was also added.

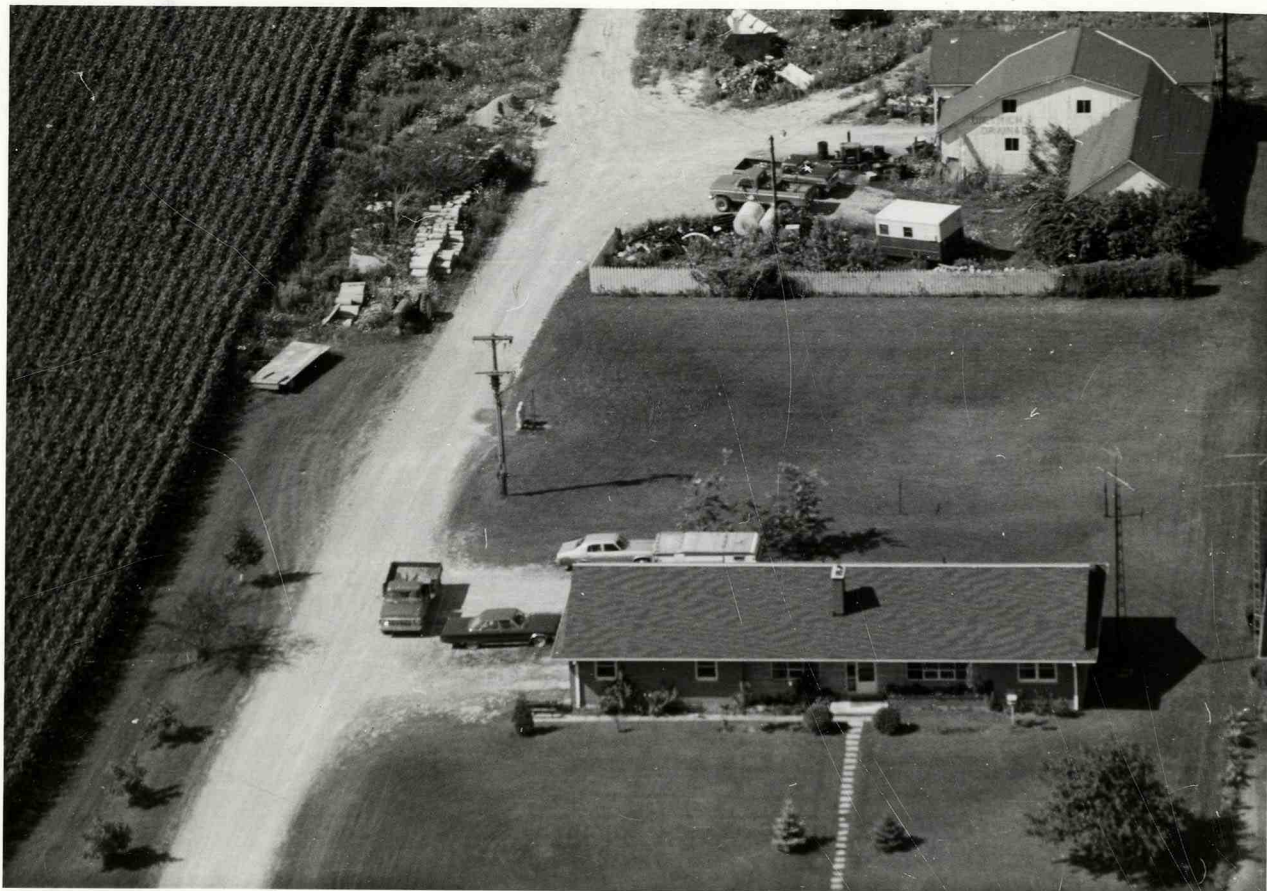
The Postmistress, Mrs. Gertrude Sloan, who also operated the store from 1961 to 1980, retired on July 5, 1980. The store was purchased by Wallace and Dorothy Pfaff of Rodney, who took possession on July 7, 1980. Mrs. Dorothy Pfaff was appointed as postmistress at that time.



MRS. DOROTHY PFAFF, Postmistress

1980 -

1981



### "Dietrich Drainage Ltd"

October 1965 William Dietrich purchased 12½ acres from Jack and Florence Lamb at Pt Lot 12, Concession 8, Dunwich Township.

During the summer of 1966 a building was purchased from Elgin County from the site of the Elgin Manor moved to Wallacetown and with two additions converted to a shop for repairing equipment.

In the spring of 1968 a house was started. August 23rd - the Dietrich family moved in.

The house consists of 3 bedrooms, living room, dining room, kitchen, 1½ baths, office and 2 car garage (upper level). Lower consists of Rec. room, bedroom, laundry, cold storage, and shower room. The house is heated by an electric furnace which converts to central air conditioning in the summer by the flick of a switch.

## Shelleys Sawmill

The Sawmill is owned by three brothers - Clarence, George and Ray Shelley. It was started in 1963 and is located on the north side of Elgin County Road 15, on the outskirts of Wallacetown on land owned by their father, William G. Shelley. The first building was of wood construction, operated by a gas powered motor. They did custom sawing for farmers and made fish boxes for fisheries at Erieau, Port Burwell and Port Dover, but in a few years this operation was phased out.

The brothers then started making pallets and built a cement block building addition to the old building and operation was now by 550 Hydro power. Tragedy struck the Shelley's on April 14, 1973 when fire destroyed 75% of their operation. They continued to do business, using a portable sawmill, with a tractor for power; ripped lumber with a rip saw and tractor and nailed pallets in the garage with a portable compressor.

They rebuilt, constructing their new building of cement walls and steel structure, powered by 550 Hydro power and heated by a four foot steel furnace, which burns wood. In 1978 an addition was built for storage, with hydro hook ups for the various machines being used.

A new storage building for their lumber was constructed in July 1980. The Shelley brothers purchase bush from farmers, then cut, skid, load and truck the logs to the Sawmill. Some logs are purchased from other loggers.

January 11, 1982, the operation is known as Shelley's Sawmill Incorporated.

TAKen 1978.



GEORGE, CLARENCE, RAY SHELLEY - OWNERS.



SHELLEY'S SAWMILL. 1981





GRANT  
AND  
LLOYD  
SHELLEY

BESIDE A  
PILE OF  
PALLETs.

OCT. 1978.



STORAGE  
BUILDING.

BUILT 1980.

1981



### Arvebo Meats

Arvebo Meats is situated on the North side of Highway 3, in Wallacetown. It was started in 1962 by Arthur Verhaege and sold to John VanOorspronk and his son Hans, in the spring of 1976. This is the retail outlet for their beef and pork products, - roasts, sausage, salami and cold cuts, also cheese products.