

Barnum's Gully School

## SCHOOL SECTION NO. 7

"The first school of the section was in the log Meeting House (after a larger Friends' Meeting House had been built near by). This was on Jonathan Doan's farm near where the Friends' Cemetery is. In this log house Merritt Palmer, the first school teacher, taught for a long time and instructed the young Friends in the rudiments of knowledge and their duty to man and God. Probably this was when the only text books used were a Spelling book, the English Reader and the Bible". (Written by F. Hunt in Globe, Sept. 1890.)

The Sparta red brick school was built several years previous to 1865. It was a one-room school, having a large attendance. Mr. Warberton taught seven years during which time the school was divided into two classrooms. Miss Dangerfield was the first teacher in the junior room. Mr. Sinclair was the next Principal. Other teachers up to 1896 were - Mr. Moore, Mr. Inglesby, (Dr.) Harry Vercoe - his nephew Mr. Grant, Miss Helen Wilson, Miss Moedinger, Miss Dora Inglesby, Miss Kelly, Miss Livingstone.

In 1908 a new red brick school was built as the old one became dilapidated. This contained two classrooms, a teacher's room with library and large hallway. One more acre of land was added to the play grounds on the east side at this time.

September 12th, 1946, the school flag was placed at half mast in remembrance of Trooper Earl Duncan Prior, a former pupil.

## SCHOOL SECTION NO. 4 - BARNUMS'

The first school was in a loghouse on the north end of Lot 23, Concession 2 - in 1840. First teacher was Delia Nickerson. She boarded around in different homes and received \$1 a week. Teachers were hired for four months at a time. Average attendance was twenty scholars. A few years later a school was built opposite the present school and a few rods south. The road leading west was a few rods north of the present school where a bridge led across Barnums' Gulley and the road ran south of the old Barnum homestead. An English church was built in 1883 at this sight, east of the bridge. This church, the school and some dwellings, formed what was called Barnums' Corners.

In 1875 Barnums' school was built on the present site. At that time it was a frame building, not being bricked over until about 1895. It used to stand farther from the road but since the widening of the Gulley, the road was moved farther east. This leaves the school quite near the road. In 1920 new seats were put in to replace former double seats. Each year the school entertains the parents at a Christmas Concert, a Hallowe'en Party and a school picnic. In January, 1947, S. S. No. 4 entered the

#### SCHOOL SECTION NO. 4 - BARNUMS' (Cont'd.)

School Area No. 1, Yarmouth. Mr. William Wood was the trustee appointed to meet with trustees in other areas of No. 1, Yarmouth.

In 1842 the Orchard Oriole, a bird seldom seen in Ontario, nested in the spruce trees in front of the schoolhouse. Directly in front of the school a deep gorge begins and runs south, growing wider as it reaches Lake Erie. Its perpendicular banks are rugged and picturesque.

In the spring of 1864 the lake road was travelled daily by soldiers stationed at the Ports Bruce and Stanley to prevent the attacks of the Ferrians who were then raiding the Canadian shores. The settlers were in a state of excitement, but no harm came to them.

The first resident in this section was a man by the name of Sagar, who, as one of the Butler Rangers, had served in the American war. When he died he was buried in the present schoolyard. His remains were afterward moved to the cemetery south of Sparta.

#### SCHOOL SECTION NO. 6

"The school section now known as No. 6 was originally two sections the southern half being No. 5 and the northern - No. 6. The first school in No. 6 was a log building erected in 1829 on Lot 24, Concession 3. Asel Bryant was the first teacher and John Wilson, Henry Yarwood and Chas. Lincoln were the first board of Trustees. Each pupil paid the teacher six shillings (75¢) for 6 mos. schooling, the pupils also supplying the wood for heating the schoolroom. The teacher "boarded 'round" but contrived to stay as long as possible in the homes where the greatest degree of comfort prevailed.

In 1842 a frame schoolhouse was built on Lot 27, Concession 3. First teacher was Miss Somers of Malahide. After a number of years a new frame schoolhouse was built on Lot 25, Concession 3. The first teacher was Mrs. Adeline Baker (later Mrs. F. Oille). A frame schoolhouse was built on Lot 26, Concession 2, in 1856. The first trustees were Thos. Dangerfield, Francis Emmett and James Dangerfield. Mr. J. P. Martyn was first teacher. Two years after the erection of this building Sections 5 and 6 were joined and the schoolhouse in No. 5 was moved to Lot 25, Concession 3, for the use of the united sections." (From Miss H. Robinson's Diary).

There were just two long benches placed next the walls used as seats and corresponding tables served as desks. This schoolhouse was condemned by A. F. Butler, Public School Inspector, in 1875 and that year a new white brick was built on the same site. The

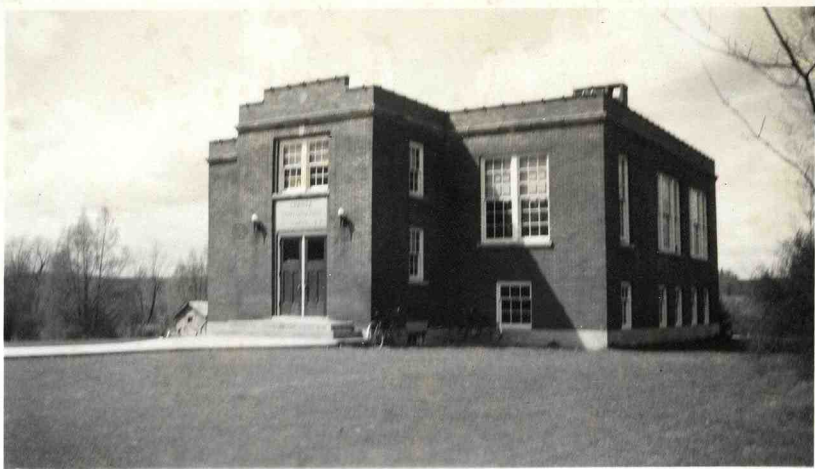
SCHOOL SECTION NO. 6 (Cont'd.)

trustees at the time of erection of this building were - Joseph Phelps, J. P. Martyn and Frank Henderson. The contract was awarded to Mr. Kilpatrick at the figure of \$880.00. Brick cost \$293. and stone \$28., remainder made up of labour, roofing and miscellaneous expenses. Teachers since No.'s 5 and 6 joined were - 1857-8 Mr. J. P. Martyn, 1859 Mr. John Flemings, 1860 Miss Marg. Turnbull, 1862-3 Miss Eliz. Oille, 1864 Miss Sarah S. Gunn, 1865 Mr. C. W. Marlatt, 1866-7 Mr. Gerrard, 1868 Miss Annie Caughill, 1869-70 Mr. H. Millar, 1871 Miss E. Comfort, 1876 Miss Livingstone, 1877 Mr. Geo. Young, 1878-9 Miss Crawford, 1880 Mr. Geo. Joyce, 1881-2 Miss Bella Sinclair, 1883-4 Miss E. Kilpatrick, 1885 Miss Flo King, 1886-7 Mr. Jesse Mills, 1888 Miss Widner, 1889-90 Miss E. Kilpatrick, 1891 Miss Etta Gillett, 1892-95 Miss S. A. Whiting.



Chestnut Grove School

Baby patented by crown	1799
F. Strasser	1868
Asa Wood	1868
David Mills	1859
Elijah Graves	1848



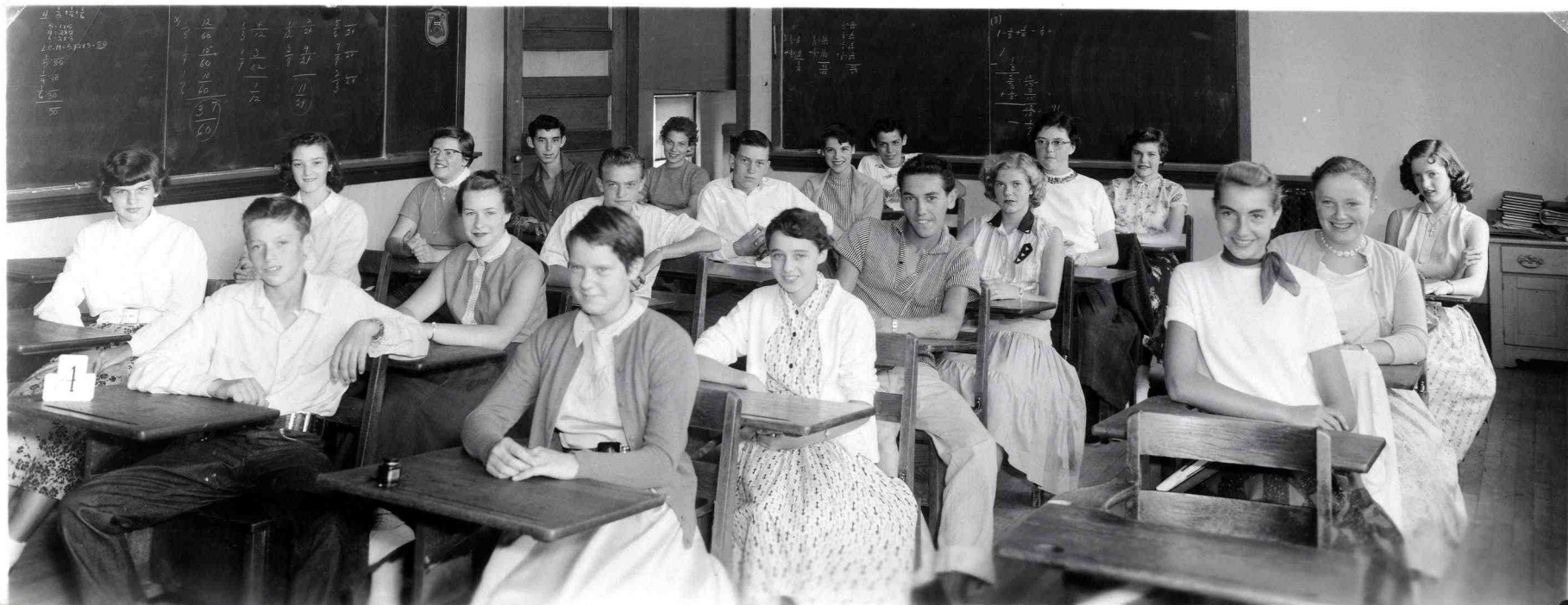
Sparta Continuation School  
Built in 1927



Continuation School Pupils  
1923-



Left to right: Father Gervais, former pupil, Mr.  
Charles Smale, trustee, Miss M<sup>c</sup>Intyre, Mr.  
Everett Bond, trustee.



Sparta Continuation Pupils

1957