

11

POEM WRITTEN BY MRS. WM. DUFTY, SR. AFTER THE INTERNATIONAL PLOWING MATCH HELD IN OCTOBER 1940	1
THE LONDON AND LAKE ERIE TRACTION COMPANY <i>(may add picture)</i>	3
OUR WAR CHAPTERS ✓	7
UNION MEMORIAL RECREATION PARK <i>(pictures)</i>	14
HISTORY OF AXFORD FAMILY ✓	17
HISTORY OF HINDLEY FARM 2	21
HISTORY OF LAWTON FARM 2	24
HISTORY OF PARKER FARM ✓	27
HISTORY OF LANNING FARM 1	29
HISTORY OF SOMERVILLE FARM ✓	31
HISTORY OF KIPP FARM <i>(pictures) big 8 + 9 +</i>	32
HISTORY OF TODD FARM ON #4 HIGHWAY/---SITE OF PSYCHIATRIC HOSPITAL <i>smaller pictures</i>	35
LIFE & TIMES OF JAMES & ELIZABETH DODD	38
HISTORY OF WEINER FARM <i>- story pictures</i>	49
HISTORY OF M. G. McLAWS FARM 1	55
HISTORY OF KING'S HIGHWAY # 4 BY MISS AGNES M. HEPBURN ✓ <i>(pictures)</i>	59
HISTORY OF DEXTER UNITED CHURCH <i>- picture</i>	76
HISTORY OF FIRST YARMOUTH BAPTIST CHURCH	79 - 82.

Poem composed by Mrs. Wm. Dufty, Sr. (formerly Nellie Pearce of Union) some time after the International Plowing Match which was held on the grounds of The Ontario Hospital on No. 4 Highway, in October, 1940.

My thoughts go back to the plowing match,
With harness shining and horses sleek,
Where men and boys were out to compete
And prove which could turn the furrows most neat.

With days so cold and nights so bleak,
With many a tent and many a leak-
And Susie late one day, with the meat
Tramping the accelerator, with both feet.

Past the Cop. with hand raised high
Commanding her to 'Stop! or Die!'
But nary a stop did Susie make-
She headed her car, straight for the gate,
Then up the 'Avenue' she flew
And handed us the red hot stew.

They came from far, they came from near-
They parked their cars- tier on tier,
They advertised every-thing from machines to a cow
And showed us how the oxen did plow.

A night crew were chosen for fear of a fuss-
It was Gramp. Ingram and Mr. and Mrs. Russ-
Why Ellen even a bath did take,
While the elements without were holding a wake.

And poor Tommy Thomas, at the head of it all,
From out of his bed, he had to crawl-
For they thought with the wind, the tents would fall
But they pulled and they pegged, and they all did work
Even to Ken. in the tail of his shirt.

But why dwell, on such things, so black-
Just think of Lee and also Jack,
How they handled that crowd and held them back-
Then one by one, they let them in
While Zella and Edna took their 'tin.'

They peeled and they pared and some of them swared-
They talked and they laughed and their troubles shared-
Then the waiters dashed down the tables long,
And tried to feed the hungry throng.

Meat, vegetables served, by the kitchen gang,
Went on the long tables with a bang-
While others cut and passed the pie,
And the rest washed dishes and piled them high.

Now the Sparta ladies did not please our boys,
One in particular, seemed quite annoyed-
And the Parson standing outside the tent,
Did hear him cuss and to his anger, give vent-
What was it all about, you say ?
Well, if you wanted to eat, you had to pay.

But later, when all was said and done,
They decided they'd all had lots of fun-
With broken backs and tired feet,
Decided it had been a wonderful meet.

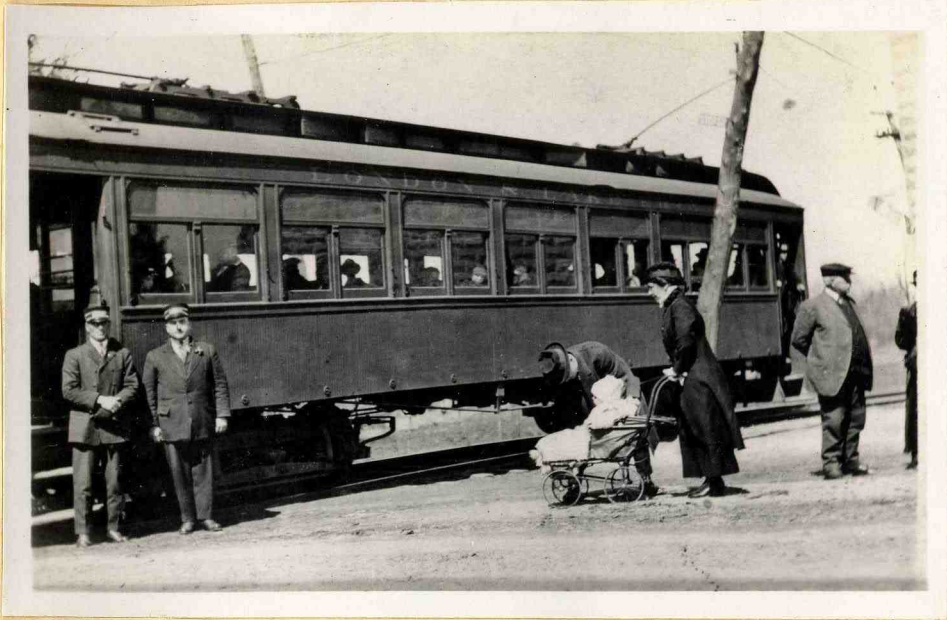


Mr. Richard Mills, walking in front of station.
Dr. Geo. H. Jackson, standing between car and station.

THE LONDON AND LAKE ERIE TRACTION COMPANY

The London & Lake Erie Traction Company, which ran from Port Stanley, through Union and St. Thomas to London, started operating in the year 1906. Mr. Richard Mills, who sold a right of way through his property for this line, was later Station Agent at their Union depot, which stood just east of the Schnekenburger Bros. garage on the Sparta Road. ^{(FIRE STATION) 924} The London & Lake Erie Traction Company had their St. Thomas depot and car barns on the site, formerly the Hutchinson House property in the west end of Talbot Street.

This road served the people of this community for several years but ceased operating and the tracks were torn up about the year 1916 soon after the London & Port Stanley Ry. was electrified. The Union station was later acquired by H. E. Johnson who used the building and yard in connection with his coal business which he conducted in Union.



From left to right-
Mr. Arthur Pearce, standing near steps of car.
Mr. and Mrs. Murray Scott and son, Don.
Mr. David Whyte.



Traction car on Union hill- picture taken by Mr. John Ellman, from roof of his home. To the left is home of Dr. Geo. H. Jackson- to north of lane is home of Mrs. B. Mc.Intyre and Dr. F. E. and Mrs. Lumley and across the street, the home of Miss. L. Montgomery.



Archie Mills when a small boy, on his bread route through the Village of Union.

We are indebted to Mrs. Richard Mills for pictures and information in regard to the operation of the Traction Line.