

made to utilize as much of the old plant as possible. This accounts for the plant having a coagulation unit so far from the filters, and at such an unusual elevation. This also gives rise to two very interesting problems in automatic water level of the water in the coagulation unit is controlled to within one and one half inches while the water on the filters flowing from the former is controlled to within five-eighths inches. This involves two applications of the Laws of Hydraulics. The consulting engineers were Gaie, Nasmith and Storrie assisted by W.C. Miller and Col. McLachlin. The filtration capacity was increased to four million gallons per day.

In 1935 the St. Thomas Water Commission and the Hydro-Electric Commission amalgamated into the Public Utilities Commission. The Hydro-Electric Commission also purchased property near the Waterworks when in 1910 they purchased a site on the original farm of Joseph Eastabrook for the Hydro Sub-station.

In 1950 another shortage of water supplies was foreseen and after some \$10,000 had been expended in test drilling operations which were unsuccessful, Commissioner P.R. Locke projected the plan of nearly doubling the water storage facilities. This project was realized in 1951-52 when approximately \$30,000 was spent in raising the dam and installing stop logs and mechanical equipment for lifting and lowering the logs.

No history of the St. Thomas Waterworks would be complete without mention of the attractive water gardens and park which surrounds the Filtration Plant, and reservoir. This beautiful spot and tourist attraction of St. Thomas, the Flower City, was converted from an unsightly willow swamp at a cost in cash to the Water Commission of \$150 and some \$75 later for shrubs. However there were many hundreds of dollars spent in labour supplied by men that owed a great deal of water bills during the depression. The Commission credited their labour on their water bills. The picnic and recreation grounds have become quite popular with the addition of outdoor fireplaces and ovens in recent years.

From a small pumping plant and thirty acres of land on the Eastabrook Flats in 1890 the St. Thomas Waterworks has grown into a modern Filtration Plant with over 600 acres of land reforested and game reserve. The supply of water is now received from the storage of the run off of a water shed of 60 square miles and is sufficient to provide a supply of water of four million gallons a day in the driest year of record. Pumping capacity is 5,600,000 gallons per day, with a second reserve of 5 million gallons in the old steam pump. After 33 years of service the gasoline engines are now inefficient and obsolete although in 1920 they were the second installation of internal combustion engines for auxiliary power for waterworks in Ontario. These are gradually being replaced by economical diesel power which was not in existence in 1920.

The history of St. Thomas waterworks will not end here as the change over to 60 cycle is fast approaching and our Public Utilities Commission is already facing the pros and cons of fluoridation of the water supply. As science progresses so will the St. Thomas Waterworks if they continue to follow the example of history.

Waterworks Engineers since the inception of a Public Waterworks are as

follows:-

Alfred Ware.....		1882
James A. Bell, M.E.I.C.	1882	1890
A.W.Campbell,M.E.I.C.	1890	1896
James A.Bell,M.E.I.C.	1896	1911
Mason Baker,M.E.I.C.	1911	1913
Mellis Ferguson,M.E.I.C.	1913	1919
W.C.Miller,M.E.I.C.	1919	1935
J.W.Peart	1935	"todate"

Consulting Engineer to the Public Utilities Commission-		
W.C.Mill,M.E.I.C.	1935	"to date"

Appreciation is expressed to W.C.Miller, City Engineer: J.W.Peart, P.U.C. Manager and Engineer, Mr. and Mrs. Norris Hathaway (my parents), for information, statistics, old documents and pictures.

Anne Hathaway Gloid

(Mrs. Donald A. Gloid).

Granddaughter of the late Albert Roberts, Water
Commissioner 1920 - 1937

Feb. 20. 1953.



filters in st. thomas plant.

The gravity and sand and gravel filters in
the Pumping Station, St. Thomas - 1950

7

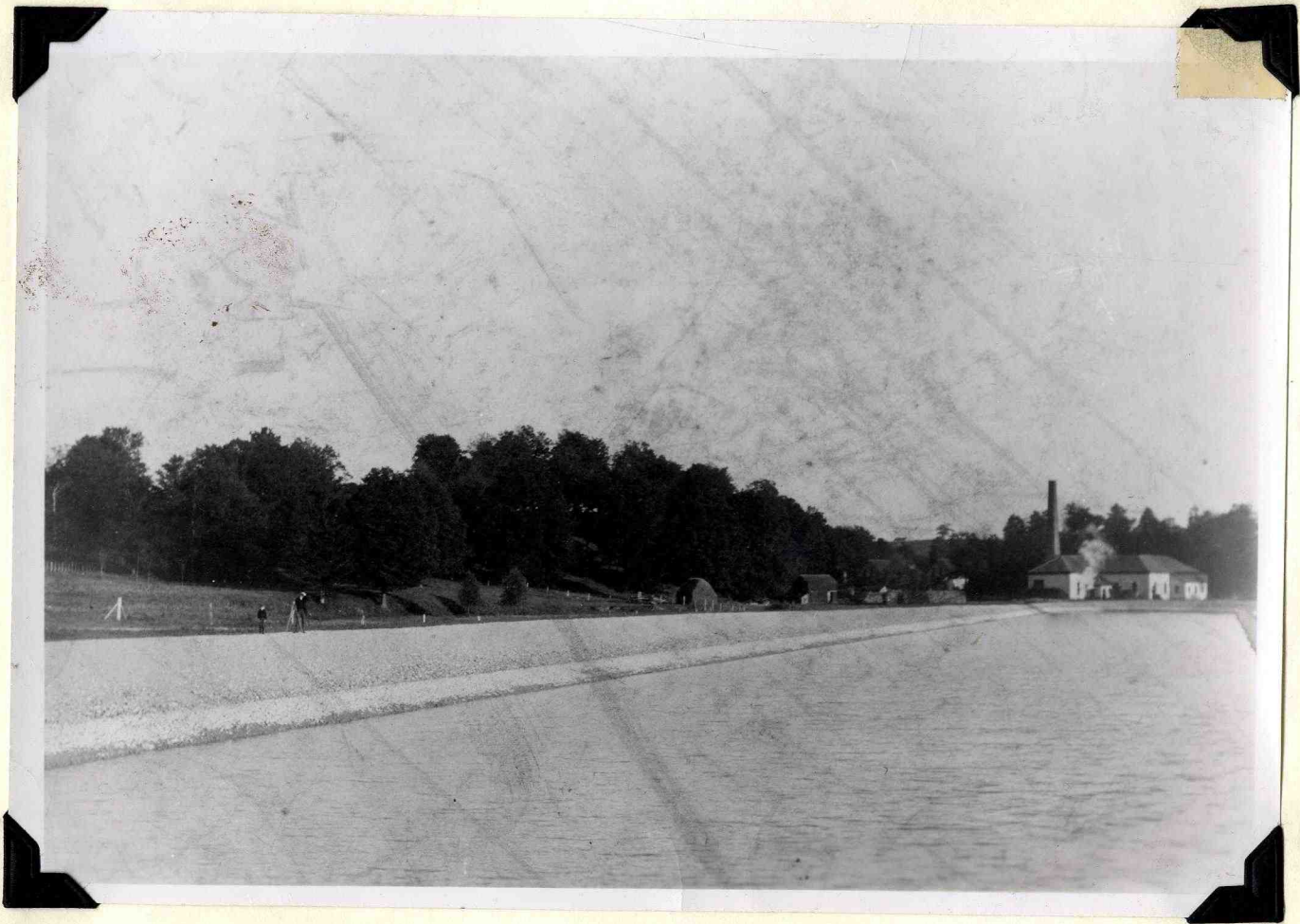
Filters in St Thomas plant



AREATION PLANT AND COAGULATION BASINS IN BACKGROUND.



THE FIRST WATERWORKS BELOW NEW STREET IN THE YEAR 1874.



FILTRATION PLANT AND RESERVOIR AFTER COMPLETION IN 1931.



STORAGE DAM AFTER REFORESTATION IN 1950



STORAGE DAM above Locke's Bridge after completion in 1921, with W.S. Lea consulting engineer, Montreal, W.C. Miller, engineer in charge and the late Albert Roberts of the Water Commission.



WATER GARDENS, WATERWORKS 1950, - THE FORMER WILLOW/SWAMP



STORE AND PARLEE HOME YARMOUTH CENTRE 1900



EAST VIEW FROM YARMOUTH CENTRE