



Ontario

1867



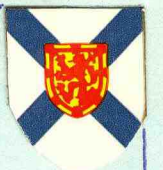
New Brunswick

1867



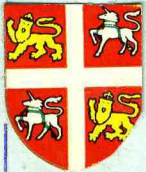
Quebec

1867



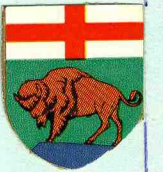
Nova Scotia

1867



Newfoundland

1949



Manitoba

1870



Alberta

1905



North West Territory

1870



Saskatchewan

1905



British Columbia

1871



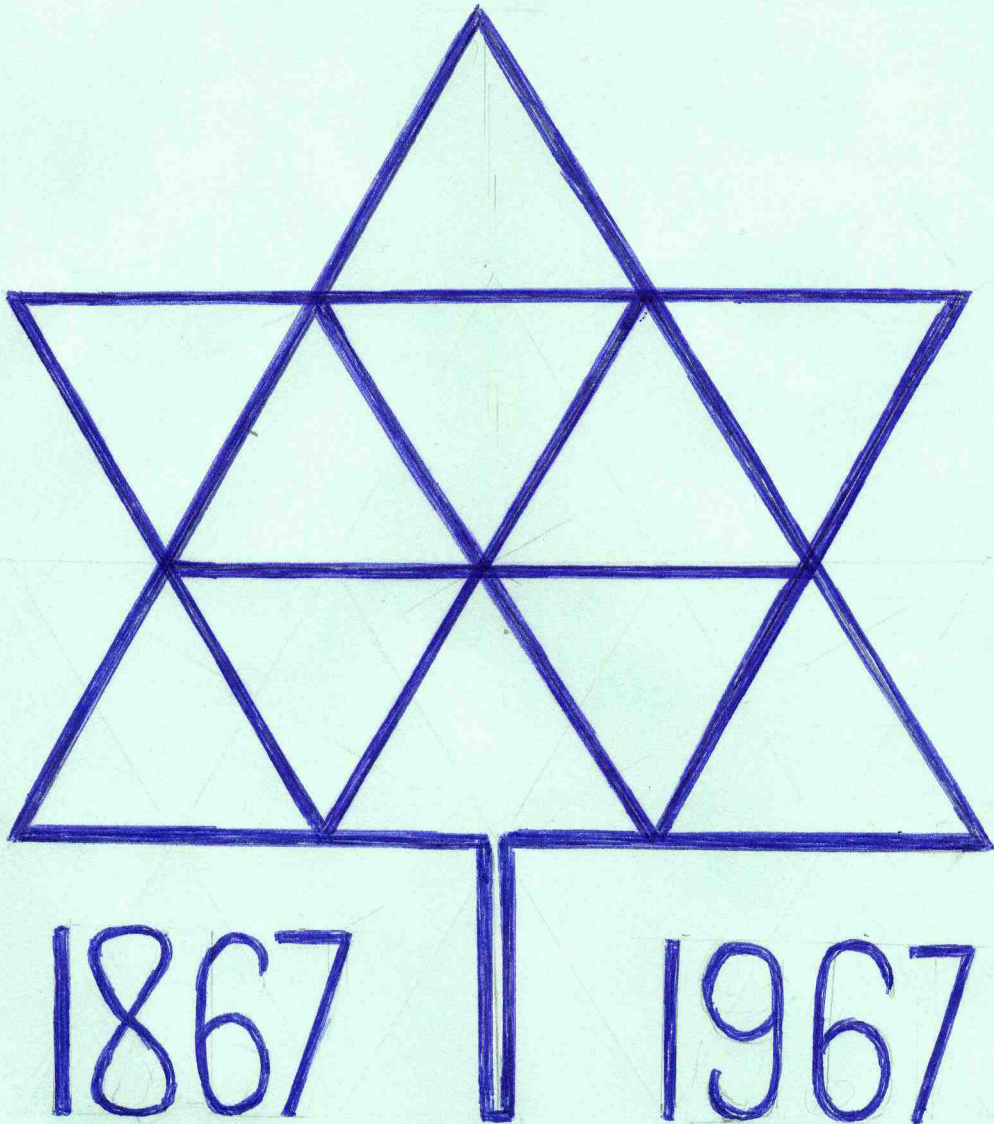
Yukon

1898



P.E.I.

1873

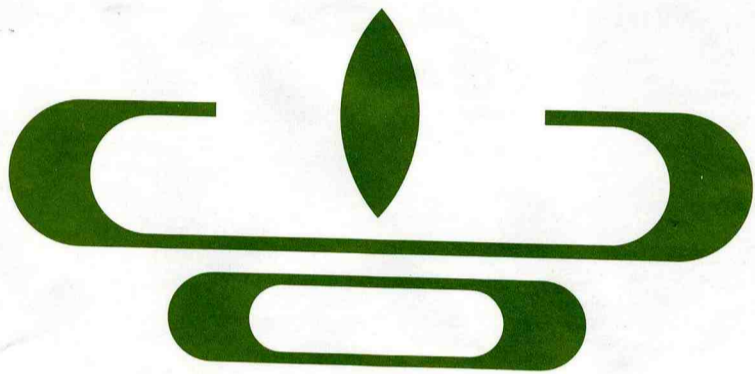


1867

1967

CANADA

Ontario Department of Education.



The use of a lamp to symbolize knowledge or wisdom goes back to ancient times. The Roman poet Lucretius used the term 'Lamp of Life' to indicate that knowledge and influence are passed on through history.

The symbol of the lamp was used extensively by the early Christians to represent the idea that thought and wisdom are guided by a supreme light. In the Bible, Christ says to his disciples: 'Let your light so shine before men that they may see your good works.' And the Book of Esdras equates a light with wisdom when it says: 'I shall light a candle of understanding in thine heart, which shall not be put out.'

The Lamp of Learning



In adopting this ancient symbol the Ontario Department of Education feels it is carrying on an honored tradition. When turned sideways, the symbol spells the letters 'OE' for Ontario Education.

Symbols through the Ages



Thoth was the Egyptian god of wisdom and learning. He holds a tablet and a writing instrument.



The owl was an ancient Greek symbol of wisdom, huge eyes accentuating enlightenment.

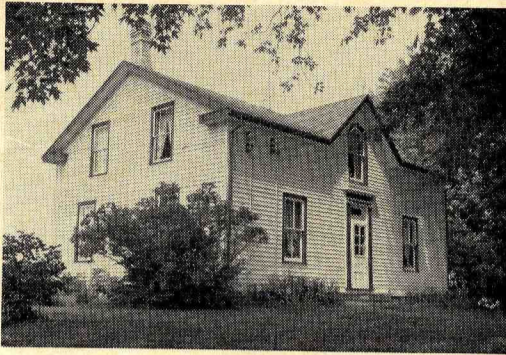


An elephant with four arms was Ganesha, Hindu god of wisdom, revered by the followers of the Veda.



Manjushri, Buddhist god of wisdom, holds a flaming sword in his right hand, providing link to lamp.

Hoodless Homestead



The Adelaide Hunter Hoodless Homestead where Adelaide Hunter, later Mrs. Hoodless was born and where she lived as a girl.



1965

Mrs. Aroti Dutt of India, newly elected President A.C.W.W., with Mrs. Leonard Trivers, President F.W.I.O., photographed at Hoodless House during Mrs. Dutt's visit to Ontario last summer. The book is a "family album" containing pictures of Mrs. Hoodless and her children.

MAP OF THE BRANCHES OF THE DISTRICT OF WEST ELGIN.

