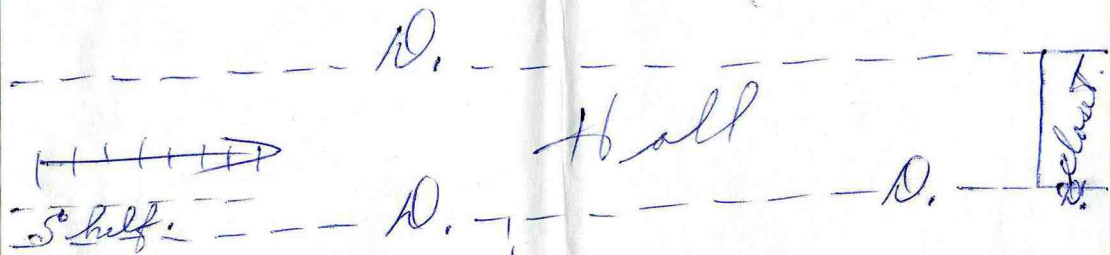


Bedroom



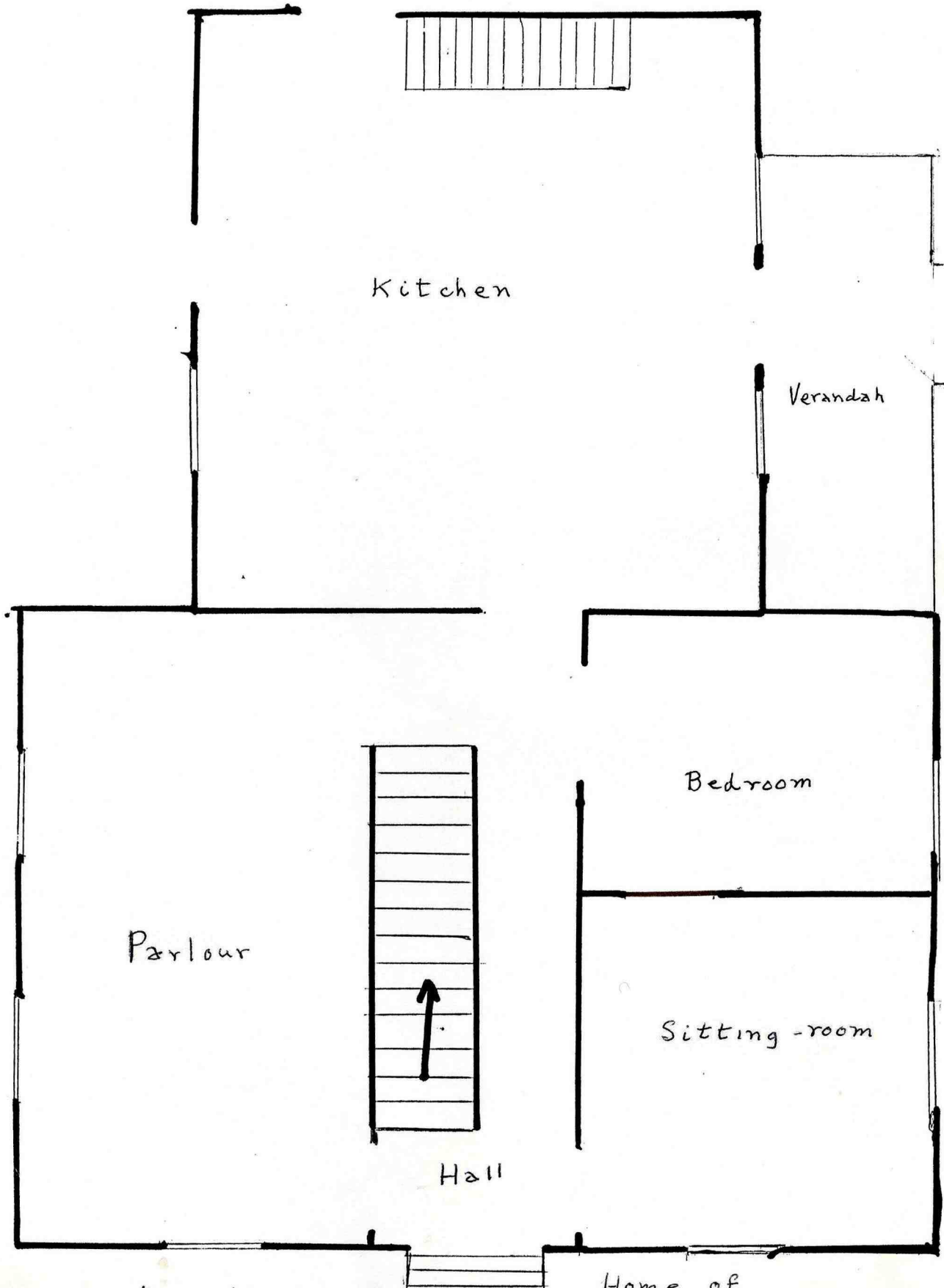
Bedroom

Bedroom

Drawn by Mary
(McColl) McAlpine
Riedl.

D.

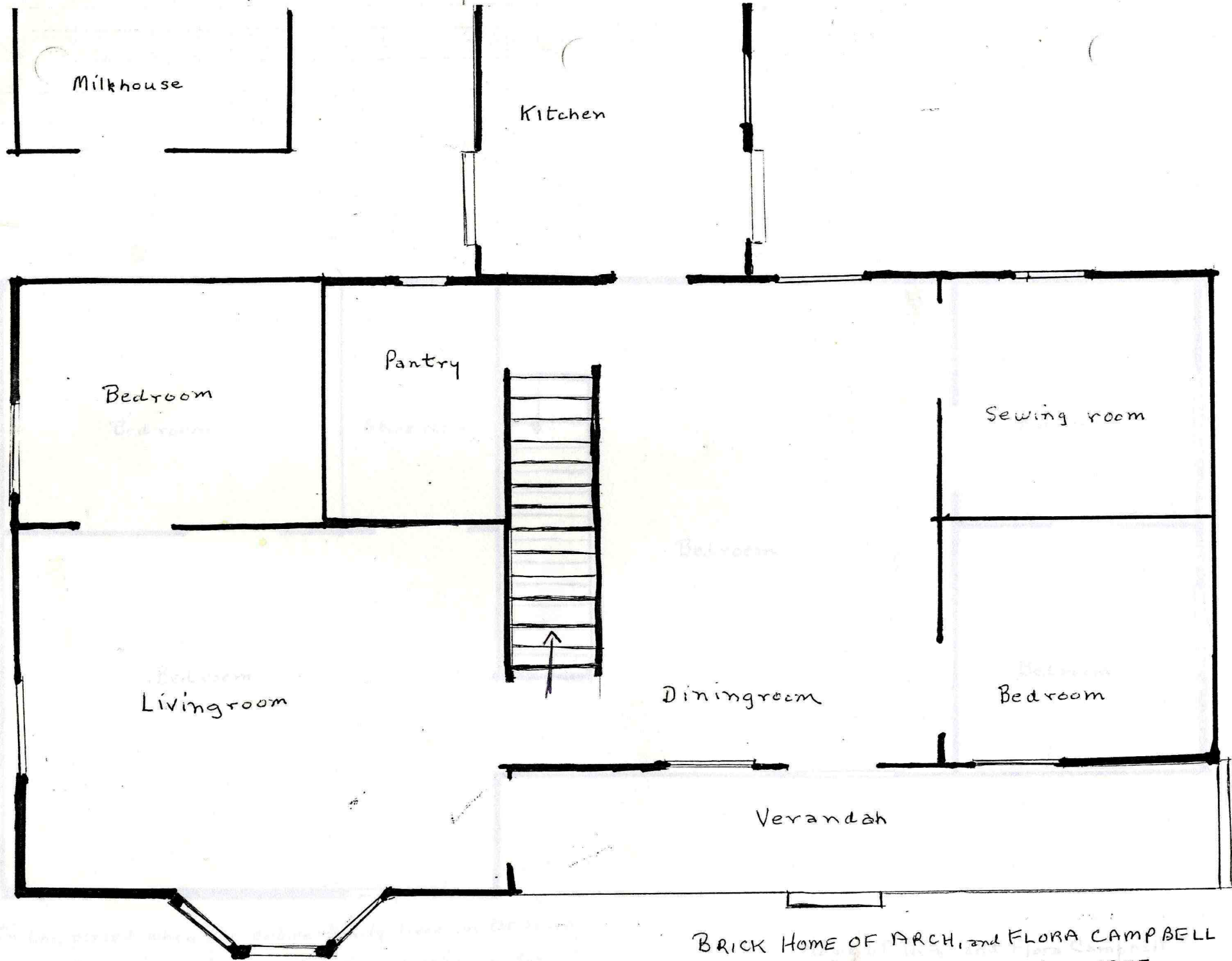
D.



Measurements estimated

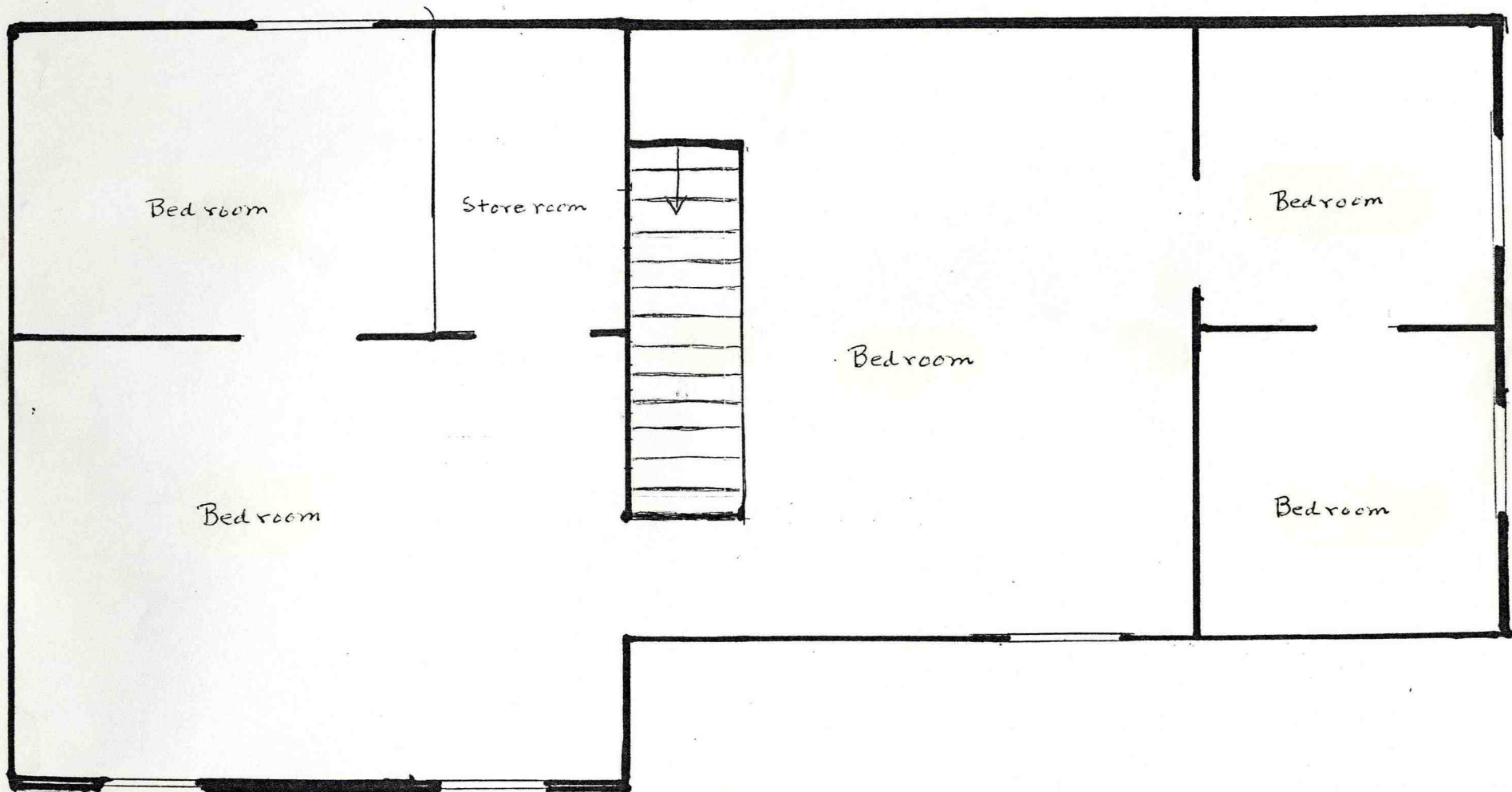
$\frac{1}{4}$ in. = 1 ft.

Home of
James and Catharine Stalker
built in period 1873-1880
on lot 22, concession 2



Kitchen was a one-storey with a woodshed behind it.
 Milkhouse was a one storey brick building with a brick floor.

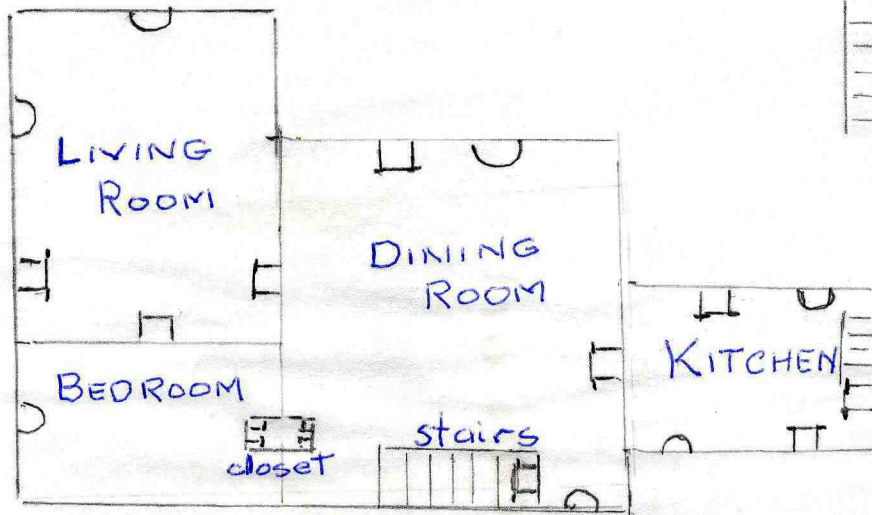
BRICK HOME OF ARCH. and FLORA CAMPBELL
 (Ground floor) Built circa 1877
 Scale $\frac{1}{4}$ in. = 1 ft. Torn down 1952
 Measurements are estimated



In the period when the entire family lived in the house, the central "bedroom" was used as a work room for quilting, spinning, etc.

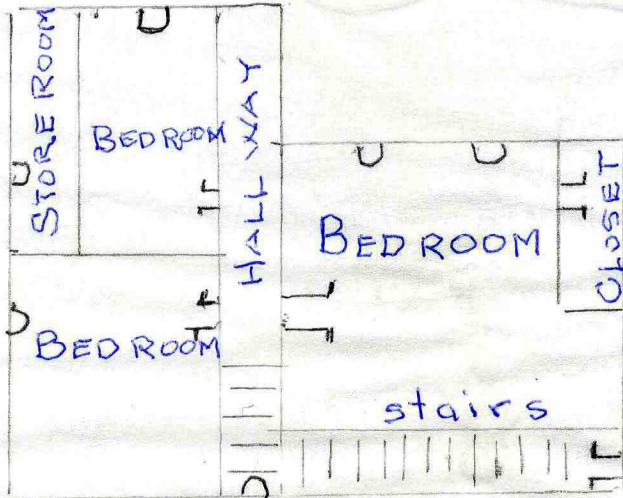
Home of Arch. and Flora Campbell
(Second floor) Built circa 1877
Scale $\frac{1}{4}$ in = 1 ft. Torn down 1952
Measurements are estimated

U window
 ∩ door
 stairs

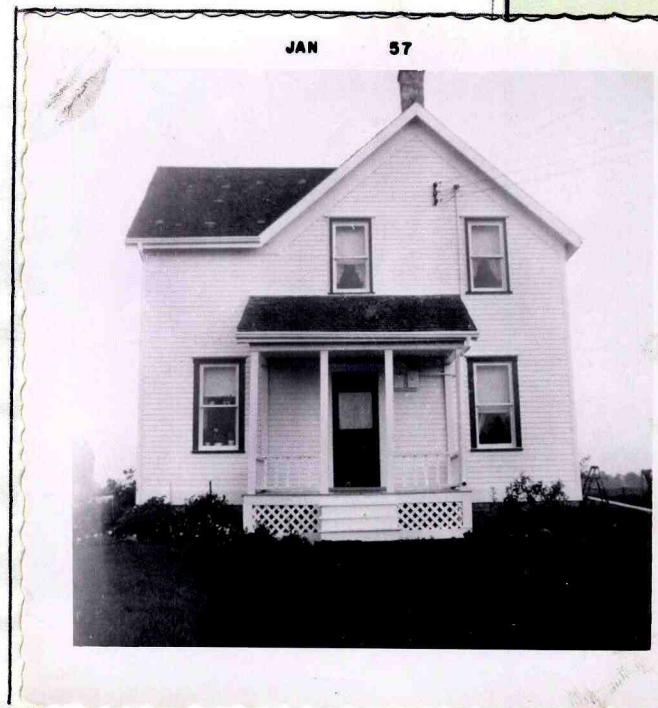


FIRST FLOOR

This house was white frame with dark green trim.

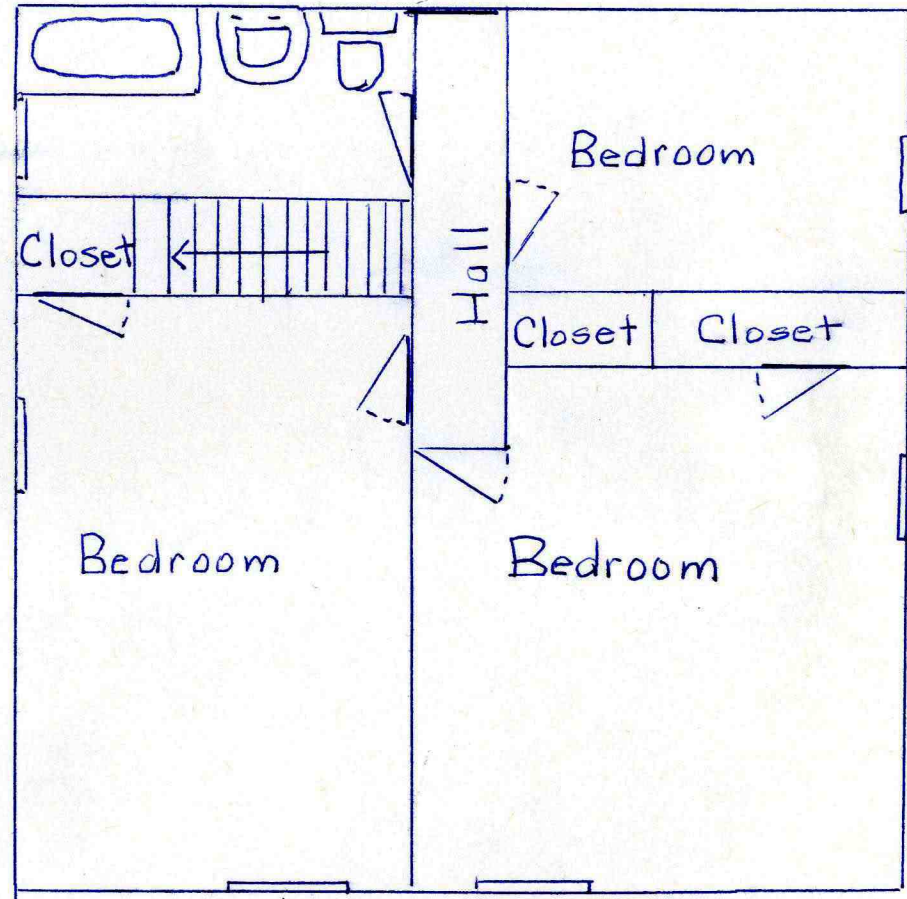
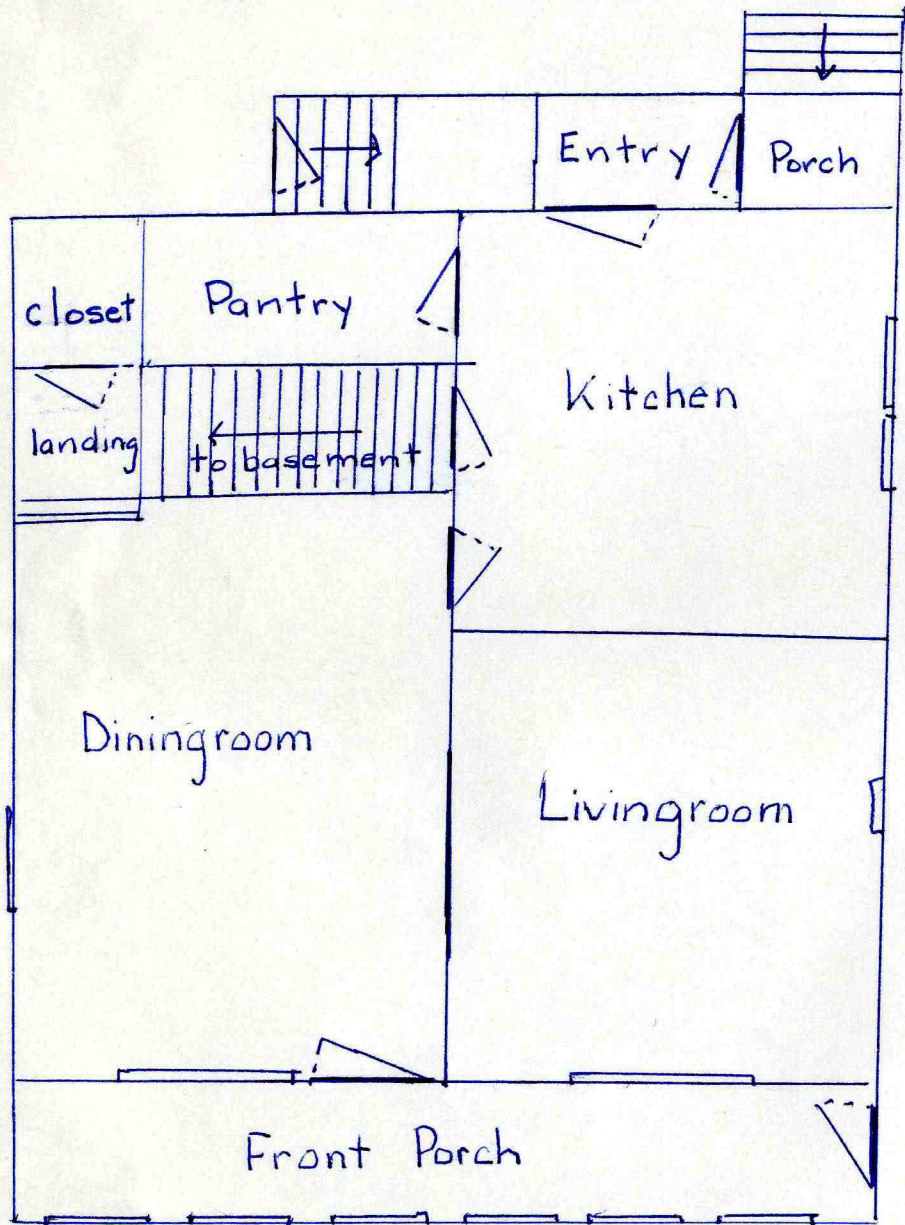


Second Floor.



Floor Plan of the house I grew up in. Ekfrid Twp. Middlesex County.

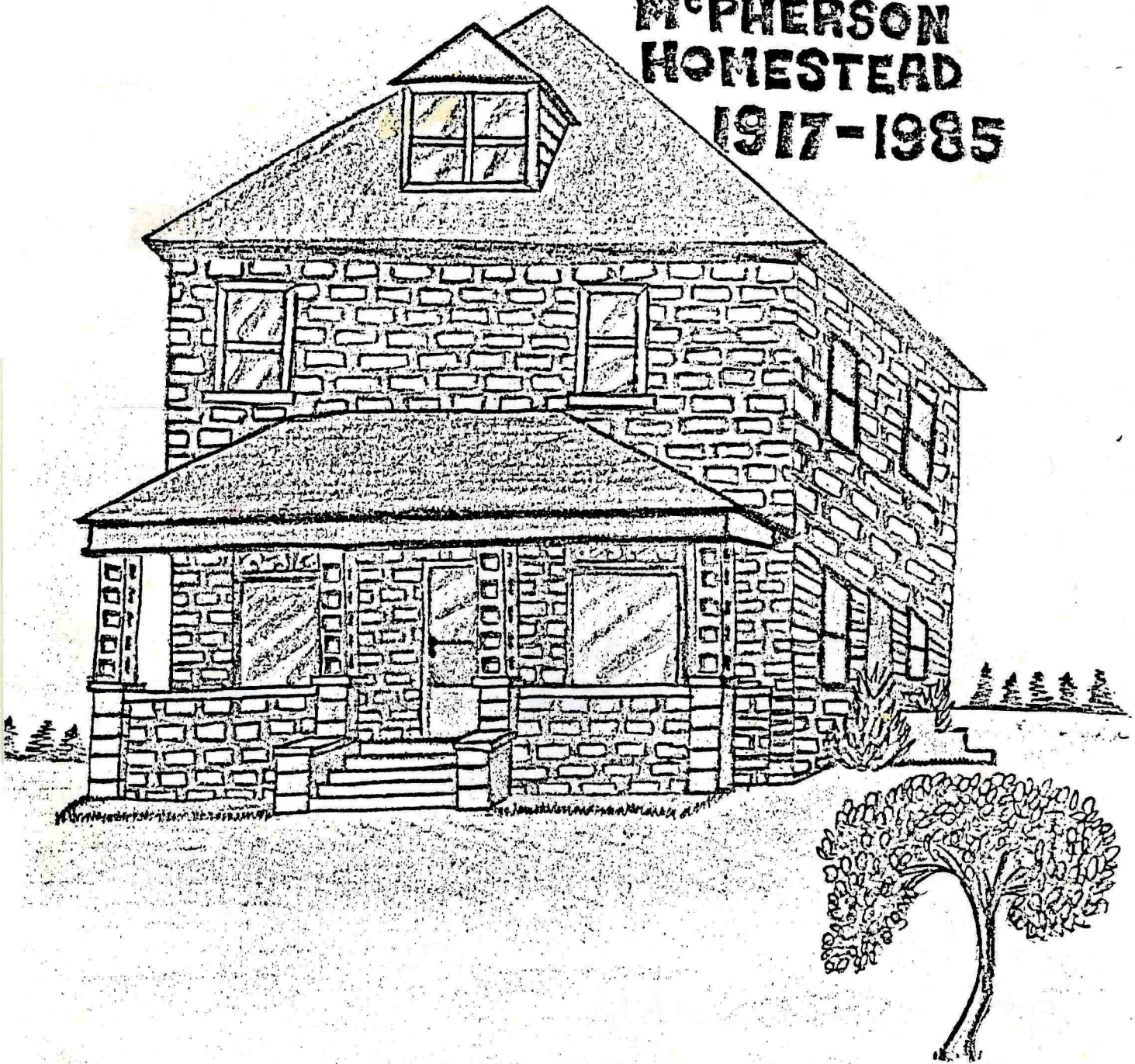
Minnie Livingstone.



Floor Plan of the Richardson home near Wallaceburg - built about 1917. It was a storey-and-a-half house, covered with white siding.

Norma McGill

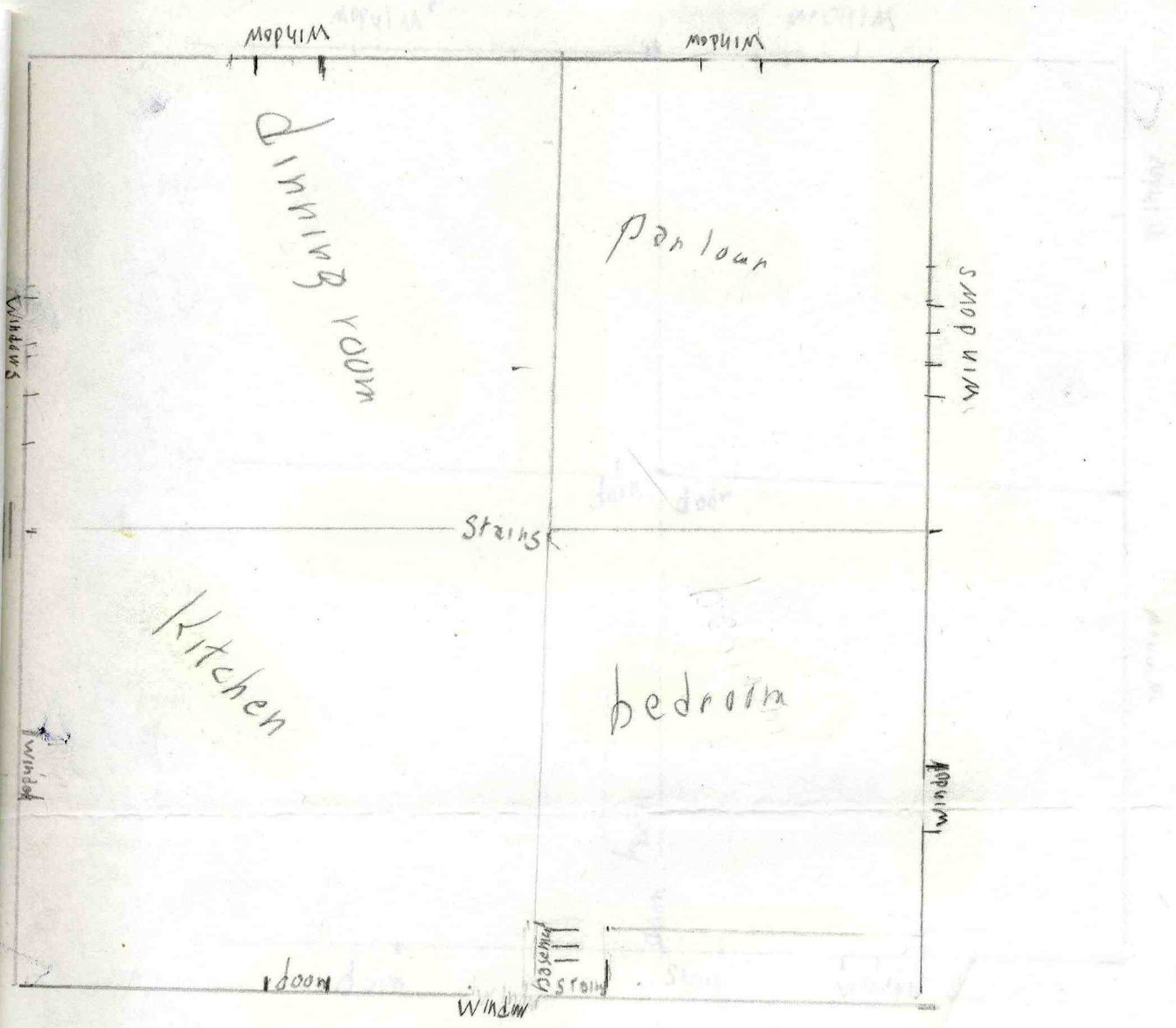
**M'PHERSON
HOMESTEAD
1917-1985**



Clair Wilkin
1988

JUNE 1989

Home Muriel Carroll grew up in.



Down Stairs.

The Home Muriel Carroll grew up in.

Aldborough Twp.

Home Muriel Carroll grew up in.