

Memorial Cairn.

Although the rain, poured down in torrents all morning at 1 o'clock, the sun shone forth and under an azure sky, and a crowd of some 1200 people, the Springfield Memorial Cairn was unveiled and dedicated on Nov. 15th 1931, by the untiring efforts of the Women's Institute.

The memorial is a cobble stone cairn on a cement platform. It is oblong in form, with a curved top.

It stands in the park and faces the north, and on that side is a granite tablet bearing the words, "In memory of the men of Springfield and South Dorchester, who fell, and in honor of those who served in the war of 1914-18."

The Elgin Regiment band, color party, D. Coy Aylmer Canadian Legion, Springfield veterans, and wreath bearers marched from the school to the park.

Reeve H. J. Taylor of Dorchester was in charge of the program. Thomas Hobbins lead the singing and Reeve Andrew Newell gave the address of welcome.

Mrs J. L. Moore Springfield and Mrs John Thompson of Mapleton, who had each lost a son, did the unveiling. Rev J. A. Davies Chaplain of the Elgin Reg. dedicated the cairn. The first wreaths were placed by D. Coy Aylmer - Major Haines

Canadian Legion - W. Farrell

Ladies Auxiliary - Mrs Rawlings

Springfield Veterans - J. A. Wharton

Women's Institute - Alfred B. Davies

Mrs W. J. Atkin

Springfield Council - Andrew Newell

Norman Charlton.

B.F. + R.M. - George Love

Stewart Black.

I. O. O. F. - and

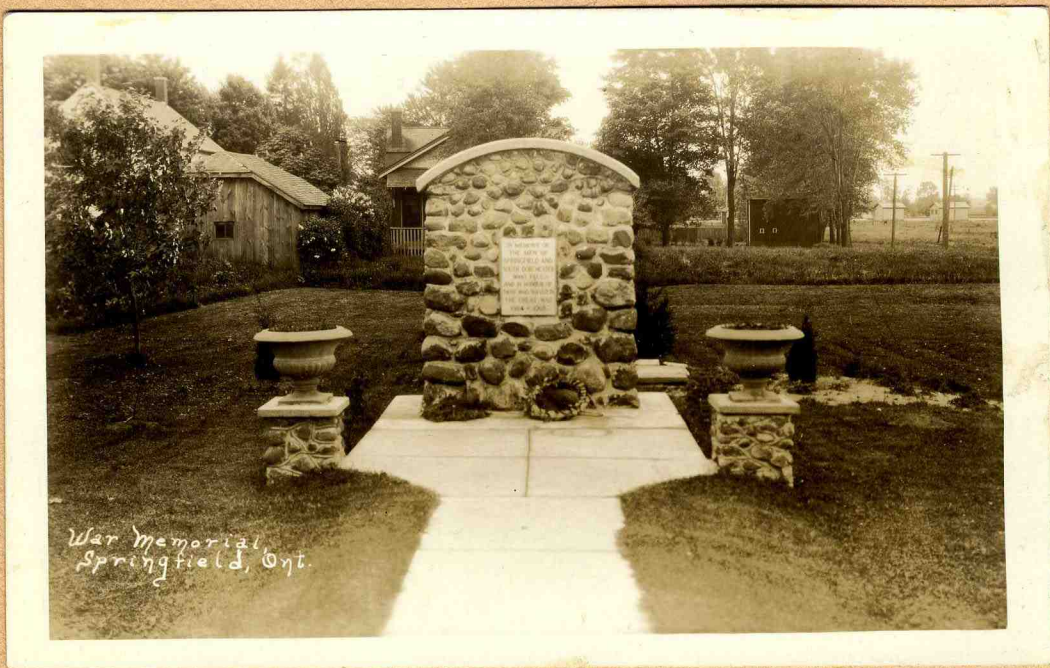
Arbless Rebekah - F. E. Martin - Mrs W. C. Athers.

Malahide Council - Gordon Newell - B. Disbrow.

Hutchinson and Peckam - W. Peckam - B. Hobbins

J. L. Moore family wreath. — J. L. Moore — Mrs. C. Vincent
M. M. Black family wreath — N. R. Martin — Stewart Black.
Dipping of Colours, Last Post, and Reveille.
Rev. George Morley recited in "Flowers Fields"
Benediction, Rev. Heil Wood. National anthem.

Honor Roll
War 1914 — 1918
Jan Lawrence
Gordon Moore
Edward Fright



War 1939 — 1945.
Clark Stafford.
Hamish Bain.



St John's United Church is a handsome red brick structure at the corner of Main and Superior St. The church was originally the spiritual home of the Methodist Episcopal congregation, which had its inception in the late thirties, as part of a circuit of thirteen charges, which included practically all of Malahide and South Dorchester, and which was ministered to by one preacher, so that church services, were a fortnight or more apart. There was no Springfield in those days. The place where the village now stands was called "Burn's Creek", and later Burnas Post Office, and it was not until 1855 that it received its name. As there was no church, the small congregation, worshipped in a log school house situated on the corner of Joel Burns farm, better known as the Yoder farm. In 1853 a new school house was built east of the village, and as the old log school house, out-grew its usefulness it was to be abandoned, and the congregation decided to build a church. The farm of the Rev Charles Pettys a retired minister was situated across the road, from the Burns farm and this fine Christian gentleman commonly known "Father Pettys" opened the way by donating a generous piece of land, on the corner of his farm