

Arnold McDowell, left, chief instructor at the rifle ranges of East Elgin Sportsmen's Association talked last season over with President Stan Sinden and Charles Phillimore who

assists at the ranges. They attended the prize giving for the junior rifle club last week.

Express staff photo.

APRIL 1973

Calton Baptist Men ¹⁹⁷³ featured in service

AYLMER — A group of 14 men, known as the Calton Baptist Men, entertained the congregation at the regular Sunday church service at the Aylmer Baptist Church April 8.

The men, from Calton, Port Burwell, Lakeview and Aylmer presented half a dozen songs during the evening service.

Those in the group are Ray Baxter, Harold Holditch, Robert Kennedy, Les Jones, Alva McQuiggan, Lawrence Mills, Peter McQuiggan, Orland Kinsey, Roger James, Stan Jones, Peter Baxter, Warren Stolton, David Stafford, and ^{Brian} Barry Kinsey. Mrs.

Ruth Baxter accompanied the group at the piano.

Following Rev. Gordon Woodcock's message, a lunch was served by the ladies of the church and Maurice James thanked the men for their songs.



STUDENTS' Council '73 - '74 — Students elected to serve as the executive on the students' council at East Elgin Secondary School in Aylmer during the next school year are pictured above. Front row, left to right, Donna Zimmer, president of the Girls Athletic Society; Nancy Broer, Students' council secretary; Donna Graves, trea-

surer and Joanne Vermey, vice-president of the G. A. S. Rear, left to right, Jeff Guttman, students' council vice-president; Stephen Leacock, president and brothers Jim and Jeff Robinson, president and vice-president respectively of the Boys' Athletic Society. (T.-J. Aylmer Bureau Photo).

MAY 1973

Board wants to keep Bayham

The Elgin County Board of Education supports a Bayham Township request that it continue to be included in the Elgin County jurisdiction, and not transferred to the Oxford Region as is suggested in a study conducted by Oxford.

Bayham conducted its own survey and found that most of the residents preferred to stay with Elgin County and asked that the county boards of education support its request to the provincial government.

This request, with the board approval, will now go to the Ontario government for its consideration.

Elgin to oppose suggested region

Members of Elgin County Council backed three east Elgin Municipalities, Wednesday, in their arguments against becoming part of a proposed Oxford Area Region. One of the proposals con-

tained in a recently-announced Oxford area study included amalgamation with Bayham Township and the villages of Vienna and Port Burwell.

A resolution from Bayham Township calling upon the

provincial minister of Treasury, Economics and Intergovernmental Affairs to ignore those particular proposals was endorsed by council. On Tuesday, the same resolution was also endorsed by both county boards of education.

Copies of the Bayham resolution and the local endorsements will now be sent to Queen's Park and to Elgin MPP Ronald K. McNeil.

The Reeves of the concerned municipalities have all said that they want to remain part of Elgin.

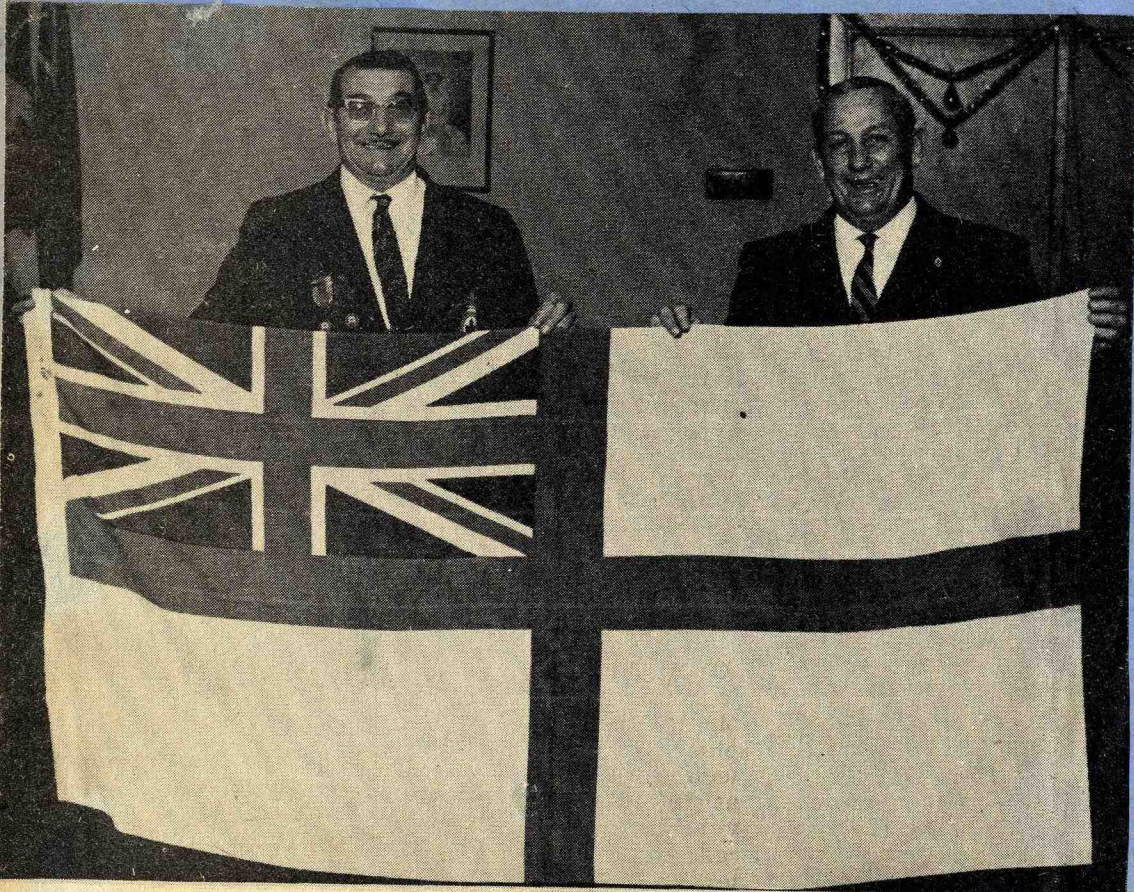
J. L. Dennis, reeve of Bayham Township says that "we want to keep Elgin as a unit as we won't leave this county."

"We conducted a survey of our own last year and our people also wish to remain in the county," he stated.

Vienna Reeve K. C. Emerson says that his community has a vested interest in the county.

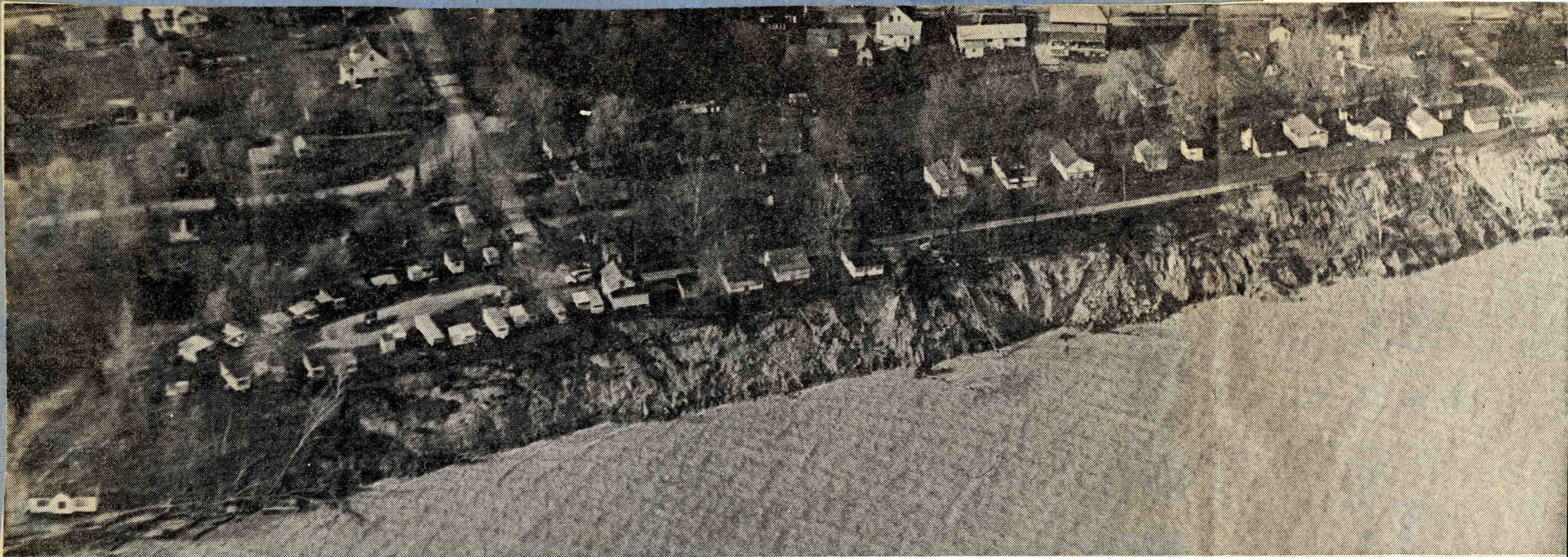
"We've been paying towards county roads systems and so on for 120 years and we want to continue in this county," he said.

Charles Bates, reeve of Port Burwell since last December, said recently that although he is new to the job, he is convinced that his village has no desire to become part of a new area.



Graham (Bud) Phillips, left, presented this genuine Royal Canadian Navy White Ensign to Branch 524, Royal Canadian Legion, Port Burwell, on Saturday night. The flag was entrusted to president Nate Hayward, right, who is the Branch's senior retired naval man. Members of Branch 524 served under the White Ensign in World War II. This fine linen flag will be carried by the color party in future ceremonies. The presentation was made during a supper for the Legion members, the women's auxiliary members, and their families. Reeve of Port Burwell Charles Bates and the ex-reeve Mary Blythe attended the dinner. A dance followed later in the evening.

FEB. 1973



HOMES THREATENED — This aerial photo of the eastern end of the village of Port Burwell, clearly shows the erosion that is rapidly eating away

bluffs along the entire lakefront. The erosion is an especially serious problem at Port Burwell, where the owners of cottages and mobile homes on

Beach Lane may be forced to move them or have them fall into the lake (Aerial Photo by Stollery).