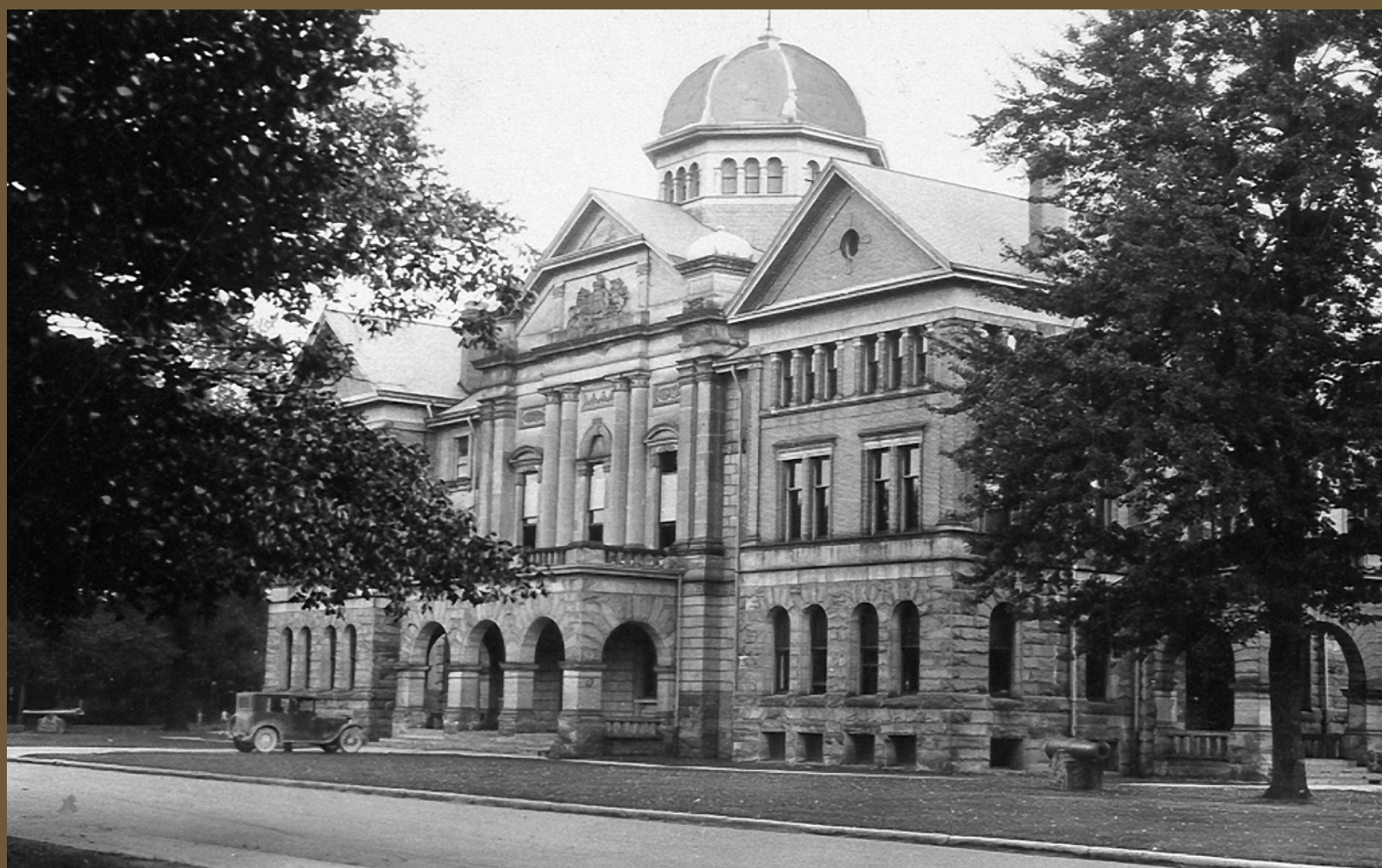




# Elgin County Council and Officials 1930



**D. K. ANDREW**, Reeve, Aldborough (Warden) ; **N. A. McCOLL**, Deputy Reeve, Aldborough ; **D. M. LEITCH**, Reeve, West Lorne ; **W. TOLMIE**, Reeve, Rodney ; **M. A. McALPINE**, Reeve, Dunwich ; **R. CAMPBELL**, Deputy Reeve, Dunwich ; **S. C. KIRKLAND**, Reeve, Dutton ; **F. COUTTS**, Reeve, Southwold ; **S. A. BROWN**, Deputy Reeve, Southwold ; **W. A. BUTLER**, Reeve, Yarmouth ; **H. L. LAWTON**, Deputy Reeve, Yarmouth ; **M. W. PADDON**, Deputy Reeve, Yarmouth ; **N. S. CORNELL**, Reeve, Port Stanley ; **E. E. DRYSDALE**, Reeve, Malahide ; **S. D. McCONNELL**, Deputy Reeve, Malahide ; **O. McKENNEY**, Reeve, Aylmer ; **R. McLEAN**, Reeve, Bayham ; **C. D. COYLE**, Deputy Reeve, Bayham ; **H. G. TAYLOR**, Reeve, South Dorchester ; **A. S. NEWELL**, Reeve, Springfield ; **L. CONNOR**, Reeve, Vienna.

**K. W. McKAY**, County Clerk ; **B. B. GRAHAM**, County Treasurer.

Council photograph not available.